

**MICRO SWITCH**  
a Honeywell Division

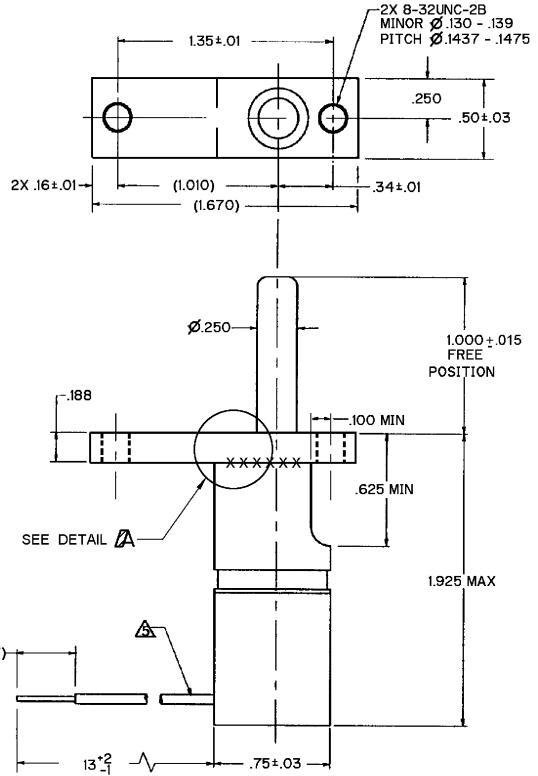
**SWITCH - ENCLOSED**

CATALOG LISTING  
**HS-1070**

FED. WFO. CODE 61929

**NOTES**

- 1 - SWITCH ASSEMBLY SHALL MEET THE REQUIREMENTS OF MS24331-1 EXCEPT AS NOTED BELOW
  - 2 - STAINLESS STEEL ENCLOSURE AND PLUNGER
  - 3 - SWITCH SEALED WATERTIGHT WITH FLUOROSILICONE O-RING USED FOR PLUNGER SEAL
  - 4 - PLASTIC MATERIAL(S) SHALL CONFORM TO MIL-M-14 OR MIL-M-24519
  - 5 - 3X NO. 20 WIRE LEAD PER MIL-W-22759/9-20 COLOR CODED: COMMON-BLUE, NORMALLY CLOSED-RED, NORMALLY OPEN-YELLOW, 0.37 STRIP LENGTHS ARE TINNED WITH 60/40 TIN/LEAD SOLDER
  - 6 - TEMPERATURE RANGE: -67°F TO +187°F (-55°C TO +85°C)
  - 7 - PRINT CIRCUIT DIAGRAM, FEDERAL MANUFACTURING CODE, CATALOG LISTING, AND DATE CODE, PERMANENTLY MARKED ON HOUSING
  - 8 - MECHANICAL LIFE: 50,000 CYCLES
  - 9 - SHOCK: MIL-STD-202, METHOD 213, TEST CONDITION 1: 100 g
  - 10 - VIBRATION: MIL-STD-202, METHOD 204, GRADE 1: 10-500 HZ
  - 11 - DESIGNED TO MEET REQUIREMENTS OF 00 - 160C:  
ICING TEST: SECTION 24 CATAGORY B  
HUMIDITY TEST: SECTION 6.3.2 CATAGORY B  
ALTITUDE: SECTION 4.6
  - 12 - BASIC QUALIFIED TO MS24547-5
  - 13 - FOR THE FIRST APPLICATION OF THE SWITCH, THE OPERATE POINT WILL OCCUR WHEN PLUNGER TRAVEL IS WITHIN THE PRETRAVEL SPECIFICATION (.040 INCH MAX).
  - 14 - THE RELEASE POINT DURING THE PLUNGER RETURN STROKE WILL DEPEND ON TOTAL PLUNGER DISPLACEMENT FROM FREE POSITION:
    1. IF THE TOTAL PLUNGER TRAVEL IS LESS THAN THE CLICK DISTANCE, THE RELEASE POINT WILL BE AT A DISTANCE EQUAL TO THE INITIAL OPERATE POINT LESS THE BASIC DIFFERENTIAL TRAVEL (TYPICALLY .020 MAX)
    2. IF THE TOTAL PLUNGER TRAVEL IS GREATER THAN THE SUM OF THE PRETRAVEL AS MEASURED IN NOTE 13 AND THE CLICK DISTANCE, THEN THE RELEASE POINT IS EQUAL TO THE TOTAL PLUNGER TRAVEL MINUS THE CLICK DISTANCE AND BASIC DIFFERENTIAL TRAVEL
- 5 2X GTAW OVERLAPPING TACK WELDS, .500 INCH IN LENGTH, NO CRACKS ALLOWED VIA VISUAL INSPECTION, MUST WITHSTAND 200 LB SEPARATION FORCE WITHOUT DAMAGE



ANSI Y14.5M-1982 APPLIES

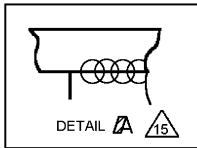
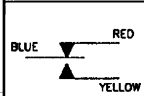
THIS DRAWING COVERS A PROPRIETARY ITEM AND IS THE PROPERTY OF MICRO SWITCH, A DIVISION OF HONEYWELL. THIS DRAWING IS NOT TO BE COPIED OR USED WITHOUT THE APPROVAL OF MICRO SWITCH

THIRD ANGLE PROJECTION

CHARACTERISTICS	ELECTRICAL DATA
PRETRAVEL ----- .040 MAX	CONTACT ARRANGEMENT <b>1X S P D T</b>
OPERATING FORCE ----- 3 - 17 LBS	<b>BASICS PER MS24547-5 (GOLD)</b>
TOTAL TRAVEL ----- .350 MIN	<b>28 VDC</b>
CLICK DISTANCE ----- .275 - .325	<b>LOAD SEA LEVEL 50,000 FT</b>
RELEASE FORCE ----- 2 LBS MIN	<b>RESISTIVE 1.0 1.0</b>
ACTION FORCE ----- 17 LBS MAX	<b>INDUCTIVE 0.5 0.5</b>
	<b>MOTOR</b>

SCALE	NONE
DO NOT SCALE PRINT	
UNLESS OTHERWISE SPECIFIED TOLERANCES ARE	
ONE PLACE	1.01 ± .030
TWO PLACE	1.00 ± .015
THREE PLACE	1.000 ± .005
ANGLES	±
WEIGHT	

**CIRCUIT DIAGRAM**



CATALOG LISTING  
**HS-1070**  
 RELEASE NO. PR-24188  
 ISSUE 5  
 REVISIONS:  
 A 201015  
 B 203632  
 C 0001086  
 D 0001086  
 E 0001086  
 F 0001086  
 G 0001086  
 H 0001086  
 I 0001086  
 J 0001086  
 K 0001086  
 L 0001086  
 M 0001086  
 N 0001086  
 O 0001086  
 P 0001086  
 Q 0001086  
 R 0001086  
 S 0001086  
 T 0001086  
 U 0001086  
 V 0001086  
 W 0001086  
 X 0001086  
 Y 0001086  
 Z 0001086  
 11 OCT 99  
 SAV  
 CHECK  
 JJA  
 11 OCT 99  
 RASTER  
 DRAFT