

64AT201 SERIES
CHART 1
 DRAWING NUMBER
 ISSUE
 REVISIONS
 A REINST 18-11672 7 NOV 82
 B 152593 10 OCT 83
 C 2004000 9 NOV 82
 D 058771 14 FEB 86
 E 2063228 28 MAR 86
 F 1072702 7 JUN 82
 J A P 13 NOV 82
 FOR BUREAU-B
 DRAWN
 CHECK
 C E D 4 NOV 82
 RELEASE NO. PR-11672
 REPLACES

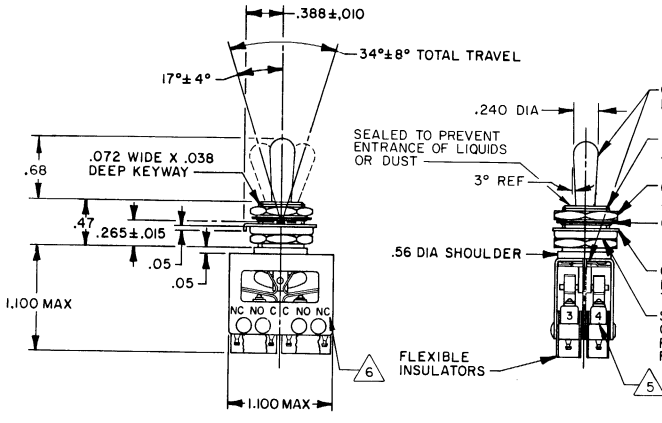
MICRO SWITCH
 FREEPORT ILLINOIS, U.S.A.
 A DIVISION OF HONEYWELL
 FED. MFG. CODE 9199

**ASSEMBLY -
TOGGLE SWITCH**

CATALOG LISTING
64AT201 SERIES
CHART 1

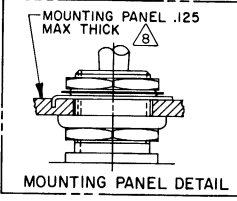
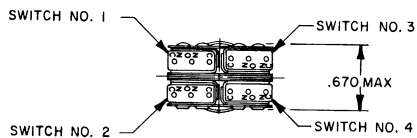
CATALOG LISTING	KEYWAY POSITION		CENTER POSITION		OPPOSITE KEYWAY POSITION	
	C-NC	C-NO	C-NC	C-NO	C-NC	C-NO
64AT201-1	1 8 2	3 8 4	ALL	NONE	3 8 4	1 8 2
64AT201-3	1 8 2	3 8 4	NONE	NONE	3 8 4	1 8 2
64AT201-5	1 8 2 *	3 8 4 *	ALL	NONE	3 8 4	1 8 2
64AT201-7	1 8 2 *	3 8 4 *	ALL	NONE	3 8 4 *	1 8 2 *
64AT201-5/4	1 8 2	3 8 4	ALL	NONE	3 8 4 *	1 8 2 *

* ASTERISK DENOTES MOMENTARY POSITION



NOTES

- 1 - UNIT INCLUDES "SX" TYPE BASIC SWITCH (4) WHICH MEETS REQUIREMENTS OF MIL-S-8805/4
- 2 - SWITCHES DO NOT NECESSARILY OPERATE SIMULTANEOUSLY
- 3 - TERMINALS ARE PLATED FOR SOLDERING
- 4 - MATTE FINISH ON LEVER AND BUSHING
- 5 - SWITCH NUMBERS STAMPED ON END OF BASIC SWITCHES
- 6 - TERMINAL DESIGNATION STAMPED ON BOTH SIDES OF UNIT
- 7 - WHEN LEVER IS MOVED OUT OF A MAINTAINED POSITION, IT WILL RETURN OF ITS OWN ACCORD TO THE ORIGINAL POSITION OR THE ADJACENT POSITION. THE TOGGLE LEVER MAY HANG UP BETWEEN THE TWO ADJACENT POSITIONS ONLY BY EXERTING CONSIDERABLE EFFORT FOR PANEL SEAL TO BE EFFECTIVE MOUNTING HOLE IN PANEL SHOULD NOT EXCEED .500 DIA
- 8 - MOUNTING PANEL .125 MAX THICK



Furnished under United States Government Contract No. _____ Shall not be either released outside the Government, or used, duplicated or disclosed in whole or in part for manufacture or procurement, without the written permission of Honeywell, a Division of Honeywell, except for: (1) emergency repair or overhaul work by or for the Government, where the item or process covered is not otherwise reasonably available to enable timely performance of the work; or (2) release to a foreign government, or the interests of the United States may require; provided that in either case the release, use, duplication or disclosure hereof shall be marked on any reproduction hereof in whole or in part.

SCALE FULL
DO NOT SCALE PRINT
TOLERANCES
DESIGN UNITS
WEIGHT .07 LB APPROX

CHARACTERISTICS	ELECTRICAL DATA
	CONTACT ARRANGEMENT S P D T (4)

LOAD	ELECTRICAL RATINGS		
	SEA LEVEL	50,000 FT	
RESISTIVE	28 Vdc	115 Vac, 60 Hz	28 Vdc
	(AMPERES)	(AMPERES)	(AMPERES)
INDUCTIVE	7	7	4
	4	7	2.5