

23AT74-T2-D
PAGE 1 OF 1

REVISIONS

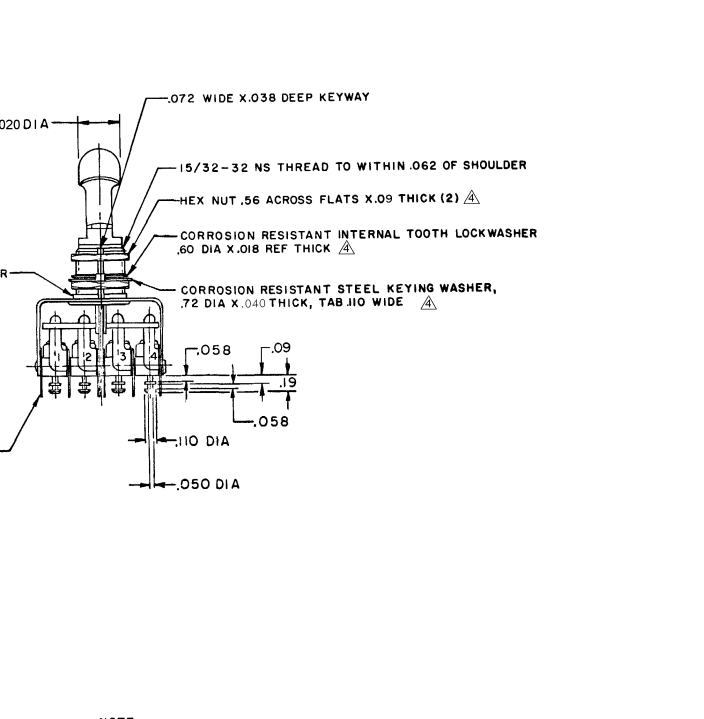
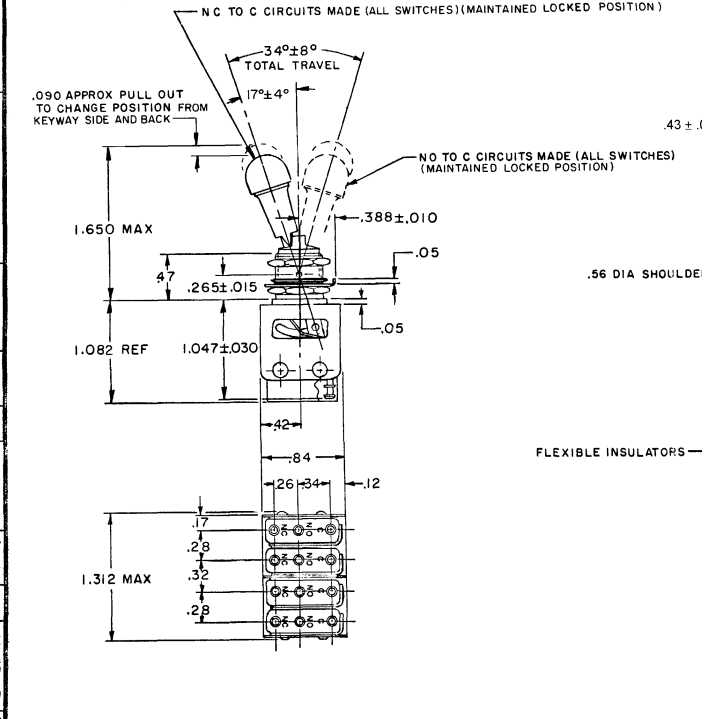
A	080402	JAL	21FRT 95
B	093688	WRS	23 OCT 98
C	028336	CCT	21 DEC 98
D	207069	MDM	19 DEC 02
E	009875	RSR	15 OCT 04

RASTER
DRAWN
OMW
4 FEB 71
CHECK
71

MICRO SWITCH
MILWAUKEE, ILLINOIS, U.S.A.
A DIVISION OF HONEYWELL
FED. MFG. CODE 91929

**ASSEMBLY-
TOGGLE SWITCH**

CATALOG LISTING
23AT74-T2-D
MILITARY P/N
M8805 / 92-002



NOTE-

- 1 - UNIT INCLUDES CAT. LIST. 215M284-T2 BASIC SWITCH (MS25085-2)(4)
- 2 - TERMINALS ARE PLATED FOR SOLDERING
- 3 - OPERATING POSITION SIMULTANEITY OF ALL BASIC SWITCHES MUST BE WITHIN 10° OF LEVER TRAVEL
- 4 - HARDWARE FURNISHED ASSEMBLED WITH SWITCH OR IN PACKET PER MIL-PRF-8805
- 5 - REPLACEMENT MOUNTING HARDWARE PACKET 15PA311-AT

THIS DRAWING COVERS A PROPRIETARY ITEM AND IS THE PROPERTY OF MICRO SWITCH, A DIVISION OF MINNEAPOLIS-HONEYWELL REGULATOR CO. THIS DRAWING IS NOT TO BE COPIED OR USED WITHOUT THE APPROVAL OF MICRO SWITCH.

CHARACTERISTICS	ELECTRICAL DATA		
	CONTACT ARRANGEMENT S P D T (4)		
	SEA LEVEL	50,000 FT	
LOAD	28 VDC	115 VAC	28 VDC
RESISTIVE	5	5	5
INDUCTIVE	3	5	2.5
LAMP	2.4	1.5	2.4

SCALE FULL
DO NOT SCALE PRINT

UNLESS OTHERWISE NOTED
DIMENSIONS ARE IN INCHES

TOLERANCES ARE:

ONE PLACE	(.05)	±.010
TWO PLACE	(.001)	±.005
THREE PLACE	(.000)	±.0005

WEIGHT