

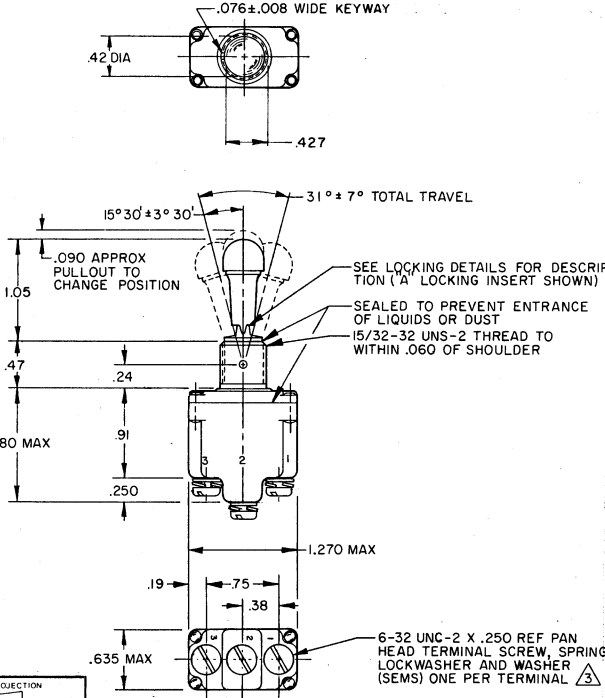
CATALOG LISTING
1TL11 SERIES CHART 2
 ISSUE 16
 PAGE 1 OF 1
 RELEASE NO. CO-13170
 REPLACES
 CHECK
 REVISIONS
 A D077842
 J A F
 28 JUN 94
 CHECK
 DRAWN
 J A F
 28 JUN 94
 CHECK

MICRO SWITCH
 FREEPORT, ILLINOIS, U.S.A.
 A DIVISION OF HONEYWELL
 FED. REG. CODE 91922

SWITCH-TOGGLE

CATALOG LISTING
1TL11 SERIES
CHART 2

THIS DRAWING COVERS A PROPRIETARY ITEM AND IS THE PROPERTY OF MICRO SWITCH, A DIVISION OF HONEYWELL. THIS DRAWING IS NOT TO BE COPIED OR USED WITHOUT THE APPROVAL OF MICRO SWITCH.



THIRD ANGLE PROJECTION

SCALE FULL

DO NOT SCALE PRINT

TOLERANCES
 APPLY TO DESIGN UNITS. DIMENSIONS ARE ONLY FOR REFERENCE, UNLESS NOTED. TOLERANCES ARE 2

NO. PLACES	INCH	MILLIMETER	NO. PLACES	INCH	MILLIMETER
1	±.005	±.0127	1	±.005	±.0127
2	±.0025	±.00635	2	±.0025	±.00635
3	±.0015	±.00381	3	±.0015	±.00381
4	±.0010	±.00254	4	±.0010	±.00254

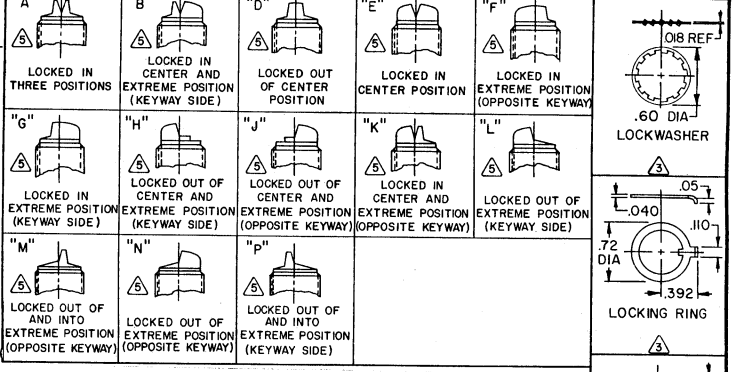
DESIGN UNITS: METRIC US CUSTOMARY

FOR MATERIAL—COMMERCIAL STANDARDS MICRO SWITCH IS ADVISED APPLY

DIMENSIONS ARE TO BE MET BEFORE PROTECTIVE COATING IS APPLIED

WEIGHT .08 LBS APPROX

CATALOG LISTING	AVAILABLE LOCKING COMBINATIONS FOR CONFIGURATION SEE LETTERED DETAILS	CIRCUIT MADE WITH TOGGLE LEVER IN			CURRENT CAPACITY (AMPS)								
		KEYWAY SIDE (1-2)	CENTER (1-2)	OPPOSITE KEYWAY (2-3)	RESISTIVE LOAD		LAMP LOAD		INDUCTIVE LOAD				
					DC VOLTS	AC VOLTS	28 VDC	125 VAC	28 VDC	125 VAC			
1TL11-1	A,B,D,E,F,H,K,L,M,N,P	ON	OFF	ON	20	75	5	15	6	5	3	15	10
1TL11-2	D,F,G	OFF	NONE	ON									
1TL11-3	D,F,G	ON	NONE	ON									
1TL11-21	E,F,K,M	NONE	OFF	ON									
1TL11-31	E,F,K,M	NONE	ON	ON									
1TL11-4	F	MOM OFF	NONE	ON									
1TL11-5	E,F,K,L,M,N	MOM ON	OFF	ON									
1TL11-6	F	MOM ON	NONE	OFF									
1TL11-7	E,L,N	MOM ON	OFF	MOM ON	15	75	.5	15	6	4	2	10	7
1TL11-8	F	MOM ON	NONE	ON									
1TL11-51	E	NONE	ON	MOM ON									
1TL11-61	E	MOM ON	OFF	NONE									
1TL11-82	G	ON	NONE	MOM ON									



- NOTES
- SWITCHES ARE CAPABLE OF WITHSTANDING A TEMPERATURE OF 160°F CONTINUOUSLY AT FULL RATED LOAD
 - POLE, CIRCUIT DESIGNATION AND MICRO SWITCH CATALOG LISTING MARKED IN SIDE OF SWITCH
 - FURNISHED UNASSEMBLED
 - FOR TERMINAL COVER, SEE MICRO SWITCH CATALOG LISTING 5PA7
- KEYWAY SHOWN ON LEFT SIDE
- SUFFIX LETTER MUST BE ADDED FOR DESIRED TYPE OF TOGGLE LOCKING. SEE CHART FOR AVAILABLE LOCKING COMBINATIONS
- APPLIES ONLY TO "ON" AND "MOMENTARY ON" POSITIONS

