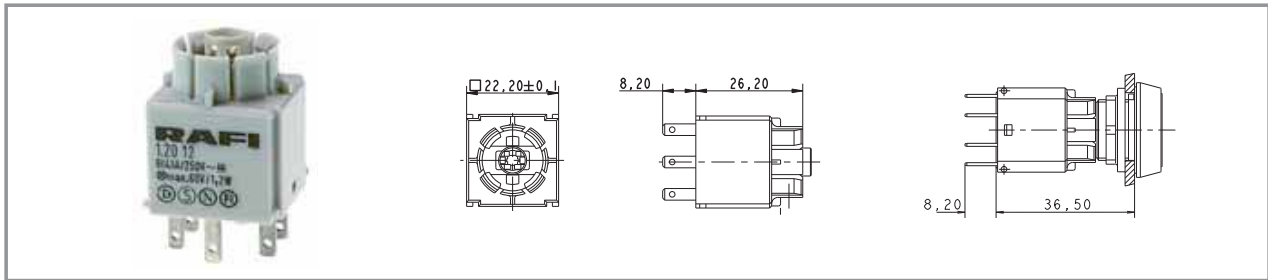


RAFIX 16 - Contact blocks with silver contacts



2

RAFIX
16

Technical Data

Dimensions

Size not mounted see order block
Mounting depth (with actuator / indicator) see order block

Mechanical design

Mounting snap on actuator
Contact system bridge-contact self cleaning
Contact materials Ag
Contact arrangement see order block
Contact function see order block
Lamp socket see order block
Terminals see order block
Terminal marking according to DIN 50013, X1 = +, X2 = -

Operating travel 3 mm
Robustness 100 N

Mechanical characteristics

Robustness acc. to IEC 60947-5-5

Electrical characteristics

Rated insulation voltage 250 V
acc. to VDE 0110, AC
Rated insulation voltage 300 V
acc. to VDE 0110, DC
Ohmic rated current I_R 6 A
Rated motor current $I_{M\ nenn}$ 4 A
Application category acc. to AC 15B 300
VDE 0660 Teil 200
Application category acc. to DC 13Q 300
VDE 0660 Teil 200
Rated insulation voltage U_i , AC 250 V
Rated insulation voltage U_i , DC 300 V
Rated voltage $U_E/$ 250 V/1.5 A,
Rated current I_E , AC 120 V/3.0 A V
Rated voltage $U_E/$ 250 V/0.27 A,
Rated current I_E , DC 125 V/0.55 A, 60 V/1 A,
24 V/2 A V
Thermic rated current I_{the} , AC 5 A
Thermic rated current I_{the} , DC 2.5 A

Operating life switching element AC 100,000 at 6A,
800,000 at 2A
Operating life switching element DC 250,000 at 220 V/0.2 A,
1,000,000 at 24 V/2 A
Rated power DC $10 \times I_E$
Rated power AC $1.1 \times I_E$
Contact resistance when new max. 20 mΩ

Other specifications

Protection class II
Corresponding to EU directive NSR 72/73 yes
Shock resistance acc. to IEC 60068-2-27 amplitude < 50g,
11ms, half sinusoidal
Operation temperature min. -25 °C
Ambient temp. operating max. without lamp /LED +70 °C
Ambient temp. operating max. with lamp /LED +55 °C
Storage temperature min. -40 °C
Storage temperature max. +85 °C
Colour code grey bottom
Environmental resistance acc. to IEC 60068-2
-14, -30, -33 and -78 100,000
Mechanical operating life latching (operations) 10 g at 20 ... 500 Hz
Resistance to vibrations acc. to IEC 60068-2-6
Flame class acc. to UL 94 V 0
Hot wire ignition acc. to IEC 60695-2-1 yes

Approvals



IEC 61058

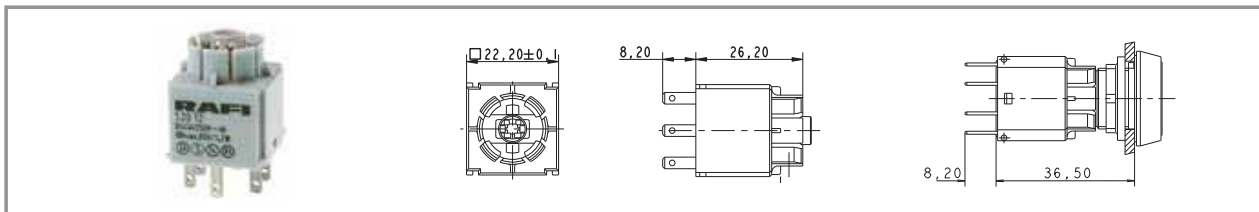


C22.2 No. 14-M91

Typical accessories RAFIX 16 - Contact blocks with silver contacts

| Description | Photo | Order no. | Additional accessories see page |
|---|-------|--------------------------|---------------------------------|
| Filament lamp, W 2 x 4.6d base, 24 - 30 V | | 1.90.120.005/0000 | 5 - 4 |
| Filament lamp, W 2 x 4.6d base, 60 V | | 1.90.120.009/0000 | 5 - 4 |
| Filament lamp, W 2 x 4.6d base, 48 V | | 1.90.120.010/0000 | 5 - 4 |
| Filament lamp, W 2 x 4.6d base, 24 V | | 1.90.120.011/0000 | 5 - 4 |
| Filament lamp, W 2 x 4.6d base, 12 V | | 1.90.120.012/0000 | 5 - 4 |
| LED W 2 x 4.6d superbright, red, 24 V | | 1.90.690.361/0000 | 5 - 14 |
| LED W 2 x 4.6d superbright, green, 24 V | | 1.90.690.362/0000 | 5 - 14 |
| LED W 2 x 4.6d superbright, yellow, 24 V | | 1.90.690.363/0000 | 5 - 14 |
| LED W 2 x 4.6d superbright, blue, 24 V | | 1.90.690.364/0000 | 5 - 14 |
| LED W 2 x 4.6d superbright, white, 24 V | | 1.90.690.365/0000 | 5 - 14 |
| Multipole connector | | 5.05.510.421/0000 | 2 - 93 |
| PCB plug-in socket, 10 contacts (universal application) | | 5.05.510.644/0000 | 2 - 92 |
| Female quick-connect terminal DIN 46340-B 2.8-1-MS | | 5.37.540.024/8622 | 2 - 93, 2 - 236 |
| Plug distributor | | 5.37.540.029/6000 | 2 - 93 |
| Protection against contact | | 5.55.103.105/0100 | 2 - 94 |

RAFIX 16 - Standard contact block, silver contacts, with quick-connect terminals



2

RAFIX
16

| Contact function | Contact arrangement | Lamp socket | Rated insulation voltage U_i , AC | Ohmic rated current I_R | Order no. |
|------------------|---------------------|-------------|-------------------------------------|---------------------------|--------------------------|
| momentary | 1 NC + 1 NO | W 2 x 4.6d | 250 V | 6 A | 1.20.122.001/0000 |
| momentary | 2 NO | W 2 x 4.6d | 250 V | 6 A | 1.20.122.002/0000 |
| momentary | 2 NC | W 2 x 4.6d | 250 V | 6 A | 1.20.122.003/0000 |
| latching | 1 NC + 1 NO | W 2 x 4.6d | 250 V | 6 A | 1.20.122.041/0000 |
| latching | 2 NO | W 2 x 4.6d | 250 V | 6 A | 1.20.122.042/0000 |
| momentary | 1 NC + 1 NO | - | 250 V | 6 A | 1.20.122.021/0000 |
| momentary | 2 NO | - | 250 V | 6 A | 1.20.122.022/0000 |
| momentary | 2 NC | - | 250 V | 6 A | 1.20.122.023/0000 |
| latching | 1 NC + 1 NO | - | 250 V | 6 A | 1.20.122.061/0000 |
| latching | 2 NO | - | 250 V | 6 A | 1.20.122.062/0000 |

Technical data see page 2 - 80

Standard contact blocks have one common contact chamber and one actuator plunger. Contact blocks with „latching“ contact function are used as switches. When combined with pushbuttons and mushroom actuators, the switching position is visible, releasing is effected by actuating again.