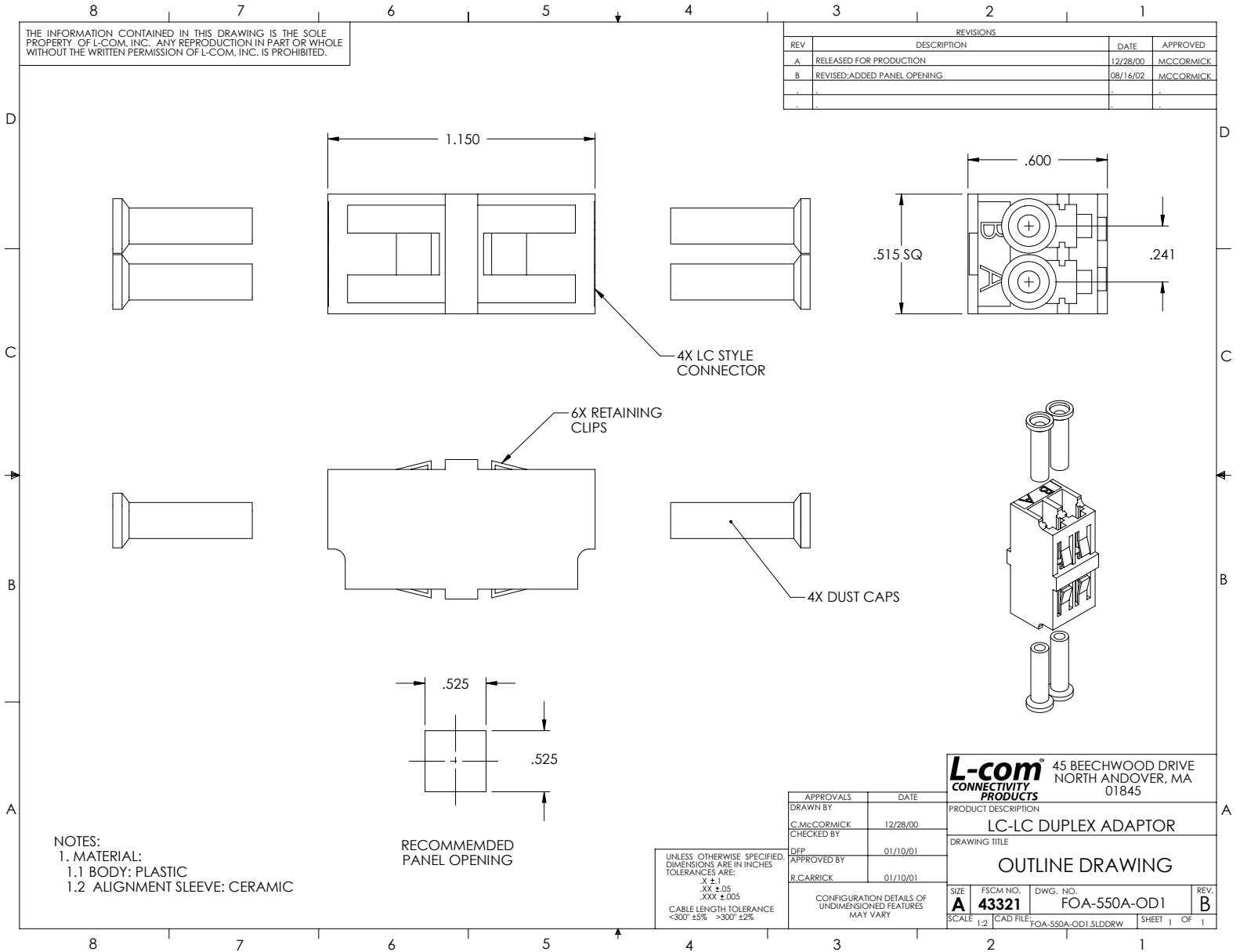


THE INFORMATION CONTAINED IN THIS DRAWING IS THE SOLE PROPERTY OF L-COM, INC. ANY REPRODUCTION IN PART OR WHOLE WITHOUT THE WRITTEN PERMISSION OF L-COM, INC. IS PROHIBITED.

REVISIONS			
REV	DESCRIPTION	DATE	APPROVED
A	RELEASED FOR PRODUCTION	12/28/00	MCCORMICK
B	REVISED: ADDED PANEL OPENING	08/16/02	MCCORMICK



NOTES:  
 1. MATERIAL:  
 1.1 BODY: PLASTIC  
 1.2 ALIGNMENT SLEEVE: CERAMIC

RECOMMENDED  
 PANEL OPENING

UNLESS OTHERWISE SPECIFIED  
 DIMENSIONS ARE IN INCHES  
 TOLERANCES ARE:  
 .X ±.1  
 .XX ±.05  
 .XXX ±.005  
 CABLE LENGTH TOLERANCE  
 <300' ±3% >300' ±2%

APPROVALS	DATE
DRAWN BY C.McCORMICK	12/28/00
CHECKED BY R.CARRICK	01/10/01
DFP APPROVED BY R.CARRICK	01/10/01

**L-com**  
 CONNECTIVITY PRODUCTS  
 45 BEECHWOOD DRIVE  
 NORTH ANDOVER, MA  
 01845

PRODUCT DESCRIPTION  
**LC-LC DUPLEX ADAPTOR**

DRAWING TITLE  
**OUTLINE DRAWING**

SIZE <b>A</b>	FSCM NO. <b>43321</b>	DWG. NO. FOA-550A-OD1	REV. <b>B</b>
SCALE 1:2	CAD FILE FOA-550A-OD1.SLDRW	SHEET 1 OF 1	