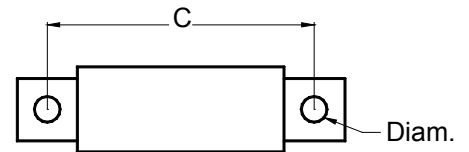
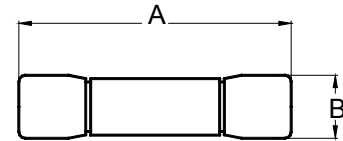


| MODEL NUMBER | AMPS | OVERALL DIMENSIONS | | | |
|---|------|--------------------|------|-------|-------|
| | | A | B | C | DIAM. |
| 300 VAC OR LESS FOR POWER CONTROL TO 30 AMPS | | | | | |
| 49A25-10 | 10 | 52mm | 14mm | | |
| 49A25-15 | 15 | 52mm | 14mm | | |
| 49A25-20 | 20 | 52mm | 14mm | | |
| 49A25-30 | 30 | 52mm | 14mm | | |
| *SOLD ONLY IN BOXES OF 10 | | | | | |
| 600 VAC OR LESS FOR POWER CONTROL TO 30 AMPS | | | | | |
| 49B70-10 | 10 | 52mm | 14mm | | |
| 49B70-20 | 20 | 52mm | 14mm | | |
| 49B70-30 | 30 | 52mm | 14mm | | |
| *SOLD ONLY IN BOXES OF 10 | | | | | |
| ALL FUSE REQUIREMENTS 50 AMPS AND GREATER | | | | | |
| 49A50-50 | 50 | | | 62mm | 8mm |
| 49A50-80 | 80 | | | 73mm | 8mm |
| 49A50-125 | 125 | | | 73mm | 8mm |
| 49A50-150 | 150 | | | 73mm | 8mm |
| 49A50-250 | 250 | | | 83mm | 10mm |
| 49A50-350 | 350 | | | 83mm | 10mm |
| 49A50-450 | 450 | | | 86mm | 10mm |
| 49A50-600 | 600 | | | 86mm | 10mm |
| 49A50-800 | 800 | | | 114mm | 14mm |
| 18TBP/TB CONTROLS | | | | | |
| 49C25-5 | 5 | 33mm | 6mm | | |
| 49C25-10 | 10 | 33mm | 6mm | | |
| 49C25-15 | 15 | 33mm | 6mm | | |
| 49B25-30 | 30 | 52mm | 14mm | | |
| *SOLD ONLY IN BOXES OF 10 | | | | | |
| CONTROL FUSES | | | | | |
| 49D60-1/4 | 1/4 | 38mm | 10mm | | |
| 49D25-3/10 | 3/10 | 38mm | 10mm | | |
| 49D60-1/2 | 1/2 | 38mm | 10mm | | |



NOTES:

1. ONLY listed fuses are factory approved for proper protection of SCRs from short circuit faults.
2. 2-millisecond, sub-cycle fuses are factory coordinated with SCRs by factory conducted short circuit tests.
3. Use of any other fuses, including "I²t", "Fast-acting", or other types not listed here, voids all warranties.
4. Fuse clearing when load is applied to control indicates overcurrent condition at the load, or improperly sized control. Correct load fault before replacing fuses and re-energizing control, or select properly sized fused control.

FOR Model 11D, 11E, 18D, 18DZ, 18E, 18EZ, 36D, 36E POWER CONTROLS

| UNIT NAMEPLATE RATING | | RECOMMENDED FUSE |
|-----------------------|----------|-------------------|
| INPUT VOLTAGE | MAX AMPS | PAYNE ENGINEERING |
| 120 TO 240 VAC | 10A | 49A25-10 |
| | 15A | 49A25-15 |
| | 20A | 49A25-20 |
| | 30A | 49A25-30 |
| 277 TO 480 VAC | 10A | 49B70-10 |
| | 20A | 49B70-20 |
| | 30A | 49B70-30 |
| 120 TO 600 VAC | 50A | 49A50-50 |
| | 80A | 49A50-80 |
| | 120A | 49A50-125 |
| | 150A | 49A50-150 |
| | 250A | 49A50-250 |
| | 350A | 49A50-350 |
| | 450A | 49A50-450 |
| | 600A | 49A50-600 |
| | 1200A | (2) 49A50-600 |

FOR Model 18D-H, 18E-H, 18D-SW, 18E-SW POWER CONTROLS

| UNIT NAMEPLATE RATING | | RECOMMENDED FUSE |
|-----------------------|----------|-------------------|
| INPUT VOLTAGE | MAX AMPS | PAYNE ENGINEERING |
| 120 TO 240 VAC | 10A | 49A25-30 |
| | 30A | 49A25-80 |
| 277 TO 480 VAC | 10A | 49B70-30 |
| | 30A | 49B70-80 |
| 120 TO 600 VAC | 80A | 49A50-150 |
| | 150A | 49A50-250 |
| | 350A | 49A50-600 |
| | 600A | 49A50-600 |

FOR Model 18TBP/TB, 36TBP POWER CONTROLS

| UNIT NAMEPLATE RATING | | RECOMMENDED FUSE |
|-----------------------|----------|-------------------|
| INPUT VOLTAGE | MAX AMPS | PAYNE ENGINEERING |
| 120/240 VAC | 5A | 49C25-5 |
| | 10A | 49C25-10 |
| | 15A | 49C25-15 |
| | 25A | 49A25-30 |