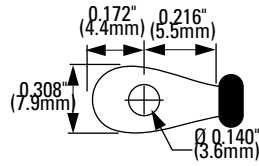
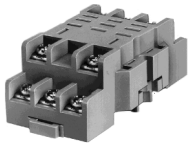
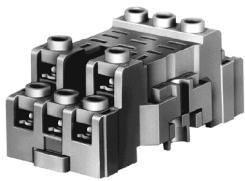
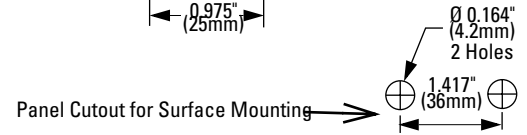
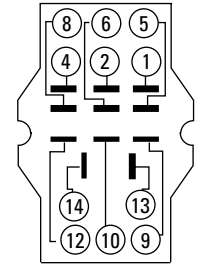
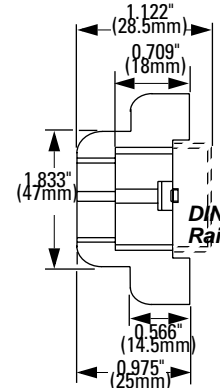
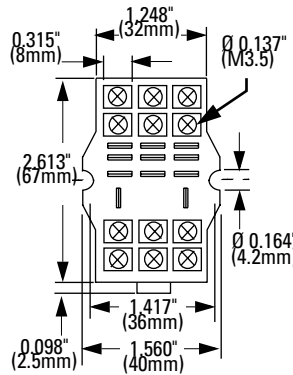


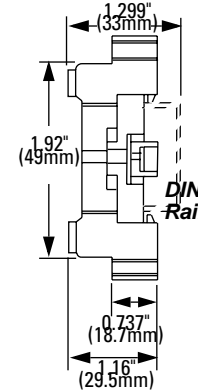
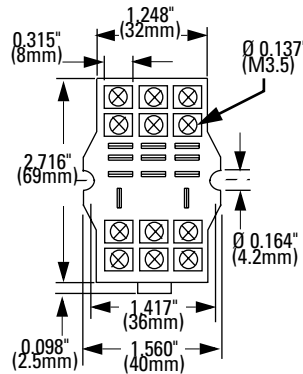
**SH3B Sockets**



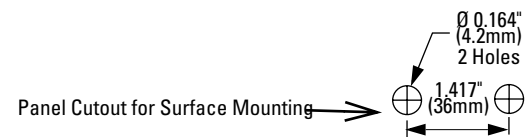
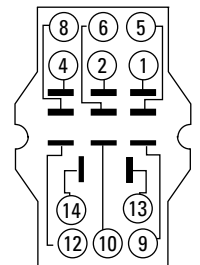
<b>SH3B-05</b>	
<b>Style</b>	11-blade, snap-mount/surface mount
<b>Terminal</b>	M3.5 screws with captive wire clamp
<b>Wire Size</b>	Maximum up to 2-#12AWG
<b>Electrical Rating</b>	300V, 10A
<b>Compatible Relay</b>	RH3B, RH2LB
<b>Hold-Down Spring</b>	SH3B-05F1
<b>Hold-Down Clip</b>	SFA-101 (top notch), SFA-202 (side notch)



<b>SH3B-05C Fingersafe</b>	
<b>Style</b>	11-blade, snap-mount/surface mount
<b>Terminal</b>	M3.5 screws with captive wire clamp, fingersafe
<b>Wire Size</b>	Maximum up to 2-#12AWG
<b>Electrical Rating</b>	300V, 10A
<b>Compatible Relay</b>	RH3B, RH2LB
<b>Hold-Down Spring</b>	SH3B-05F1
<b>Hold-Down Clip</b>	SFA-101 (top notch), SFA-202 (side notch)



**Terminal Arrangements**  
(top view)



1. For socket mounting accessories, see page F-24.
2. For hold-down clip/spring selections, see page F-4.

<b>Specifications</b>	<b>Rated Insulation Voltage</b>	300V; except SH1B and SY4S-62: 250V
	<b>Rated Current</b>	SR/SH/SM: 10A, SY: 7A (SH1B coil terminal 7A)
	<b>Insulation Resistance</b>	100MΩ minimum
	<b>Dielectric Strength</b>	2,000V AC, 1 minute
	<b>Material Grade</b>	UL94V-0


 UL Recognized  
File No. E64245, E62437

 CSA Certified  
File No. LR35144


File No. BL950813332307 \*



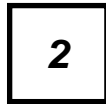
1. \* Applicable to DIN rail sockets only.

## Relay Socket Part Numbering Guide

Relay socket part numbers are composed of 5 part number codes. When ordering a relay socket, select one code from each category.  
Example: SR2P-05C



① Socket Series

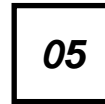


② No. of Poles

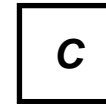


③ Termination

—



④ Mounting Style



⑤ Fingersafe Option

**F**

### Part Numbers: Relay Sockets

	Description	Part Number Code	Remarks
① Socket Series	SR	SR	For use with RR series relays
	SH	SH	For use with RH series relays
	SY	SY	For use with RY series relays
	SM	SM	For use with RU2, RM2 series relays
② No. of Poles	1-pole	1	SH series
	2-pole	2	SR, SH, SM, and SY series
	3-pole	3	SR, and SH series
	4-pole	4	SH series
③ Termination	Tubular pin	P	SR series
	Blade	B	SH series
	Solder/blade	S	SY and SM series
④ Mounting Styles	DIN rail snap-mount	05	To decide between configuration 05 and 06, see pictures and schematics beginning on page F-6
		06	
	Panel mount	51	
	PC board mount	61	
62			
⑤ Fingersafe Option	With finger-protection terminals	C	Available only on SR, SH, SM, and SY series snap-mount sockets
	Without finger-protection terminals	Leave blank	



2. For hold-down springs and clips for DIN rail snap-mount, panel mount, and PC board mount, see page F-4.

3. For socket accessories, see page F-24.