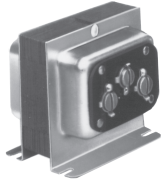




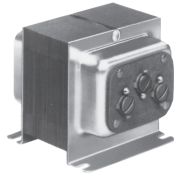
Cat. No. 590



Cat. No. 592



Cat. No. 596



Cat. No. 598

Class 2 Signaling Transformers

Low Voltage

590 Series

FEATURES

- > Non-regenerative thermal overload protection
- > Grounding wire
- > Pre-stripped pigtails
- > Screw terminal connections on secondary

AGENCY APPROVALS

- > UL Listed
- > CSA certified

Edwards 590 Series Class 2 Signaling Transformers are easy to install, low voltage power sources for residential, commercial, and industrial uses.

Mounts in a standard 1/2" (13mm) knockout or surface mounts using the provided foot mounts. These transformers are suitable for mounting in both plastic and metal back boxes. May also be used with the Cat. No. 593 transformer plate for enclosed mounting in a standard two gang outlet box.

The Edwards 590, 590Y & 591 transformers are used in light duty applications. They are ideal for standard doorbells and chimes in residential and commercial applications.

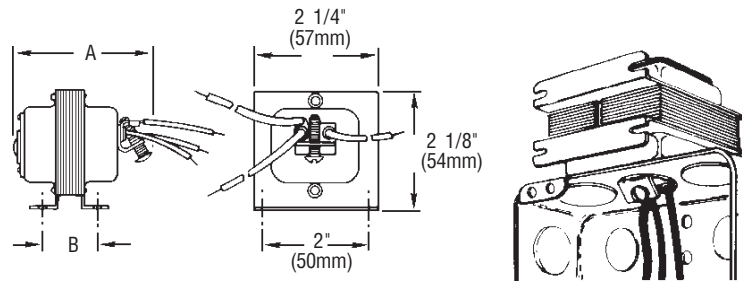
The 592 & 592Y transformers are for commercial and residential use. The 24V, 20VA secondary is ideal for applications requiring longer wire runs such as that needed in multiple family dwellings.

The 596 transformer is used in light duty applications. It is ideal for standard doorbells and chimes in residential and commercial applications. Multiple secondary voltages expand possible usage.

The Edwards 598, 598Y, 599 & 599Y transformers offer high power for long wire runs or for applications requiring greater power such as door openers. Ideal for large apartments and building elevators. When selecting transformers, attention should be given to the power requirements of the signal or load and the wire run between the transformer and load.



TECHNICAL INFORMATION



Cat. No.	Primary Volts 50/60 Hz	Secondary		Dimensions	
		Volts	V A	A	B
590	120V AC	10	5	2 5/16" (58.7mm)	31/32" (24.6mm)
590Y	240V AC	10	5	2 5/16" (58.7mm)	31/32" (24.6mm)
591	120V AC	16	10	2 5/16" (58.7mm)	31/32" (24.6mm)
592	120V AC	8	10	2 1/2" (63.5mm)	1 1/8" (28.5mm)
		16	10		
		24	20		
592Y	240V AC	8	10	2 1/2" (63.5mm)	1 1/8" (28.5mm)
		16	10		
		24	20		
596	120V AC	6	10	2 1/2" (63.5mm)	1 1/8" (28.5mm)
		12	15		
		18	15		
598	120V AC	8	20	2 15/16" (74.6mm)	1 5/8" (41.3mm)
		16	30		
		24	30		
598Y	240V AC	8	20	2 15/16" (74.6mm)	1 5/8" (41.3mm)
		16	30		
		24	30		
599	120V AC	24	40	2 15/16" (74.6mm)	1 5/8" (41.3mm)
599Y	240V AC	24	40	2 15/16" (74.6mm)	1 5/8" (41.3mm)