

Multi-Point Tab and Screw Connectors for Panel / Chassis Mounting

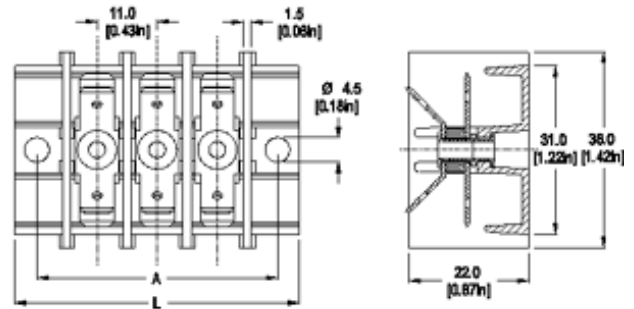


TYPE 307-PCM

11 mm spacing - 1 to 21 poles



RoHS WEEE Pb free compliant



Dimensions: mm (in.)

Length of Connector (L)

$L = \text{No. of Poles} \times \text{Center to Center Spacing} + 19.3 \text{ mm}$

Distance between mounting hole centers (A)

$A = \text{No. of Poles} \times \text{Center to Center Spacing} + 11.3 \text{ mm}$

When locating connector, allow 0.5 mm clearance around it for process-induced variations.

Description

- Multi-Point tab Connector
- Tab arrangements at various angles
- Recommended mounting hardware: M4 pan head screw (#8-32 pan head screw) or similar sized sheet metal screw, self-tapping screw or rivet.

Technical Data

Center to Center Spacing: 11 mm (0.433 in.)

Nominal Cross Section:

2.8 mm (0.110 in.) tabs: 1 mm² (1550 mils²) 4.8 mm

(0.187 in.) tabs: 2.5 mm² (3874 mils²) 6.3 mm

(0.250 in.) tabs: 6 mm² (9299 mils²) Screw side: 4

mm² (6199 mils²)

Wire Stripping Length: 8 mm (0.31 in.)

Approval Information

UL File No.E69841

CSA File No.LR24322

Rating	Current(A)	Voltage(V)	Application group	AWG
UL	25	300	B,C	12 max.
CSA	25	300	B,C,D,E	18-14

* 6.3 mm tab current rating is 25A

4.8 mm tab current rating is 15A

2.8 mm tab current rating is 10A

International Approvals:



Rated Impulse Withstand Voltage: 4000 V