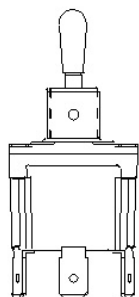




### 31NT91-1



*Actual product appearance may vary.*

**NT Series Toggle Switch, 1 pole, 3 position, Quick Connect terminal, Standard Lever**

#### Features

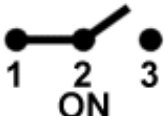

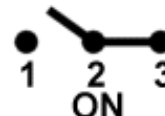
- Completely sealed switching chamber
- NEMA 3, 3R, 4, and 13
- UL recognized, File E12252, Vol. 1, Section 44
- CSA certified, File LR4442
- CE approved

#### Potential Applications

- Aerial lifts, scissor lifts, truck mounted tele-handlers, and cranes
- Construction equipment
- Agriculture equipment
- Material-handling equipment
- Factory-floor control units
- Machine tool equipment manufacturers

#### Description

MICRO SWITCH™ NT Series toggle switches meet the need for a rugged, cost-effective toggle switch. Quality construction features include a seal between the toggle lever and bushing, and between the cover and case. These switches can be used where panels are subject to splashes, hosedowns, or outdoor environments. The "Easy-Start" threaded bushing enables quick alignment of mounting nut to decrease the chance of cross threading. The panel stand-off with O-ring feature available on some listings, eliminates the need for behind-the-panel hardware, provides uniform panel height, and provides a panel to cover seal.

Product Specifications	
Circuitry/ Operating action	<div> <div> <b>Keyway Position</b>   </div> <div> <b>Center Position</b>   </div> <div> <b>Opposite Keyway Position</b>   </div> </div>
Product Type	MICRO SWITCH™ Toggle Switch
Ampere/ Voltage Range (Resistive Load)	0.5 A to 15 A at 0.5 Vac to 277 Vac, 0.5 A at 250 Vdc, 0.75 A at 115 Vdc, 0.5 A to 20 A at 0.5 Vdc to 28 Vdc
Circuitry	SPDT
Action	3 position
Mounting	Bushing 15/32 in
Termination	Quick Connect
Lever Type	Standard
UL/CSA Rating Code	L191: 15 A-125, 250, 277 Vac; 1/2 Hp-125 Vac; 1 Hp-250, 277 Vac; 5 A-120 Vac "L"
Comment	Switches are capable of withstanding a temperature of 160 degrees F continuously at full rated load
Availability	Global
UNSPSC Code	30211908
UNSPSC Commodity	30211908 Toggle switches
Series Name	NT

CATALOG LISTING 3INT91 SERIES CHART 1  
ISSUE 6  
RELEASE NO. PR-20625  
REPLACES  
CHECK  
REVISIONS  
A COR4360 SM 20080509  
B 203335 01M 01JUN01  
C 203551 01M 01AUG01  
D 206707 SM 01MAY03  
E 207702 01M 27 MAR 03  
CHECK  
TSM 29NOV99 CHECK SAV 29NOV99  
PTC/CAD 2D  
DRAWN

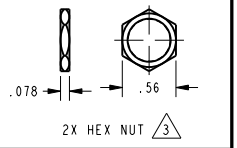
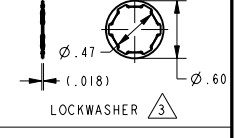
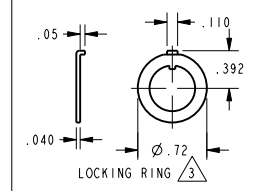
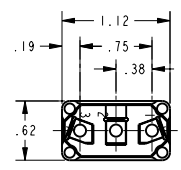
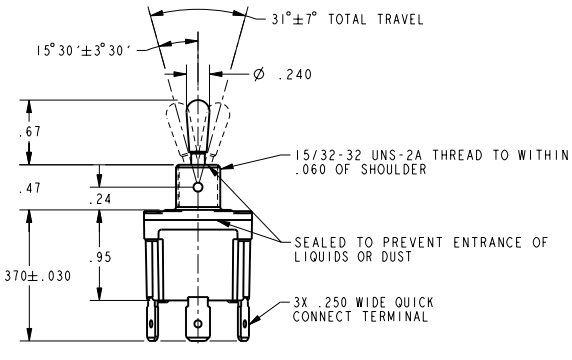
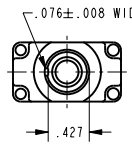
**MICRO SWITCH**  
a Honeywell Division  
FED. MFG. CODE 91929

**SWITCH - TOGGLE**

CATALOG LISTING  
**3INT91 SERIES CHART 1**

THIS DRAWING COVERS A PROPRIETARY ITEM AND IS THE PROPERTY OF MICRO SWITCH, A DIVISION OF HONEYWELL. THIS DRAWING IS NOT TO BE COPIED OR USED WITHOUT THE APPROVAL OF MICRO SWITCH

CATALOG LISTING	CIRCUIT MADE WITH TOGGLE LEVER IN <span style="border: 1px solid black; padding: 0 2px;">4</span>			ELECTRICAL DATA
	KEYWAY SIDE (1-2)	CENTER (1-2)	OPPOSITE KEYWAY (2-3)	
3INT91-1	ON	OFF	ON	L191 15A 125, 250, 277 VAC 1/2HP 125 VAC 1HP 250, 277 VAC 5A 125 VAC "L" <span style="float: right;">CE UL</span>
3INT91-2	OFF	NONE	ON	
3INT91-3	ON	NONE	ON	
3INT91-21	NONE	OFF	ON	
3INT91-31	NONE	ON	ON	
<span style="border: 1px solid black; border-radius: 50%; padding: 0 2px;">C</span>	MOM OFF	NONE	ON	L192 10A 125, 250, 277 VAC 1/4HP 125 VAC, 1/2HP 250, 277 VAC 3A 125 VAC "L" <span style="float: right;">CE UL</span>
3INT91-5	MOM ON	OFF	ON	
3INT91-6	MOM ON	NONE	OFF	
3INT91-7	MOM ON	OFF	MOM ON	
3INT91-8	MOM ON	NONE	ON	
3INT91-51	NONE	ON	MOM ON	
3INT91-61	MOM ON	OFF	NONE	



- NOTES  
1 - SWITCH WILL WITHSTAND TEMPERATURE OF 160°F CONTINUOUSLY AT FULL RATED LOAD  
2 - MICRO SWITCH CAT. LIST. MARKED ON SIDE OF SWITCH FURNISHED UNASSEMBLED  
3 - APPLIES ONLY TO "ON" AND "MOMENTARY ON" POSITIONS  
4 - TO ORDER WITHOUT HARDWARE ADD (-NH) SUFFIX TO CATALOG LISTING  
5 -

THIRD ANGLE PROJECTION

SCALE FULL

DO NOT SCALE PRINT

UNLESS OTHERWISE SPECIFIED TOLERANCES ARE

ONE PLACE (.01) ±.030

TWO PLACE (.00) ±.015

THREE PLACE (.000) ±.005

ANGLES ±

WEIGHT .07 LB APPROX

ANSI Y14.5M-1982 APPLIES