

## CHASSIS MOUNT



Primary Power Components Division

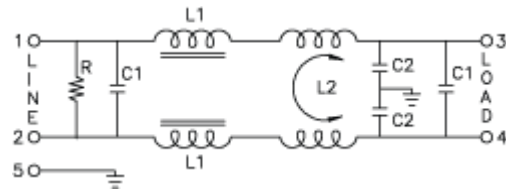
[EMI Filter Cross Reference](#)

[EMI Filter Inquiry Form](#)

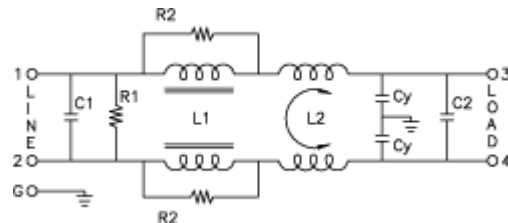
**RoHS  
Compliant**

## 848 Series Multi-Purpose Filters

A compact filter providing noise suppression in industrial environments



**3 - 6 - 10 AMP**



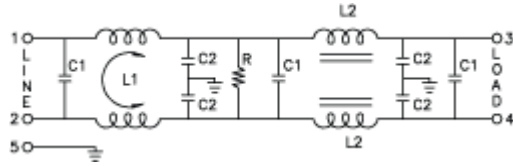
**20 AMP**

Part Number		Similar to Corcom	Amp Rating	Size L x W x H
848-03/001		10EC1	3	3.25 x 1.90 x 1.15
848-06/002		10ED1	6	3.25 x 1.90 x 1.15
848-10/003		10EEA1	10	3.75 x 2.06 x 1.54

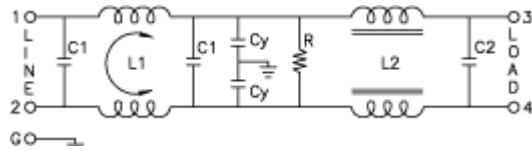
848-20/004		10EEB1	20	5.25 x 4.14 x 1.54
------------	--	--------	----	--------------------

## 849 Series Multi-Purpose Filters

A compact filter providing noise suppression in industrial environments



**3 - 6 - 10 AMP**

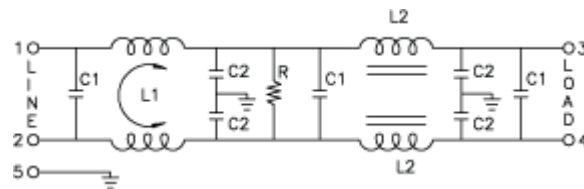


**20 AMP**

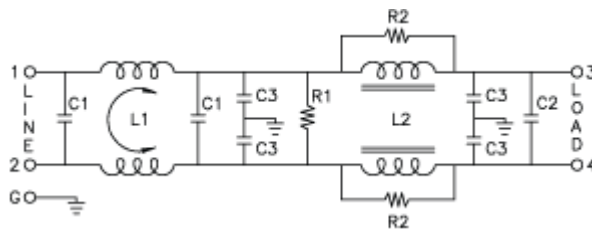
Part Number		Similar to Corcom	Amp Rating	Size L x W x H
849-03/001		3MV1 / 3VVI	3	3.25 x 1.90 x 1.15
849-06/002		6MV1 / 6VV1	6	3.25 x 1.90 x 1.15
849-10/003		10MV1 / 10VV1	10	3.25 x 1.90 x 1.54
849-20/004		20MV1 / 20VV1	20	5.25 x 4.14 x 1.54

## 850 Series Multi-Purpose Filters

A compact filter providing noise suppression in industrial environments



**3 - 6 - 10 AMP**

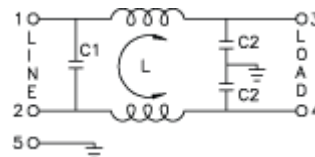


## 20 AMP

Part Number		Similar to Corcom	Amp Rating	Size L x W x H
850-03/001		3VW11	3	3.25 x 1.90 x 1.15
850-06/002		6VW1	6	3.25 x 1.90 x 1.15
850-10/003		10VW1	10	3.25 x 1.90 x 1.15
850-20/004		20VW1	20	5.25 x 4.14 x 1.54

## 851 Series General Purpose Filters

A compact filter providing EMI suppression for electronic equipment



## 3 - 5 - 10 - 20 AMP

Part Number		Similar to Corcom	Amp Rating	Size L x W x H
851-03/003		3VB1/3EB1/3B1	3	2.54 x 2.15 x 0.65
851-03/004*		3VB3/3EB3	3	2.52 x 1.33 x 0.79
851-05/005		5VB1/5EB1/5B1	5	2.54 x 2.15 x 0.65
851-05/006*		5VB3/5EB3	5	2.52 x 1.33 x 0.79
851-10/007		10B1/10EB1/10VB1	10	2.54 x 2.15 x 0.65
851-10/009**		10VB6	10	3.10 x 2.77 x 1.18
851-20/011**		20VB6	20	3.37 x 2.77 x 1.18

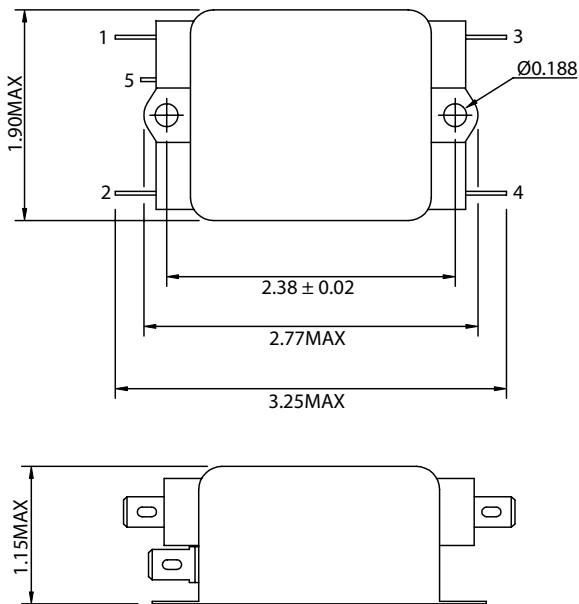
\* Leads without Quick Connects

\*\* Stud Terminals without Quick Connects

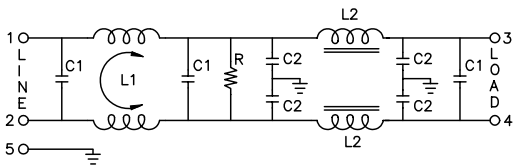
THESE DRAWINGS ARE THE PROPERTY OF QUALTEK ELECTRONICS AND NOT TO BE REPRODUCED FOR OR COMMUNICATED TO A THIRD PARTY WITHOUT THE EXPRESS WRITTEN PERMISSION OF AN OFFICER OF QUALTEK ELECTRONICS.

REVISION		
REV.	DESCRIPTION	APPROVED
B	RoHS Compliancy	DP

PHYSICAL DIMENSIONS:



SCHEMATIC:



- L1: 1.7mH
- L2: 70.0uH
- C1: 0.22uF
- C2: 3300pF
- R: 330KΩ

ELECTRICAL CHARACTERISTICS:

- 1-1. VOLTAGE RATING.....115/250VAC
- 1-2. CURRENT RATING
  - A. @ 115 VAC.....10 A RMS MAX
  - B. @ 250 VAC.....8 A RMS MAX
- 1-3. OPERATING FREQUENCY.....50/60Hz
- 1-4. LEAKAGE CURRENT: EACH LINE TO GROUND
  - A. @ 115 VAC 60Hz.....0.50 mA MAX
  - B. @ 250 VAC 50Hz.....1.00 mA MAX
- 1-5. HIPOT RATING (FOR ONE MINUTE)
  - A. LINE TO GROUND.....2250 VDC
  - B. LINE TO LINE.....1450 VDC
- 1-6. MINIMUM INSERTION LOSS IN dB: (AT 50 OHM SYSTEM)

FREQ. MHz	.01	.05	.10	.15	.50	1.0	5.0	10	30
COM. MODE dB	2	8	12	15	20	30	60	55	45
DIF. MODE dB	0	1	20	25	50	50	45	45	45

- 1-7. OPERATING TEMPERATURE.....-25° TO +85° C
- 1-8. SAFETY:
- 1-9. RoHS COMPLIANT

**CONTROLLED**

Dim range (mm)		Tolerance +/- (mm)		Qualtek Electronics Corp. PPC DIVISION	
0-1	0.15	1-6	0.20	Part Number: 850-10/003	
6-18	0.30	Description: EMI FILTER			
18-50	0.50	UNIT: in			
50-120	0.70	Drawn / Date			
120-250	0.90	B.ZHANG			
250-500	1.20				