

[Home](#) - [Products](#) - [Technical Data](#) - [Reps/Distr.](#) - [Contact Us](#)

CRIMP CONNECTORS - DC SERIES

SPECIFICATIONS:

MECHANICAL:

Shell: steel

Finish: tin plate

Insulator: glass filled PBT UL94V0

ELECTRICAL:

Current Rating: 3 amps max.

Voltage Rating: 250 vac

Dielectric Withstanding Voltage: 1000 vac @ 1 minute

Insulation Resistance: 3000 meg ohm min @ 500 vdc

Contact Resistance: 15 milli ohms (mated)

Temperature Range: -55° TO +105° C

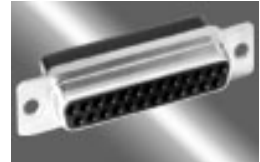
Available Sizes:

Male: 9, 15, 25, 37 & 50 position

Female: 9, 15, 25, 37 & 50 position

[RoHS Compliant](#)

[DOWNLOAD
DRAWING](#)

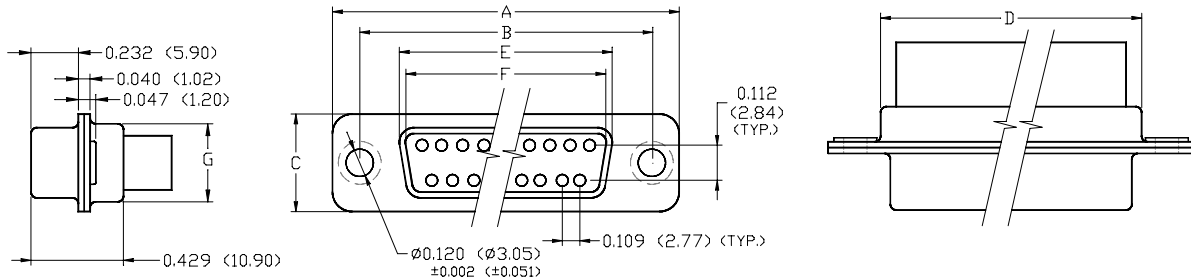
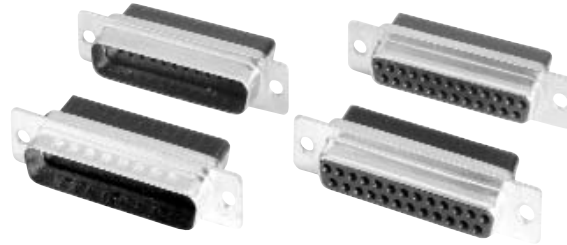


Part Numbers - Tin Plate

[CERTIFICATE OF COMPLIANCE - TIN PLATE](#)

XDCE9PTE	XDCE9ST	XDCE15PTE	XDCE15ST
XDCE9PTEC	XDCE9STC	XDCE15PTEC	XDCE15STC
XDCE25PTE	XDCE25ST	XDCE37PTE	XDCE37ST
XDCE25PTEC	XDCE25STC	XDCE37PTEC	XDCE37STC
XDCE50PTE	XDCE50ST	XDCE50PTEC	XDCE50STC

[Click here for Non-RoHS Compliant Product Part Number Page](#)



SPECIFICATIONS:

MECHANICAL

Shell: Steel
 Finish: Yellow Zinc or Tin Plate.
 Insulator: Thermoplastic UL94V-0 - Black
 Temperature Range: -55° to +105° C.
 Contacts: See Page 30

ELECTRICAL

Voltage Rating: 300 VDC.
 Current Rating: 3 Amps.
 IR: > 3000 Meg OHms.
 CR: < 15 Milliohms.

CRIMP CONNECTORS - DC SERIES - DIMENSIONS							INCHES [MM]	
No. of Contacts	Shell Size	A ± 0.005 [± 0.127]	B ± 0.005 [± 0.127]	C ± 0.005 [± 0.127]	D ± 0.005 [± 0.127]	E Max. Female ± 0.005 [± 0.127]	F Min. Male ± 0.005 [± 0.127]	G ± 0.005 [± 0.127]
9	E	1.213 [30.81]	0.984 [24.99]	0.494 [12.55]	0.759 [19.28]	0.643 [16.33]	0.666 [16.92]	0.422 [10.72]
15	A	1.541 [39.14]	1.310 [33.27]	0.494 [12.55]	1.089 [27.65]	0.971 [24.66]	0.994 [25.25]	0.422 [10.72]
25	B	2.088 [53.04]	1.850 [46.99]	0.494 [12.55]	1.626 [41.30]	1.511 [38.38]	1.534 [38.96]	0.422 [10.72]
37	C	2.730 [69.34]	2.500 [63.50]	0.494 [12.55]	2.261 [57.44]	2.159 [54.84]	2.182 [55.42]	0.422 [10.72]
50	D	2.638 [67.00]	2.406 [61.11]	0.605 [15.37]	2.178 [55.32]	2.064 [52.43]	2.079 [52.81]	0.533 [13.54]

ORDER INFORMATION

