

CHASSIS MOUNT



Primary Power Components Division

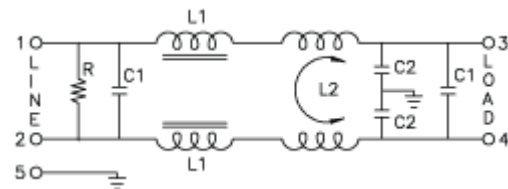
[EMI Filter Cross Reference](#)

[EMI Filter Inquiry Form](#)

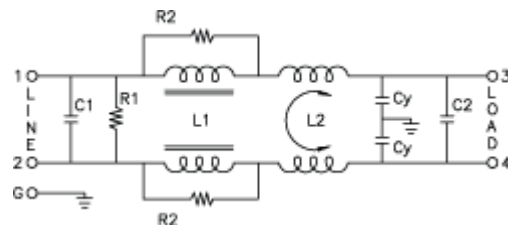
**RoHS
Compliant**

848 Series Multi-Purpose Filters

A compact filter providing noise suppression in industrial environments

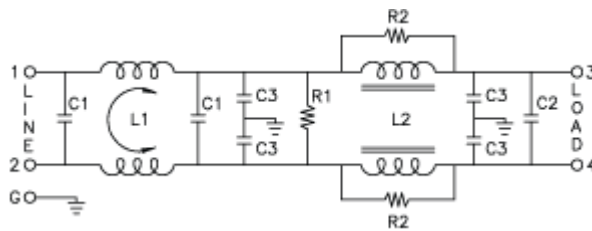


3 - 6 - 10 AMP



20 AMP

Part Number		Similar to Corcom	Amp Rating	Size L x W x H
848-03/001		10EC1	3	3.25 x 1.90 x 1.15
848-06/002		10ED1	6	3.25 x 1.90 x 1.15
848-10/003		10EEA1	10	3.75 x 2.06 x 1.54

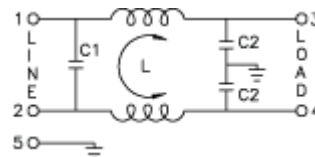


20 AMP

Part Number		Similar to Corcom	Amp Rating	Size L x W x H
850-03/001		3VW11	3	3.25 x 1.90 x 1.15
850-06/002		6VW1	6	3.25 x 1.90 x 1.15
850-10/003		10VW1	10	3.25 x 1.90 x 1.15
850-20/004		20VW1	20	5.25 x 4.14 x 1.54

851 Series General Purpose Filters

A compact filter providing EMI suppression for electronic equipment



3 - 5 - 10 - 20 AMP

Part Number		Similar to Corcom	Amp Rating	Size L x W x H
851-03/003		3VB1/3EB1/3B1	3	2.54 x 2.15 x 0.65
851-03/004*		3VB3/3EB3	3	2.52 x 1.33 x 0.79
851-05/005		5VB1/5EB1/5B1	5	2.54 x 2.15 x 0.65
851-05/006*		5VB3/5EB3	5	2.52 x 1.33 x 0.79
851-10/007		10B1/10EB1/10VB1	10	2.54 x 2.15 x 0.65
851-10/009**		10VB6	10	3.10 x 2.77 x 1.18
851-20/011**		20VB6	20	3.37 x 2.77 x 1.18

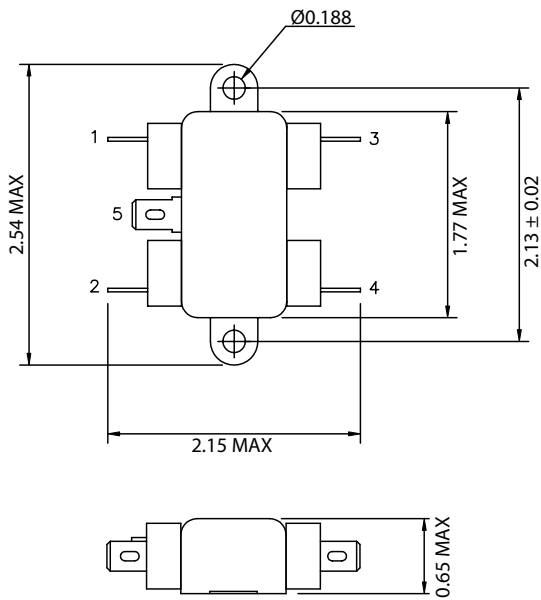
* Leads without Quick Connects

** Stud Terminals without Quick Connects

THESE DRAWINGS ARE THE PROPERTY OF QUALTEK ELECTRONICS AND NOT TO BE REPRODUCED FOR OR COMMUNICATED TO A THIRD PARTY WITHOUT THE EXPRESS WRITTEN PERMISSION OF AN OFFICER OF QUALTEK ELECTRONICS.

REVISION		
REV.	DESCRIPTION	APPROVED
B	RoHS Compliancy	DP

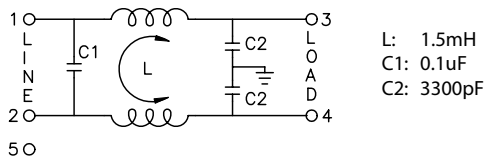
PHYSICAL DIMENSIONS:



ELECTRICAL CHARACTERISTICS:

- 1-1. VOLTAGE RATING.....115/250VAC
 - 1-2. CURRENT RATING
A. @ 115 VAC.....10 A RMS MAX
B. @ 250 VAC.....10 A RMS MAX
 - 1-3. OPERATING FREQUENCY.....50/60Hz
 - 1-4. LEAKAGE CURRENT: EACH LINE TO GROUND
A. @ 115 VAC 60Hz.....0.25 mA MAX
B. @ 250 VAC 50Hz.....0.45 mA MAX
 - 1-5. HIPOT RATING (FOR ONE MINUTE)
A. LINE TO GROUND.....2250 VDC
B. LINE TO LINE.....1450 VDC
 - 1-6. MINIMUM INSERTION LOSS IN dB: (AT 50 OHM SYSTEM)
- | FREQ. MHz | .01 | .05 | .10 | .15 | .50 | 1.0 | 5.0 | 10 | 30 |
|--------------|-----|-----|-----|-----|-----|-----|-----|----|----|
| COM. MODE dB | / | / | / | 20 | 30 | 35 | 50 | 50 | 45 |
| DIF. MODE dB | / | / | / | 6 | 15 | 20 | 44 | 45 | 45 |
- 1-7. OPERATING TEMPERATURE.....-25° TO +85° C
 - 1-8. SAFETY:
 - 1-9. RoHS COMPLIANT

SCHEMATIC:



CONTROLLED

Dim range (mm)		Tolerance +/- (mm)		Qualtek Electronics Corp. PPC DIVISION	
0-1	0.15	1-6	0.20	Part Number: 851-10/007	
6-18	0.30	Description: EMI FILTER			
18-50	0.50	UNIT: in			
50-120	0.70	Drawn / Date			
120-250	0.90	B.ZHANG			
250-500	1.20				