

Free eNewsletter

Enter your E-mail



Shop By Type

Cable Assemblies
Adapters
Connectors
Rack Panels
Bulk Cable
Tools
Switch Boxes
Network Cards
Hubs & Switches
Converters & Transceivers
KVM Switches
Antennas

Overstock/Sale Items
Top 10 Products

Shop By Category

IEEE-488 GPIB
Coaxial
Monitor, Video
Fiber Optic
D-Subminiature
Modular
USB, DIN, Firewire, SCSI, and Others
Wireless Infrastructure
Weatherproof Enclosures
Networking and Other Equipment

Product Wizards

Cable Assemblies
Adapters
Connectors
Rack Panels
Tools
Switch Boxes
Network Cards
Hubs or Switches
Ethernet Converters
KVM Switches

Technical Resources

FAQs
Connector Chart
Glossary
Tutorials
Tips and Videos
White Papers
Catalog Downloads
eNewsletter Archive

You Are Here: [Home](#) > [Modular](#) > [Adapters, Couplers, Splitters](#) > [Modular Couplers](#) > [ECF504- C, SC](#) > **ECF504-SC3**

Category 3 Shielded RJ45 (8x8) Deluxe Panel Coupler Kit

L-com's premium line of Modular Couplers combines innovative design with an affordable price. With a solid die-cast metal mounting frame, these unique coupler kits allow panel mounting in virtually any panel thickness. Designed to work with EIA/TIA 568A and B wiring, these couplers offer a reliable method to pass high-speed data communication through a chassis or rack panel. Couplers listed include Category 3, 5E and 6 performance ratings in both Shielded and Unshielded versions. Kits include a snap-in coupler, mounting frame and 4-40 machine screws.



Features for this Modular product

- EIA/TIA 568A/B compliant insures compatibility and reliability in your application
- Category 3, 5E and 6 performance ratings facilitate high-speed data communication
- RJ45 Female connectors and straight through wiring for network system compatibility
- Fully stamped shielding (where applicable) offers isolation from EMI/RFI
- Flange kit includes a snap-in coupler, mounting frame and 4-40 machine screws

Details for this Modular product

L-com Item #	ECF504-SC3
Manufacturer	L-com
ASIN # (More)	B000AAJDJO
UPC # (More)	822335022461
RoHS Status	RoHS Compliant (More)

- [Tip](#)
- [Video Clip](#)
- [Catalog Page](#)
- [Catalog Page](#)
- [2D Drawing \(.pdf\)](#)
- [3D CAD Model \(.step\)](#)

L-com Exclusive



ECF504-C3 ECF504-SC3



ECF504-C5 ECF504-SC5E



ECF504-C6 ECF504-SC6

See The Video

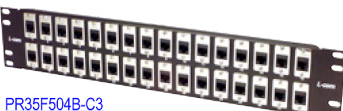
www.L-com.com/Videos/A09



PR175F504B-C3
PR175F504B-C5
PR175F504B-C6



PR175F504B-SC3
PR175F504B-SC5
PR175F504B-SC6



PR35F504B-C3
PR35F504B-C5
PR35F504B-C6



PR35F504B-SC3
PR35F504B-SC5
PR35F504B-SC6



PR175F504B



PR35F504B

Item #	Description	1-9	10-24	25-99	100-249	250-499
--------	-------------	-----	-------	-------	---------	---------

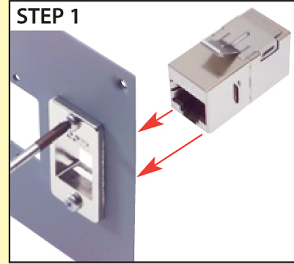
RoHS Compliant Premium Panel Mounted Modular Coupler Kits - Category 3, 5E and 6 - Shielded and Unshielded

These unique coupler kits allow panel mounting in virtually any panel thickness. A solid die-cast metal mounting frame provides secure mounting and reliable grounding. Kits include a snap-in coupler, mounting frame and two 4-40 machine screws.

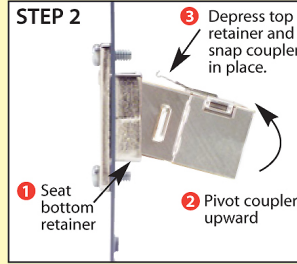
ECF504-C3	Category 3 Unshielded RJ45 (8x8) Deluxe Panel Coupler Kit
ECF504-SC3	Category 3 Shielded RJ45 (8x8) Deluxe Panel Coupler Kit
ECF504-C5	Category 5E Unshielded RJ45 (8x8) Deluxe Panel Coupler Kit
ECF504-SC5E	Category 5E Shielded RJ45 (8x8) Deluxe Panel Coupler Kit
ECF504-C6	Category 6 Unshielded RJ45 (8x8) Deluxe Panel Coupler Kit
ECF504-SC6	Category 6 Shielded RJ45 (8x8) Deluxe Panel Coupler Kit



Tip How to install a premium ECF Kit



Secure frame in specified opening with supplied hardware and align coupler in proper orientation to the opening.



Seat bottom retainer and pivot coupler upward while depressing upper retainer.



Coupler fully seated.

RoHS Compliant Telecom and Network Grade Patch Panels

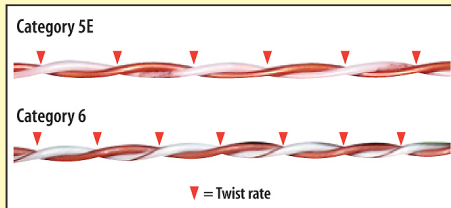
These 19" panels feature L-com's exclusive ECF series flange mounted feed-thru couplers. These couplers are available in Category 3, Category 5E or Category 6 in either shielded or non-shielded styles. The ECF series couplers are unique in that they use 2 4-40 screws to firmly attach the connector flange to the rack panel. The panels have a powder coat black finish for durability and each port is numbered to simplify cable organization and tracking. Both 16 and 32 port versions are available.

PR175F504B-C3	1.75" Panel with 16 Category 3 Couplers
PR175F504B-SC3	1.75" Panel with 16 Category 3 Shielded Couplers
PR35F504B-C3	3.50" Panel with 32 Category 3 Couplers
PR35F504B-SC3	3.50" Panel with 32 Category 3 Shielded Couplers
PR175F504B-C5	1.75" Panel with 16 Category 5E Couplers
PR175F504B-SC5	1.75" Panel with 16 Category 5E Shielded Couplers
PR35F504B-C5	3.50" Panel with 32 Category 5E Couplers
PR35F504B-SC5	3.50" Panel with 32 Category 5E Shielded Couplers
PR175F504B-C6	1.75" Panel with 16 Category 6 Couplers
PR175F504B-SC6	1.75" Panel with 16 Category 6 Shielded Couplers
PR35F504B-C6	3.50" Panel with 32 Category 6 Couplers
PR35F504B-SC6	3.50" Panel with 32 Category 6 Shielded Couplers
PR175F504B	1.75" Panel, 16 ECF Style Cutouts, Black
PR35F504B	3.50" Panel, 32 ECF Style Cutouts, Black



Tip What is the difference between Category 5E and Category 6 100 Ohm UTP?

The new Category 6 Standard adopted in mid 2002 extended key parameters over Category 5E specifications. The additional headroom is intended to provide quality transmission at higher data rates required by emerging applications. As the chart indicates, the most prominent difference is the frequency at which the key parameters are measured. The jump from 100 to 250MHz places a great deal of emphasis on component quality as well as installation techniques. This improvement is commonly noticed by the increased pair twisting and staggering of twisted pairs.



	Category 5E	Category 6
Frequency	100 MHz	250 MHz
Attenuation	22db	19.8db/100M @ 100 MHz 32.8db/100M @ 250 MHz
Return Loss	19db	19db @ 100 MHz 15.6db @ 250 MHz
Delay Skew	45ns	45ns
Near End Crosstalk (NEXT)	35.3db	44.3db @ 100 MHz 38.3db @ 250 MHz
Power Sum Near End Crosstalk (PS-NEXT)	32.3db	42.3db @ 100 MHz 36.3db @ 250 MHz
Equal Level Far End Crosstalk (ELFEXT)	23.8db	27.8db @ 100 MHz 19.8db @ 250 MHz
Power Sum Equal Level Far end Crosstalk (PS-ELFEXT)	20.8db	24.8db @ 100 MHz 16.8db @ 250 MHz

Shop at **L-com.com** or call **1-800-343-1455**
E-mail: sales@L-com.com Fax: 978-689-9484

How to install a premium ECF kit
See the free video tip and more at L-com.com/Videos/A09