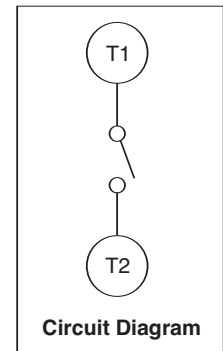
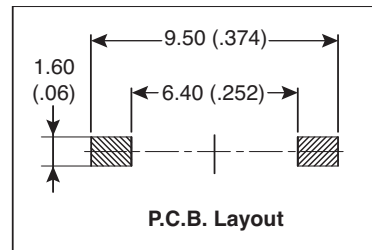
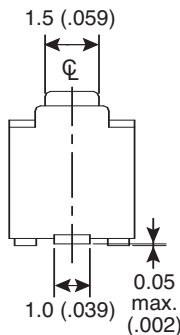
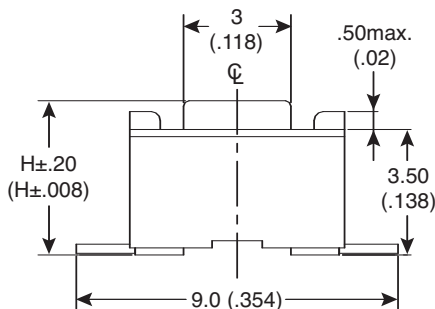
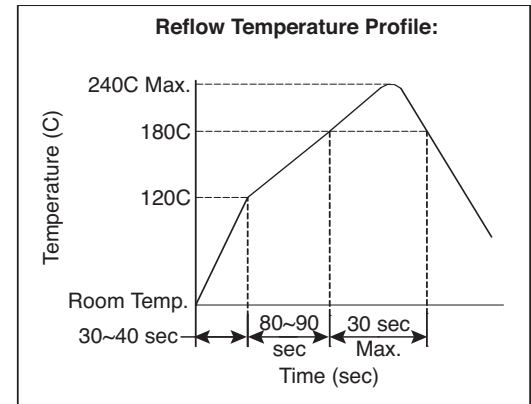
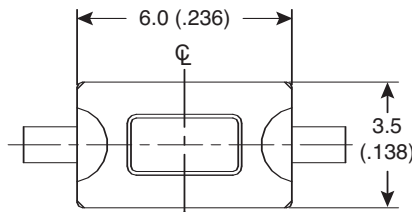
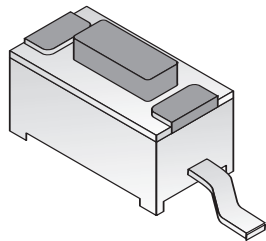


Dimensions: mm (IN.)



Mechanical Specifications:

- Stroke: 0.25 +0.20 / -0.1 mm
- Operating Temperature: -25°C to +70°C
- Storage Temperature: -30°C to +80°C
- Type: SPST

Electrical Specifications:

- Electrical Life: 50,000 cycles for 160gf, 320gf
30,000 cycles for 260gf, 520gf
- Rating: 50mA/12VDC
- Contact Resistance: 100mΩ max.
- Insulation Resistance: 100MΩ min. at 500VDC
- Dielectric Strength: 250VAC/ minute

Materials:

- Cover: Stainless steel
- Base: UL94V-0 Nylon or PPA high-temp. thermoplastic, black
- Stem: UL94V-0 Nylon high-temp. thermoplastic
Color: brown (160gf), red (260gf), salmon (320gf), yellow (520gf)
- Contact Disc: Stainless with silver cladding
- Terminal: Brass with silver cladding

Soldering Process:

- Hand Soldering: Use a soldering iron of 30 watts, controlled at 608°F (320°C) approximately 2 seconds.
- Reflow Soldering: When applying reflow soldering, the peak temperature or the reflow oven should be set at 240°C max.
- Wave Soldering: Recommended solder temperature at 500°F (260°C) max. 5 seconds for through hole type.

Mountain Switch Part No.	Height	Color for Operating Force	
TS4322T5202	5.0 (.197)	Y	Yellow 520g
TS4322T3202	5.0 (.197)	S	Salmon 320g
TS4322T2602	5.0 (.197)	R	Red 260g
TS4322T1602	5.0 (.197)	N	Brown 160g
TS4322T5201	4.3 (.169)	Y	Yellow 520g
TS4322T3201	4.3 (.169)	S	Salmon 320g
TS4322T2601	4.3 (.169)	R	Red 260g
TS4322T1601	4.3 (.169)	N	Brown 160g

Tactile Switches (SMT)

TS4322T5202, TS4322T3202, TS4322T2602
 TS4322T1602, TS4322T5201, TS4322T3201
 TS4322T2601, TS4322T1601

