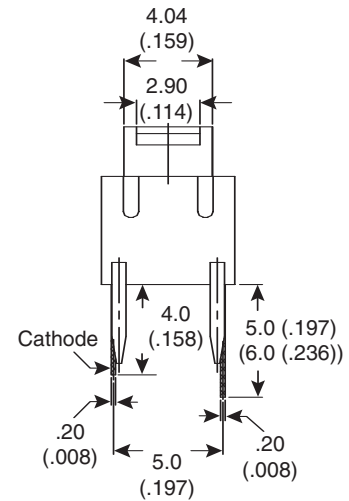
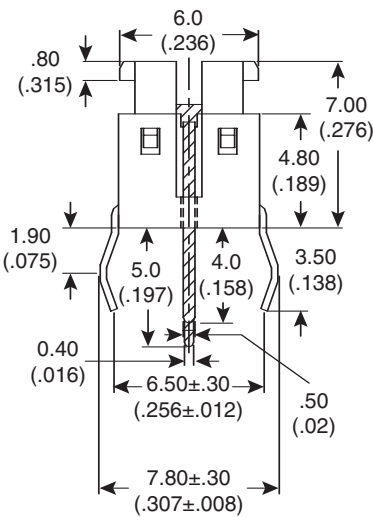
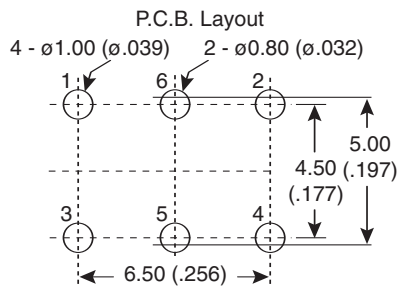
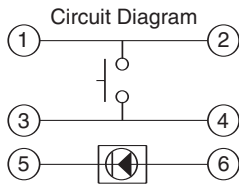
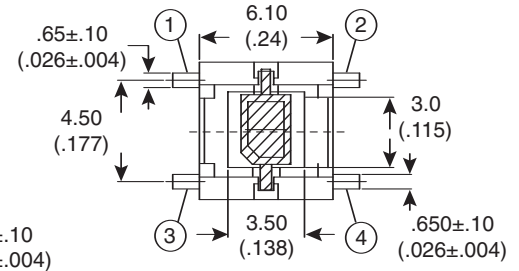
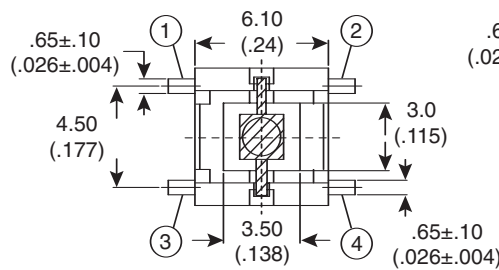
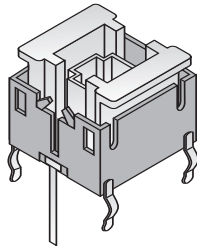


Dimensions: mm (In)



Mechanical Specifications:

- Operaton Force: 160 ± 50gf TS5511T16002 (color)
260 ± 50gf TS5511T26002 (color)
- Stroke: 0.20 + / - 0.10 mm
- Operating temperature: -25°C to +70°C
- Storage temperature: -30°C to +80°C
- Type: SPST

Electrical Specifications:

- Electrical life: 200,000 cycles min. for TL(I)-61, 62, 63
- Rating: 50mA/12VDC
- Contact resistance: 100mΩ max.
- Insulation resistance: 100MΩ min. at 500VDC
- LED Current: 30mA max.
- Dielectric strength: 250VAC/ minute

Materials:

- Contact disc: stainless steel
- Terminal: brass with silver cladding
- Base: LCP high-temp. thermoplastic
Color: black
- Stem: nylon, high-temp. thermoplastic
Color: Brown TS5511T16002 (color)
White TS5511T26002 (color)
- LED Colors: R = red
Y = yellow
G = green
B = blue
W = white

Solder Process:

- Wave soldering: recommended solder temperature at 500°F (260°C) max. 5 seconds.
- Hand soldering: use a soldering iron of 30 watts, controlled at 608°F (320°C) approximately 2 seconds.

illuminated Tactile Switches

TS5511T16002R, TS5511T16002Y, TS5511T16002G,
TS5511T16002B, TS5511T26002R, TS5511T26002Y,
TS5511T26002G, TS5511T26002B, TS5511T16001W,
TS5511T26001W

