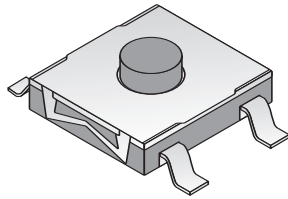
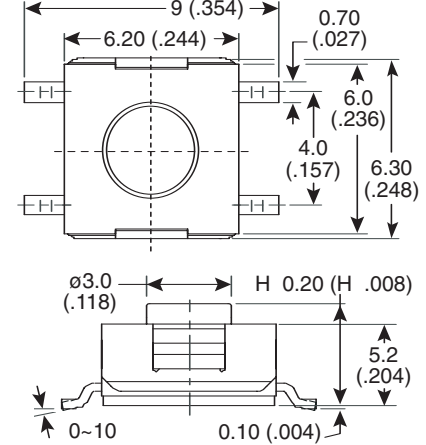
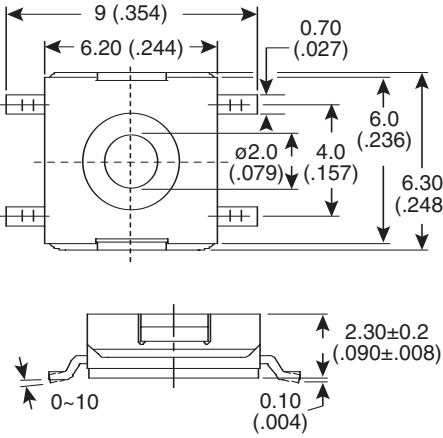
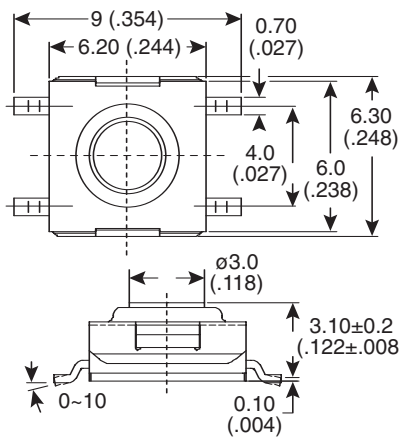
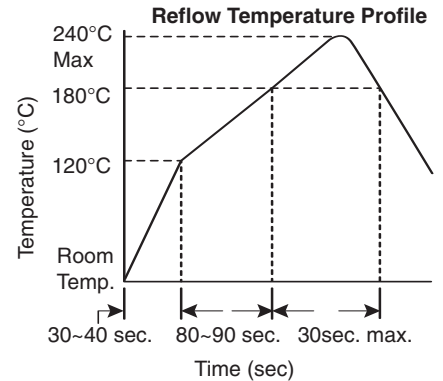
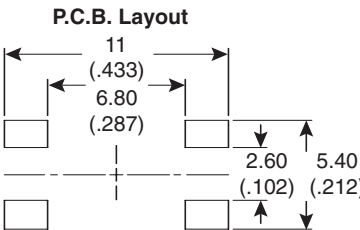
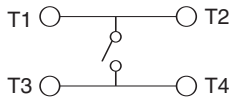


Dimensions: mm (In)



Circuit Diagram



Electrical Specifications:

- Rating: 50mA/12VDC
- Contact resistance: 100mΩ max.
- Insulation resistance: 100MΩ min. at 500VDC
- Dielectric strength: 250VAC/ minute

Mechanical Specifications:

- Stop strength: max 3kgf vertical static load continuously for 15 seconds
- Tol. Stroke: 0.25 + 0.20 / -0.1 mm; 0.6 ± 0.2mm, 0.45 ± 0.2mm
- Operation temperature: -25°C to +70°C
- Storage temperature: -30°C to +80°C
- Type: SPST

Solder Process:

- Wave: recommended solder temperature at 500°F (260°C) max. 5 seconds. (for thru hole type)
- Hand: use a soldering iron of 30 watts, controlled at 608°F (320°C) approximately 2 seconds while applying solder.
- Soldering: vapor phase & IR-reflow soldering can be applied.
- Reflow: when applying, the peak temperature or the reflow oven should be set at 240°C max.

Materials:

- Cover: stainless steel
- Contact disc: phosphor bronze with silver cladding
- Terminal: brass with silver cladding
- Base: UL94V-0 nylon high-temp. thermoplastic; Color: black
- Stem: high-temp. thermoplastic nylon UL94V-0 (66N)
- Adhesive tape: resin-based

Mountain Switch Part No.	Height (H)	Stroke Length (mm)	Color of Stem for Operating Force	Electrical Life Cycles	Metal Stem
TS6824T1601	-	0.25	160g, Silver	100K min.	Brass w/ nickel plated
TS6824T1803	3.5 mm	0.45	180g Brown	500K min.	-
TS6824T2603	3.5 mm	0.45	260g, Red	500K min.	-
TS6824T2604	3.8 mm	0.45	260g, Red	500K min.	-
TS6824T3604	3.8 mm	0.60	360g, Transparent	500K min.	-
TS6824T1805	5.2 mm	0.45	180g Brown	500K min.	-
TS6824T2605	5.2 mm	0.45	260g, Red	500K min.	-
TS6824T3605	5.2 mm	0.60	360g, Transparent	500K min.	-

Tactile Switches (SMT)

TS6824T1601, TS6824T1803, TS6824T2603, TS6824T2604, TS6824T3604, TS6824T1805, TS6824T2605, TS6824T3605

