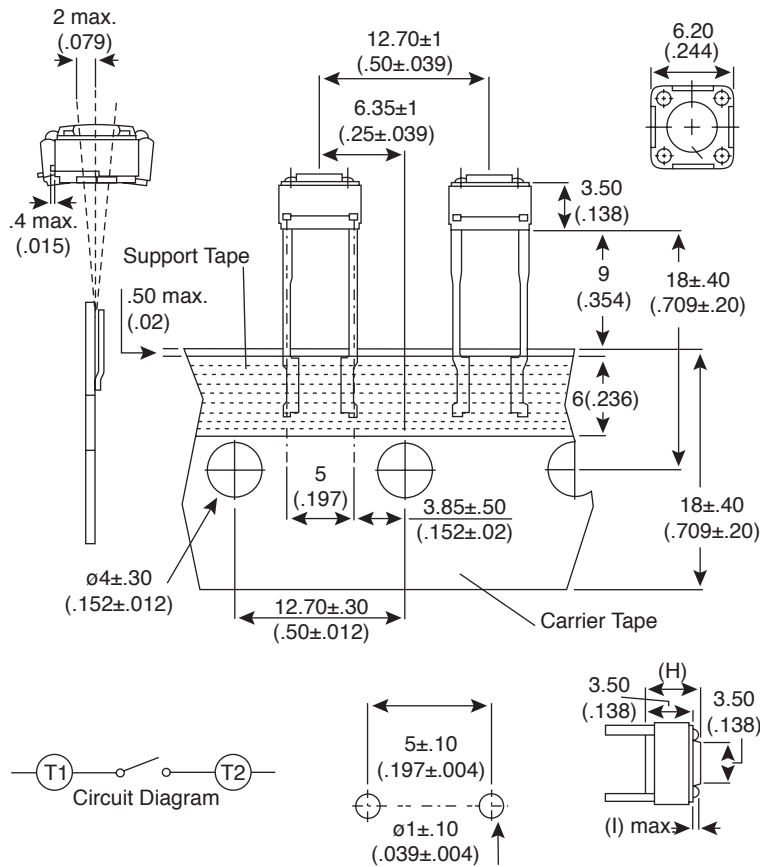


Dimensions: mm (In.)



Mechanical Specifications:

- Type: SPST
- Operation Force: 160 ±50gf
- Stop Strength: Max. 3kgf vertical static load continuously for 15 secs.
- Stroke: (6x6) 0.25+0.2mm/-0.1mm
- Operating Temp: -25°C to +70°C
- Storage Temp: -30°C to +80°C

Electrical Specifications:

- Electrical Life: 1,000,000 cycles
- Rating: 50mA/12VDC
- Contact Resistance: 100M Ohm max.
- Insulation Resistance: 100M Ohm min. at 500VDC
- Dielectric Strength: 250VAC/ minute

Materials:

- Cover: Steel
- Base: UL94V-O Nylon Thermoplastic (blk)
- Stem: UL94V-O Nylon Thermoplastic (brn)
- Contact Disc: Phosphor Bronze w/ Silver Cladding
- Terminal: Brass w/ Silver Cladding

Soldering Process:

- Wave Soldering: Recommended solder temperature at 500°F (260°C) max. 5 seconds
- Hand Soldering: Use a soldering iron of 30 watts, controlled at 608°F (320°C) approx. 2 seconds

Mountain Switch Part No.	(H) Height mm (In.)	(l) mm (In.)
TS7311T1607	13.0 (.512)	.6 (.0236) Max.
TS7311T1606	9.5 (.374)	.6 (.0236) Max.
TS7311T1603	7.0 (.275)	.6 (.0236) Max.
TS7311T1602	5.0 (.197)	.6 (.0236) Max.
TS7311T1601	4.3 (.169)	.5 (.0197) Max.

Tactile Switches
 TS7311T1601, TS7311T1602, TS7311T1603, TS7311T1607,
 TS7311T1606

Available from Mouser Electronics www.mouser.com 1-800-346-6873