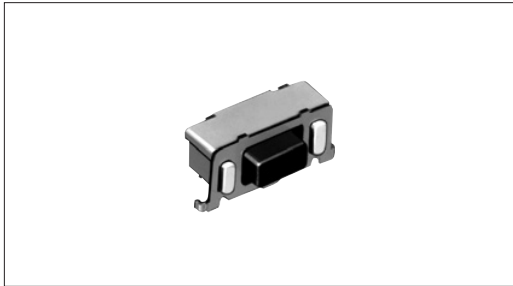


# TACT Switch™ 6.9×3.5mm Compact Side-push™ (Surface mount type) SKQT Series



Horizontal switch with a wide variety of operational force.

- Detector
- Push
- Slide
- Rotary
- Encoders
- Power
- Dual-in-line Package Type
- Multi Control Devices
- TACT Switch™**
- Custom-Products



### Features

- Horizontal type enabling the switch to operate horizontally facing the PC board.
- Reflow solderable.
- Supplied in 16mm width embossed taping.

### Applications

- For various operation in portable devices
- For various operation in devices requiring high density mounting - mobile phones, communication devices and compact electronic devices

### Product Line

Product No.	Operating force	Operating direction	Travel (mm)	Rating (max.)	Rating (min.)	Operating life (5mA 5V DC)	Initial contact resistance
SKQTLCE010	0.98N	Horizontal	0.25	50mA 12V DC	10μA 1V DC	50,000cycles	500mΩ max.
SKQTLAE010	1.57N						
SKQTLBE010	2.55N					30,000cycles	

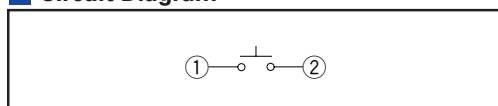
- Sharp Feeling**
- Soft Feeling
- Snap-in Type
- Surface Mount Type**
- Radial Type

### Dimensions

Unit:mm

Style	PC board land dimensions (Viewed from switch mounting face)

### Circuit Diagram



Refer to P.373 for product specifications.  
Refer to P.374 for soldering conditions.  
Refer to P.376 for taping packag specifications.

## Product Specifications

Items		Series	Sharp feeling type	Soft feeling type
		<b>Operating temperature range</b>		
			-30°C to +85°C	-40°C to +90°C
<b>Electrical performance</b>	<b>Insulation resistance</b>	100M Ω min. 100V DC SKEY/PD : 50M Ω min. 100V DC		
	<b>Voltage proof</b>	250V AC for 1minute SKRE/SC/RB/RM/RW/RR/EY/PD : 100V AC for 1minute		
<b>Durability</b>	<b>Vibration</b>	10 to 55 to 10Hz/min., the amplitude is 1.5mm for all the frequencies, in the 3 direction of X, Y and Z for 2hours respectively		
	<b>Lifetime</b>	Shall be in accordance with individual specifications.		
<b>Environmental performance</b>	<b>Cold</b>	-30±2°C for 96h		
	<b>Dry heat</b>	80±2°C for 96h		
	<b>Damp heat</b>	60±2°C, 90 to 95%RH for 96h		

### Note

The automotive operating temperature range to be individually discussed upon request.

### Specifications of LED (SKHJ)

Color of illumination	Power dissipation P (mW)	Forward pulse peak current IFP (mA)	Forward current IFDC (mA)	Reverse voltage VR (V)	Forward voltage VF (V) IF=10mA	Reverse current IR (μA) VR=4V	Peak emission wave length λ peak (nm) IF=10mA	Spectral line half width Δλ (nm) IF=10mA	Luminous intensity IV (mcd) IF=10mA
Red	40	80	15	4	2.7 max. 2.05TYP	5 max.	700 TYP	100 TYP	0.4min. 1.0 TYP
Pure green							555 TYP	20 TYP	0.8min. 2.0 TYP
Amber							590 TYP	30 TYP	0.4min. 1.0 TYP
Orange (High brightness)					630 TYP	40 TYP	1.5min. 4.0 TYP		
Green (High brightness)					565 TYP	30 TYP	2.0min. 5.0 TYP		

Detector

Push

Slide

Rotary

Encoders

Power

Dual-in-line  
Package TypeMulti Control  
Devices

TACT Switch™

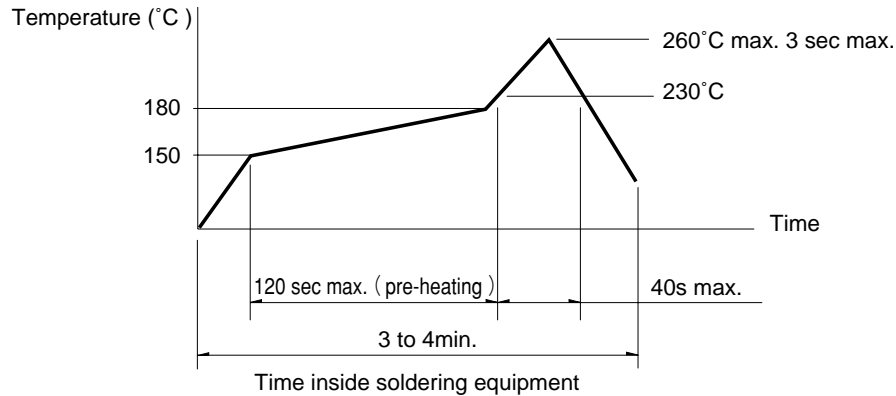
Custom-  
ProductsSharp  
FeelingSoft  
FeelingSnap-in  
TypeSurface  
Mount TypeRadial  
Type

## Soldering Conditions

### Condition for Reflow

Available for Surface Mount Type.

1. Heating method: Double heating method with infrared heater.
2. Temperature measurement: Thermocouple 0.1 to 0.2 φ CA (K) or CC (T) at solder joints (copper foil surface). A heat resistive tape should be used to fix thermocouple.
3. Temperature profile



### Note

1. The above temperature shall be measured on the mounting surface of a PC board. There are cases where the PC board's temperature greatly differs from that of the switch, depending on the material, size, thickness of PC boards and others. The above-stated conditions shall also apply to switch surface temperatures.
2. Soldering conditions differ depending on reflow soldering machines. Prior verification of soldering condition is highly recommended.

Detector

Push

Slide

Rotary

Encoders

Power

Dual-in-line  
Package Type

Multi Control  
Devices

TACT Switch™

Custom-  
Products

Sharp  
Feeling

Soft  
Feeling

Snap-in  
Type

Surface  
Mount Type

Radial  
Type

### Conditions for Auto-dip

Available for Snap-in Type and Radial Type  
(Except SKHJ, SKHL, SKQJ, SKQK, SKEG series)

Items	Condition
Flux built-up	Mounting surface should not be exposed to flux
Preheating temperature	Ambient temperature of the soldered surface of PC board. 100°C max.
Preheating time	60s max.
Soldering temperature	260°C max.
Duration of immersion	5s max.
Number of soldering	2times max.

### Notes

1. Consult with us for TACT Switch™ washing conditions.
2. Prevent flux penetration from the top side of the TACT Switch™.
3. Switch terminals and a PC board should not be coated with flux prior to soldering.
4. The second soldering should be done after the switch returns to normal temperature.
5. Use the flux with a specific gravity of min 0.81.  
(EC-19S-8 by TAMURA Corporation, or equivalents.)

### Manual Soldering (Except SKRT series)

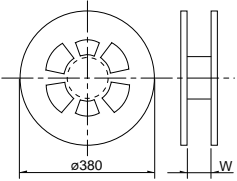
Items	Condition
Soldering temperature	350°C max.
Duration of soldering	3s max.
Capacity of soldering iron	60W max.

# Specification of Embossed Taping Package

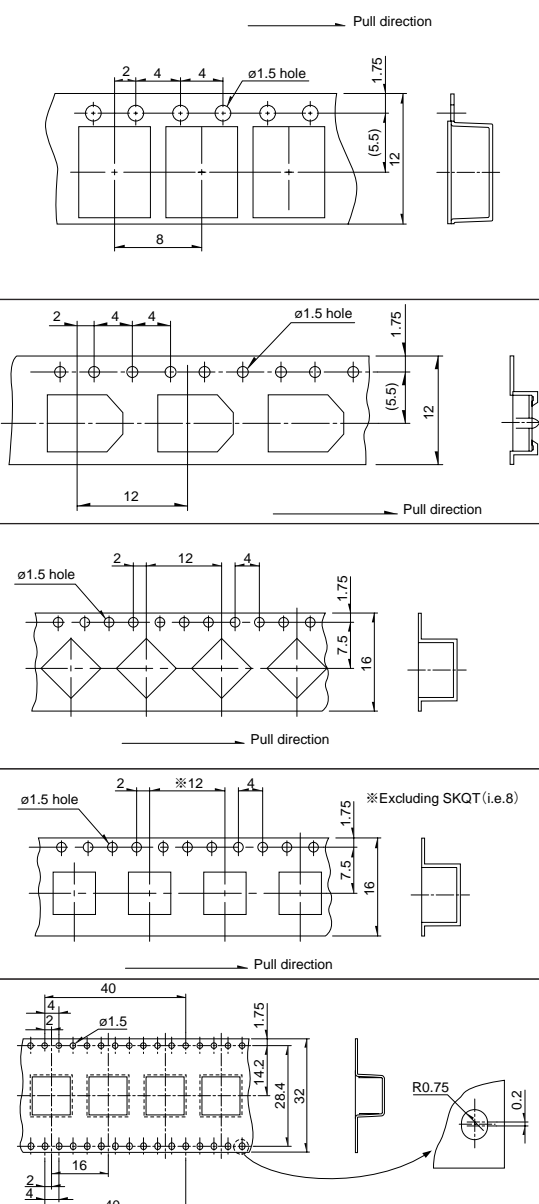
## Taping Packaging for Auto-insertion

Reel Size

Unit:mm

Detector Push Slide Rotary	Plastic Reel 	Applicable series	W
		SKHM, SKHU, SKQG, SKQL, SKQM, SKQR, SKQY, SKRAAK, SKRAAL, SKRB, SKRE, SKRK, SKRM, SKRN, SKRP, SKRT, SKRW, SKPM, SKSC, SKSD	13.5
		SKQT, SKRAAM, SKRAAQ, SKRR, SKPG, SKPN	17.5
		SKQUBA, SKQUBB	33.5

Unit:mm

Applicable series	Qty/reel (pcs.) (Minimum packing unit)	Tape dimensions
SKQM, SKPM	2,000	
SKHM, SKHU, SKQY, SKRT, SKRAAK, SKRAAL	3,000	
SKQG	5,000 (Without stem type) 4,000 (With stem type)	
SKRP	4,000	
SKRKAE, SKRKAH	4,500	
SKQR, SKRB, SKRM, SKRW	10,000	
SKRE, SKRN, SKRKAG, SKSC, SKSD	5,000	
SKQL	3,000	
SKRH	1,300	
SKRV	1,500	
SKPG	1,200	※Excluding SKQT (i.e.8)
SKRAAM, SKRAAQ	1,400	
SKQT	3,000	
SKRR	7,000	
SKPN	1,100	
SKQUBA	750	R0.75 0.2
SKQUBB	600	

**Note**

For ø 330mm diameter reel requirements, please contact us.