

4

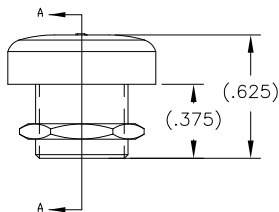
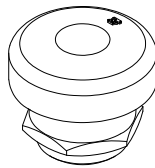
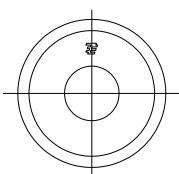
3

2

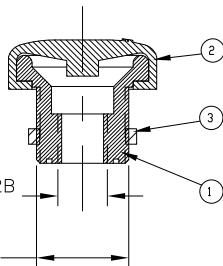
1

THIS DRAWING IS UNPUBLISHED. RELEASED FOR PUBLICATION
 © COPYRIGHT - BY TYCO ELECTRONICS CORPORATION. ALL RIGHTS RESERVED.

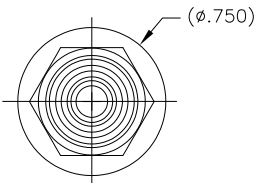
LOC	DIST	REVISIONS				
P	LTR	DESCRIPTION	DATE	DWN	APVD	
AD	00	C	ECO-07-028369	03JAN2007	RB	MW



1/4 - 40 UNS 2B
 THREAD
 15/32 - 32 UNS 2A
 THREAD



SECTION A-A



- COMPONENTS MUST COMPLY WITH EUROPEAN DIRECTIVE 2002/95/EC ON RESTRICTION OF THE USE OF CERTAIN HAZARDOUS SUBSTANCES IN ELECTRICAL AND ELECTRONIC EQUIPMENT (ROHS DIRECTIVE).
- USE PART DRAWING FOR ACTUAL DIMENSIONS. DO NOT TAKE MEASUREMENTS FROM CAD ASSEMBLY DRAWING, RUBBER CAP STRETCHED OVER THE BUSHING.
- SUPPLIED WITH JAM NUT ASSEMBLED.

PART NUMBER	BUSHING MATERIAL	CAP MATERIAL
1825599-1	ABS, BLACK	SILICONE, COLOR RED
1825599-2	ABS, BLACK	SILICONE, COLOR GRAY
1825599-3	ABS, BLACK	SILICONE, COLOR BLACK

NO.	DESCRIPTION	DRAWING NO.	MATERIAL
①	THREADED BUSHING	BUSHING	BLACK ABS THERMOPLASTIC
②	BPT - RUBBER CAP	1825599-CAP	SILICONE, PPK 72R-75S CLASS 2A, GRADE 60, COLOR AS PER ABOVE TABLE
③	15/32-32 UNS-2B NUT	JAM NUT	BRIGHT FINISH NICKEL PLATED BRASS

THIS DRAWING IS A CONTROLLED DOCUMENT.

DIMENSIONS:	TOLERANCES UNLESS OTHERWISE SPECIFIED:
INCHES	
0 PLC	± .005
1 PLC	± .005
2 PLC	± .005
3 PLC	± .010
4 PLC	± .005
ANGLES	± 3'
MATERIAL	FINISH

DWN R BROWN 03JAN2008	Tyco Electronics Corporation Harrisburg, PA 17105-3608
CHK M WILBOURN 03JAN2008	
APVD M WILBOURN 03JAN2008	NAME PUSHBUTTON SWITCH PANEL SEAL
PRODUCT SPEC	SIZE CAGE CODE DRAWING NO
APPLICATION SPEC	A3 00779 C-1825599
WEIGHT	RESTRICTED TO
CUSTOMER DRAWING	SCALE 2:1 SHEET 1 OF 1 REV C