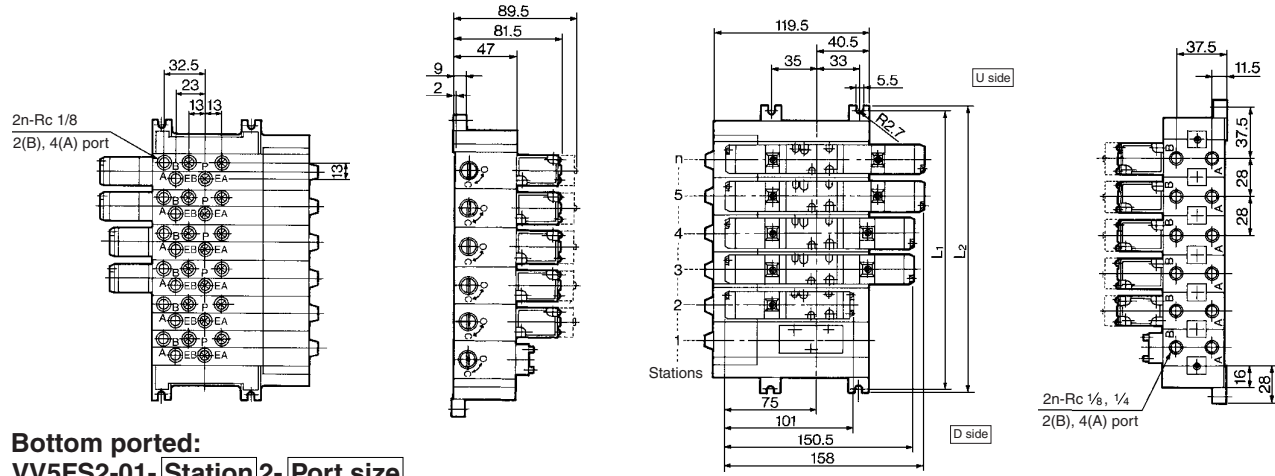


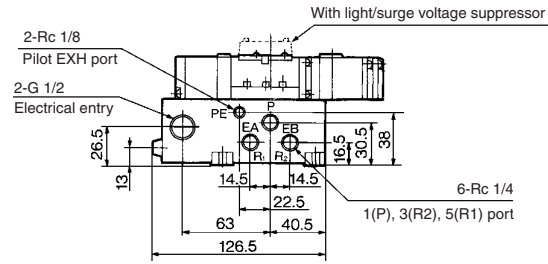
5 Port Pilot Operated Solenoid Valve Metal Seal, Plug-in/Non Plug-in Series VFS2000

Manifold Plug-in type, Non plug-in type

Plug-in type (Insert plug with lead wire): VV5FS2-01- Station 1- Port size

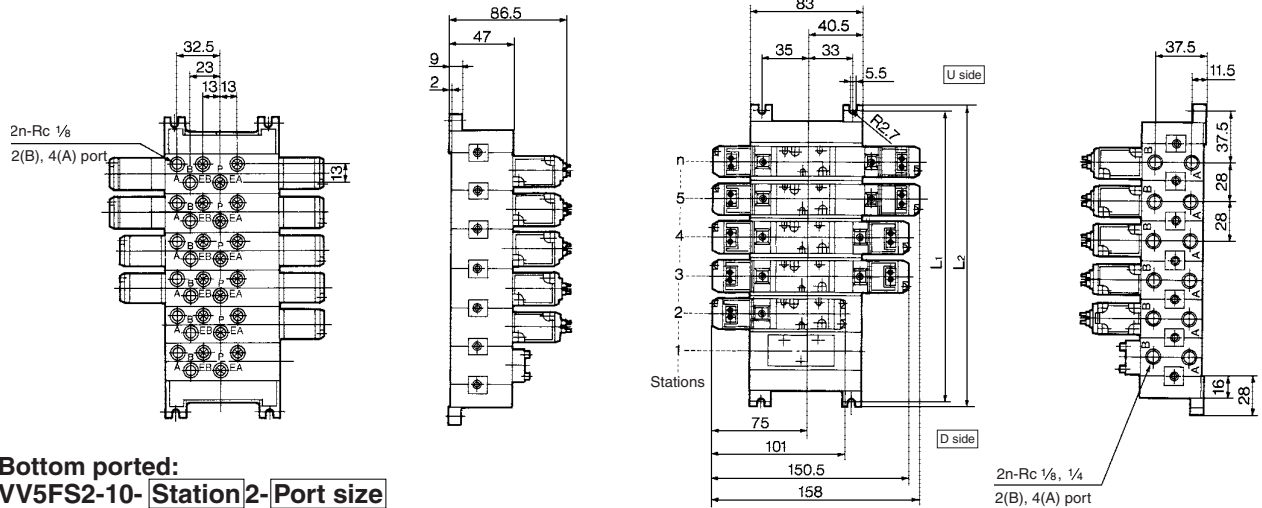


Bottom ported:
VV5FS2-01- Station 2- Port size

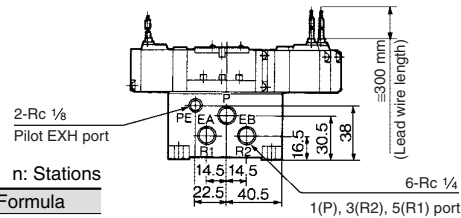


Formula for manifold weight $M = 0.201n + 0.299$ (kg) n: Station

Non plug-in type: VV5FS2-10- Station 1- Port size



Bottom ported:
VV5FS2-10- Station 2- Port size



Formula for manifold weight $M = 0.174n + 0.218$ (kg)

n: Stations

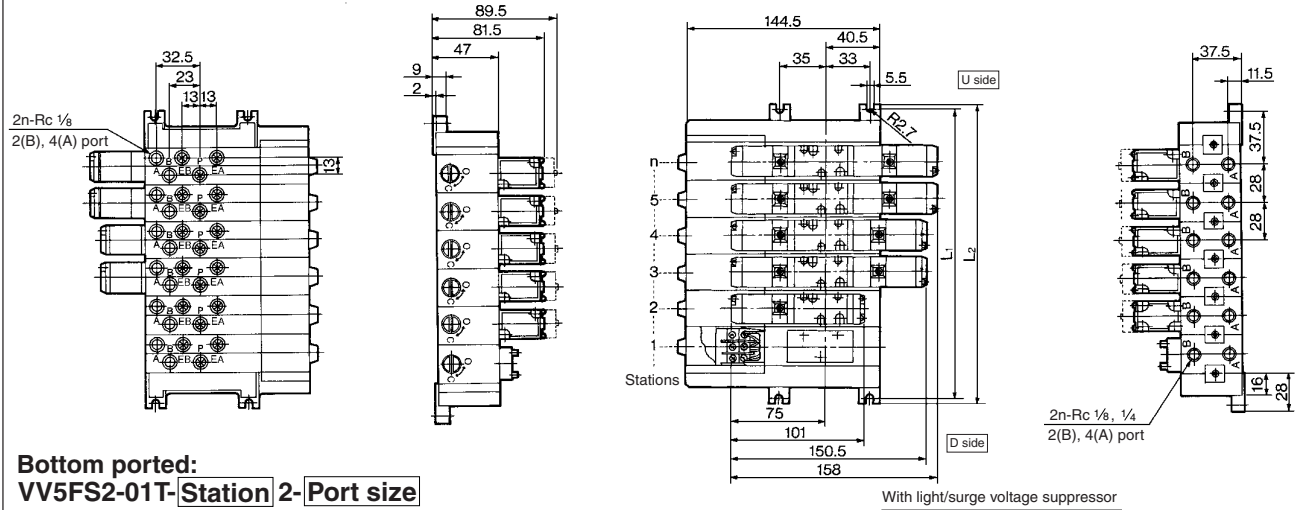
Stations	1	2	3	4	5	6	7	8	9	10	Formula
L ₁	75	103	131	159	187	215	243	271	299	327	L ₁ = 28 x n + 47
L ₂	84	112	140	168	196	224	252	280	308	336	L ₂ = 28 x n + 56

- VK
- VZ
- VF
- VFR
- VP4
- VZS
- VFS
- VS4
- VQ7
- EVS
- VFN

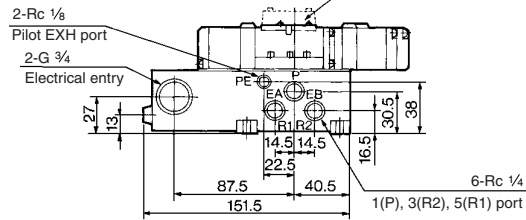
Series VFS2000

Manifold Plug-in type: Individual/One-piece junction cover

Plug-in type with terminal block (Individual junction covers): VV5FS2-01T- Station 1- Port size

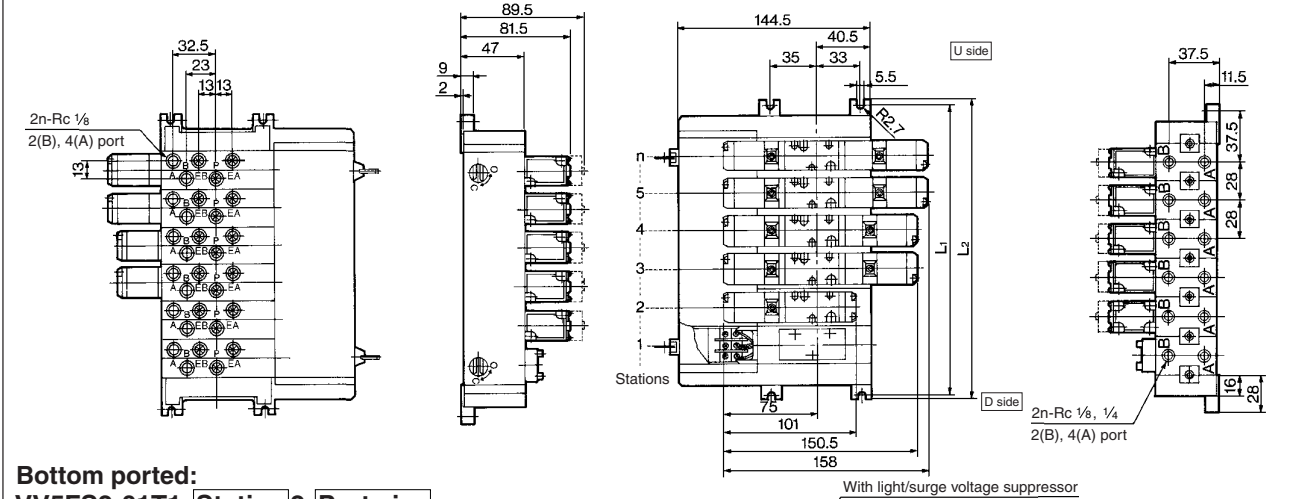


Bottom ported: VV5FS2-01T-Station 2-Port size

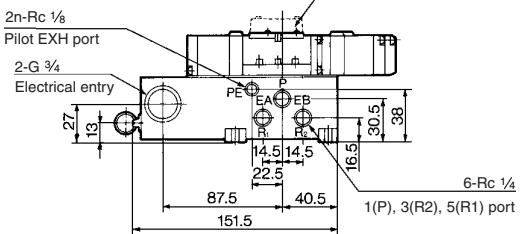


Formula for manifold weight $M = 0.215n + 0.35$ (kg) n: Station

Plug-in type with terminal block (One-piece junction covers): VV5FS2-01T1- Station 1- Port size



Bottom ported: VV5FS2-01T1-Station 2-Port size



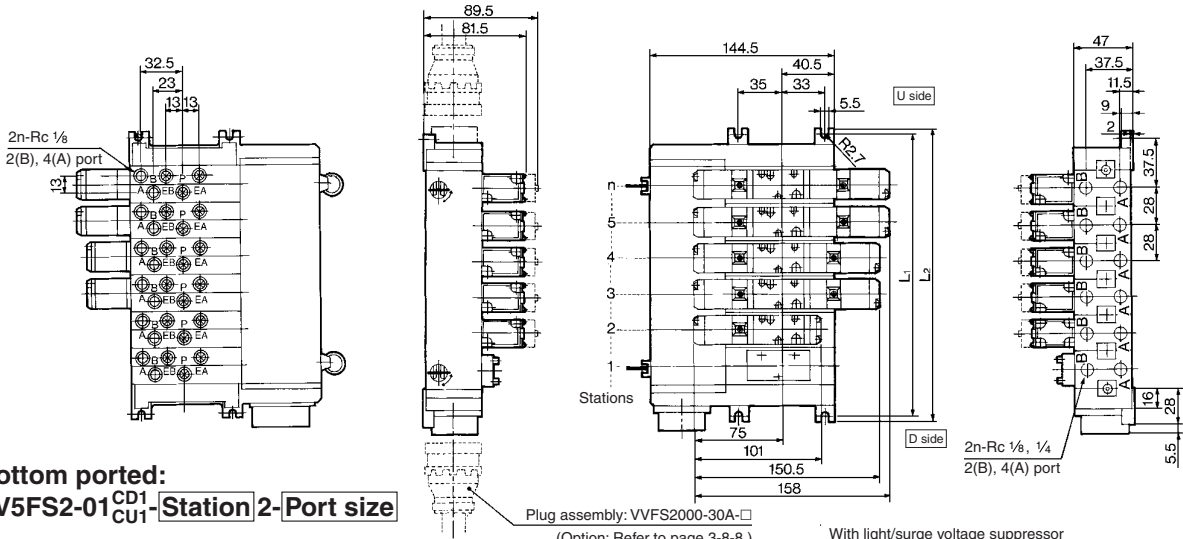
Formula for manifold weight $M = 0.236n + 0.354$ (kg) n: Station

Stations	1	2	3	4	5	6	7	8	9	10	Formula
L ₁	75	103	131	159	187	215	243	271	299	327	L ₁ = 28 x n + 47
L ₂	84	112	140	168	196	224	252	280	308	336	L ₂ = 28 x n + 56

5 Port Pilot Operated Solenoid Valve Metal Seal, Plug-in/Non Plug-in Series VFS2000

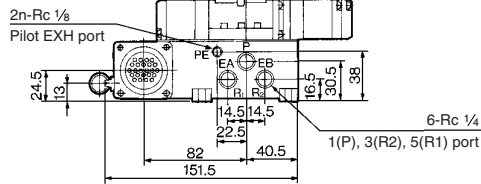
Manifold Plug-in with multi-connector/with D-sub connector

Plug-in with multi-connector: VV5FS2-01CD1- Station 1- Port size, VV5FS2-01CU1- Station 1- Port size



Bottom ported:
VV5FS2-01^{CD1}- Station 2- Port size
VV5FS2-01^{CU1}- Station 2- Port size

Plug assembly: VVFS2000-30A-□
(Option: Refer to page 3-8-8.)
With light/surge voltage suppressor

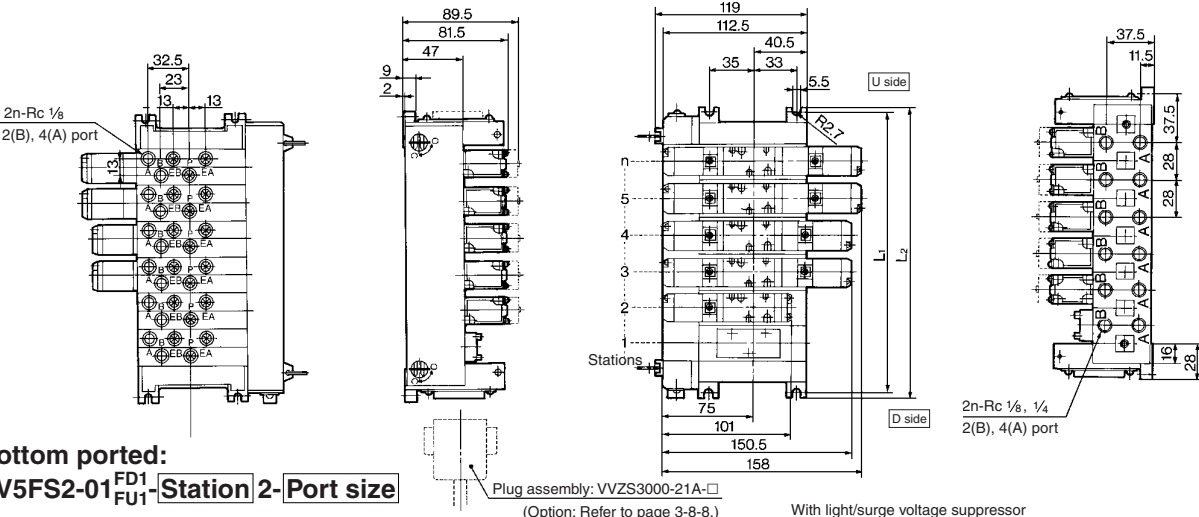


Formula for manifold weight $M = 0.211n + 0.442$ (kg) n: Station
* Wiring specifications: Refer to page 3-8-8.



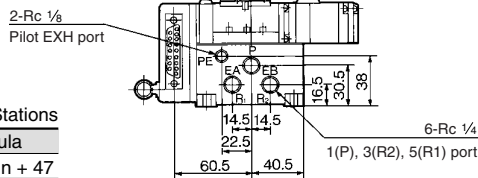
- VK
- VZ
- VF
- VFR
- VP4
- VZS
- VFS
- VS4
- VQ7
- EVS
- VFN

Plug-in type with D-sub connector: VV5FS2-01FD1- Station 1- Port size, VV5FS2-01FU1- Station 1- Port size



Bottom ported:
VV5FS2-01^{FD1}- Station 2- Port size
VV5FS2-01^{FU1}- Station 2- Port size

Plug assembly: VVZS3000-21A-□
(Option: Refer to page 3-8-8.)
With light/surge voltage suppressor



Formula for manifold weight $M = 0.178n + 0.378$ (kg)
* Wiring specifications: Refer to page 3-8-8.

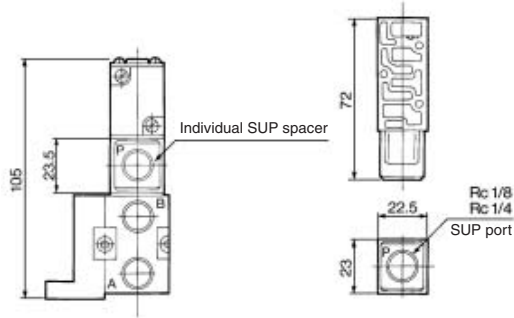


Stations	1	2	3	4	5	6	7	8	Formula
L ₁	75	103	131	159	187	215	243	271	$L_1 = 28 \times n + 47$
L ₂	84	112	140	168	196	224	252	280	$L_2 = 28 \times n + 56$

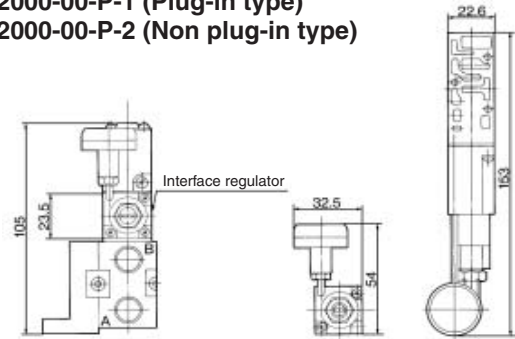
Series VFS2000

Manifold Option Parts Plug-in type, Non plug-in type

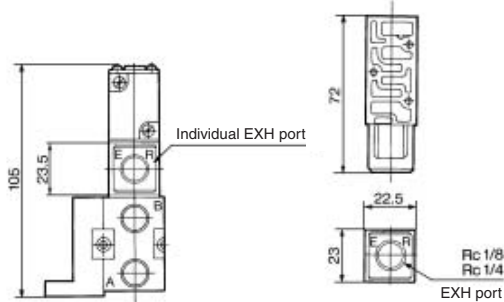
Individual SUP spacer:
 VVFS2000-P-01-1 (Plug-in type)
 VVFS2000-P-01-2 (Non plug-in type)



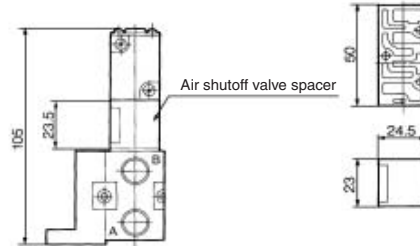
Interface regulator:
 ARBF2000-00-P-1 (Plug-in type)
 ARBF2000-00-P-2 (Non plug-in type)



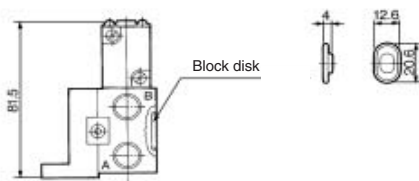
Individual EXH spacer:
 VVFS2000-R-01-1 (Plug-in type)
 VVFS2000-R-01-2 (Non plug-in type)



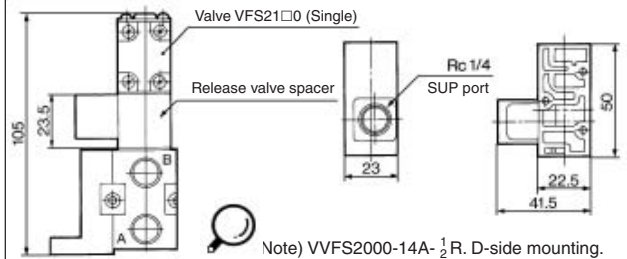
Air shutoff valve spacer:
 VVFS2000-21A-1 (Plug-in type)
 VVFS2000-21A-2 (Non plug-in type)



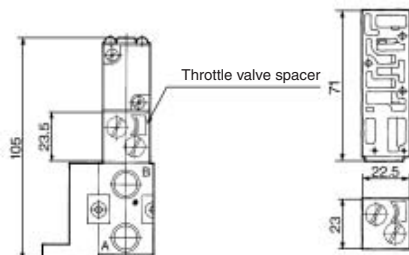
SUP block disk: AXT625-12A
EXH block disk: AXT625-12A



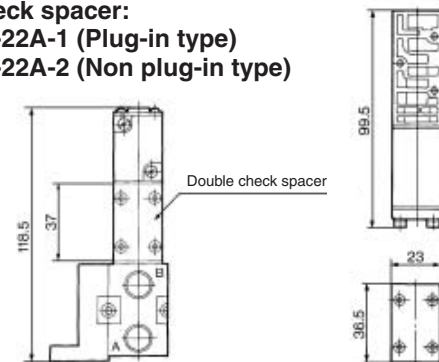
Release valve spacer:
 VVFS2000-24A-1^R (Plug-in type)
 VVFS2000-24A-2^L (Non plug-in type)



Throttle valve spacer:
 VVFS2000-20A-1 (Plug-in type)
 VVFS2000-20A-2 (Non plug-in type)



Double check spacer:
 VVFS2000-22A-1 (Plug-in type)
 VVFS2000-22A-2 (Non plug-in type)



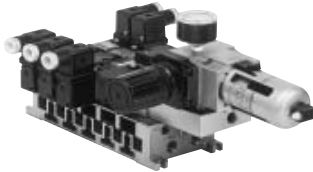
5 Port Pilot Operated Solenoid Valve Metal Seal, Plug-in/Non Plug-in Series VFS2000

Manifold with Control Unit

- Control unit (Filter, Regulator, Pressure switch, Air release valve) are all standardized to the one unit, and can be mounted on the manifold base without any attachments.
- Piping processes are eliminated.



Plug-in type



Non plug-in type

Caution

When using an air filter with auto-drain or manual drain, mount the filter vertically.

Manifold Specifications

Manifold	Plug-in type: VV5FS2-01□	Non plug-in type: VV5FS2-10
Wiring	Plug-in with attachment plug lead wire With terminal block With multi-connector With D-sub connector	Grommet Grommet terminal Conduit terminal DIN terminal
Applicable valve model	VFS2□00-□F	VFS2□10-□G, VFS2□10-□E VFS2□10-□T, VFS2□10-□D
Porting specifications Rc	Common SUP, Common EXH	
	2(B), 4(A) port	Side: Rc 1/8, 1/4, Bottom: Rc 1/8 (Option)
Stations	1 (P), 3(R2), 5(R1) port	Side: Rc 1/4, 1/8, Bottom: Rc 1/8 (Option) 2 to 15 stations*

* With multi-connector, or D-sub connector: 8 stations max.

Control Unit Specifications

Air filter (With auto-drain/With manual drain)	
Filtration degree	5 μm
Regulator	
Set pressure (Outlet pressure)	0.05 to 0.85 MPa
Pressure switch ⁽¹⁾	
Set pressure range: OFF	0.1 to 0.6 MPa
Differential	0.08 MPa or less
Contact	1a
Indicator light	LED (RED)
Max. switch capacity	2 VA AC, 2 W DC
Max. operating current	24 VAC/DC or less: 50 mA 100 VAC/DC: 20 mA
Air release valve (Single only)	
Operating pressure range	0.1 to 1.0 MPa

Control Unit/Option

Air release valve spacer ⁽²⁾	<Plug-in type> VVFS2000-24A-1R (D side mounting) VVFS2000-24A-1L (U side mounting)	
	<Non plug-in type> VVFS2000-24A-2R (D side mounting) VVFS2000-24A-2L (U side mounting)	
Pressure switch ⁽³⁾	IS1000P-2-1	
Blanking plate	With control unit/Filter regulator	MP2-2
	Pressure switch	MP3-2
	Release valve	AXT625-18A
Filter element	111511-5B	

- Note 1) Voltage: 24 VDC to 100 VAC
Inner voltage drop: 4 V
- Note 2) Refer to manifold option parts on page 3-8-42.
- Note 3) The non plug-in type cannot be mounted afterwards.

How to Order



Note) The manifold of plug-in type with attachment plug lead wire is applied to individual type only. Non plug-in type has no junction

VV5FS2-10-08-1-01-AP

Series VFS2000 Manifold

Base type/Electrical entry

01	Plug-in type with attachment plug lead wire
01T	Plug-in type with terminal block
01C	Plug-in type with multi-connector
01F	Plug-in type with D-sub connector
10	Non plug-in type

Connector mounting direction

Symbol	With connector	Applicable base
Nii	None	01, 01T, 10
D	D side mounting	01C, 01F
U	U side mounting	

Junction cover

Nii	Stacking type
1	Integrated type

Stations

02	2 stations
∴	∴
15*	15 stations

* Base type
01, 01T, 10: — 2 to 15 stations
01C, 01F: — 2 to 8 stations

Symbol

Symbol	Passage		Porting specifications
	P	EA, EB	B, A
1	Common	Common	Side
2*	Common	Common	Bottom
3*			Side
4*	Common	Individual	Bottom
5*			Side
6*	Individual	Common	Bottom
7*			Side
8*	Individual	Individual	Bottom

* Option
The individual specification of the P port in the composition symbol marks 3 to 8 or EA, EB ports should be taken as individual port using a block plate. Therefore, if an individual port is taken using a single SUP spacer of option or a single EXH spacer, the composition symbol mark is "1".

Air release valve coil rating

Nii	None (F, G type only)
1	100 VAC, 50/60 Hz
5	24 VDC
9	Other

Control unit type

Symbol	Nii	A	AP	M	MP	F	G	C	E
Control equipment									
Air filter with auto-drain		●	●			●			
Air filter with manual drain				●	●		●		
Regulator		●	●	●	●	●	●		
Air release valve		●	●	●	●			●	●
Pressure switch			●		●				
Blanking plate (Air release valve)							●	●	
Blanking plate (Filter, Regulator)									●
Blanking plate (Pressure switch)		●	●		●	●	●		
Number of manifold blocks required for mounting (stations)	2	2	2	2	2	2	2	2	1

Thread type

Nii	Rc
N*	NPT
T*	NPTF
F*	G

* Option

Port size

Symbol	P, EA, EB	B, A
01	Rc	Rc 1/8
02	1/4	Rc 1/4
M		Mixed

Please indicate manifold base type, corresponding valve, and option parts.

<Example>

- Plug-in type with terminal block (Manifold base) VV5FS2-01T1-091-02-MP5 1 (2 position single) VFS2100-5FZ 5 (2 position double) VFS2200-5FZ 2 * 2 stations are needed to mount control unit.
- Non plug-in type (Manifold base) VV5FS2-10-071-01-M 1 (2 position single) VFS2110-5D 5 * 2 stations are needed to mount control unit.

VK

VZ

VF

VFR

VP4

VZS

VFS

VS4

VQ7

EVS

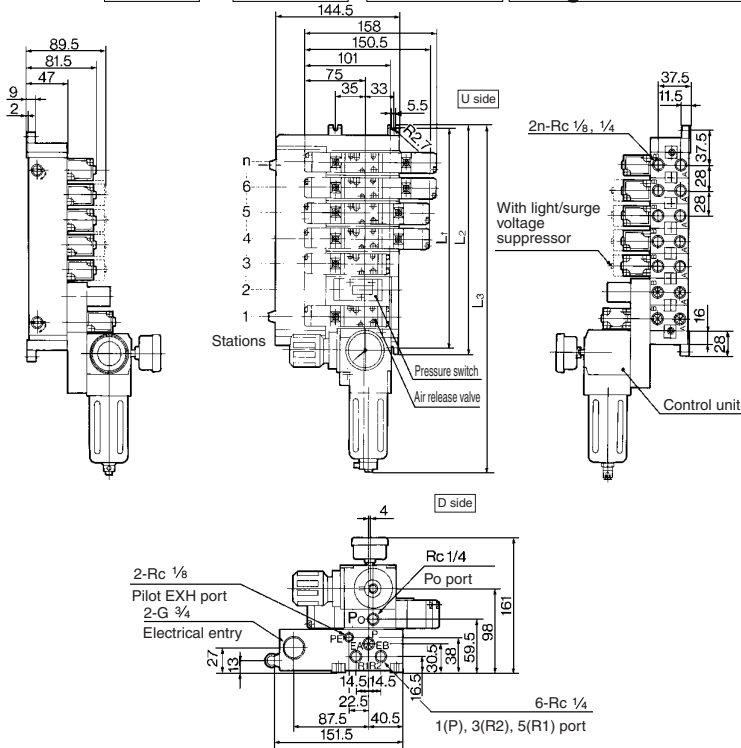
VFN

Series VFS2000

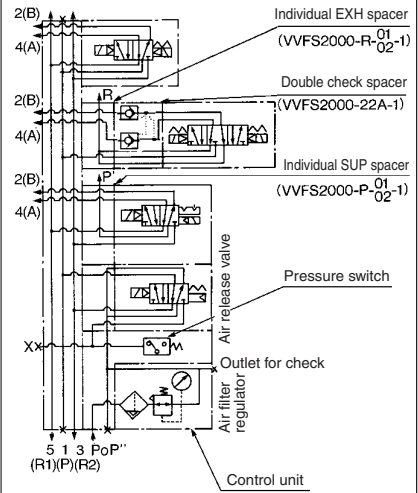
Manifold with Control Unit Plug-in type, Non plug-in type

Plug-in type:

VV5FS2-01T-Station 1- Port size- Control unit Voltage for release valve

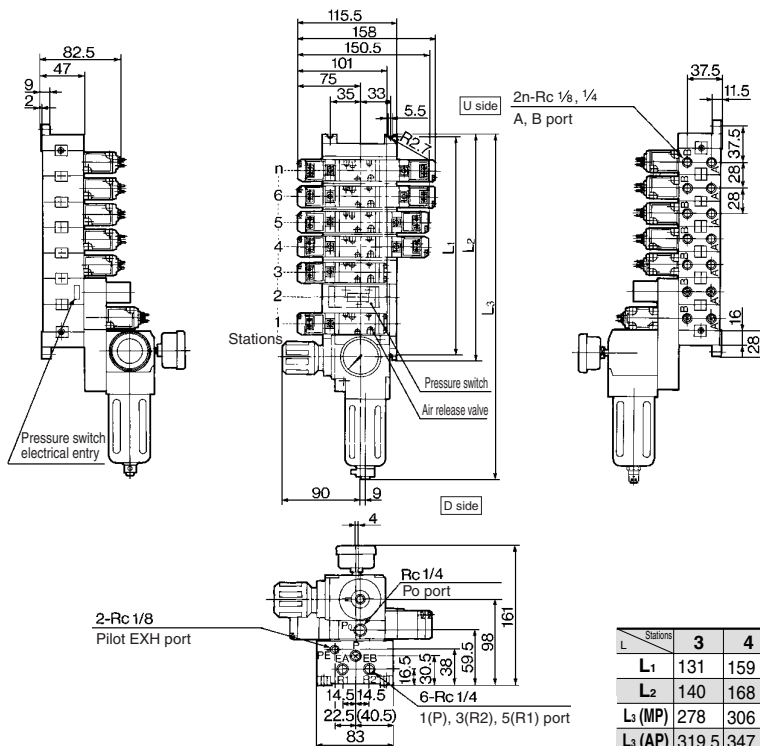


Example for manifold

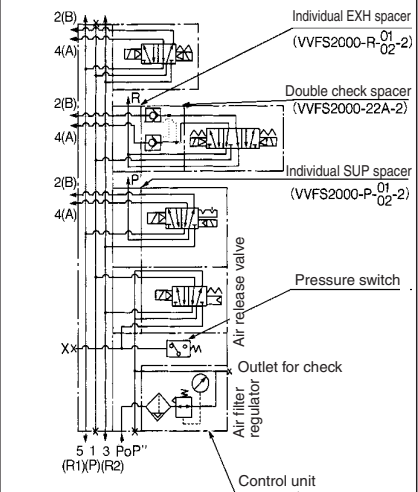


Non plug-in type:

VV5FS2-10-Station 1- Port size - Control unit Voltage for release valve



Example for manifold



n: Stations

Stations	3	4	5	6	7	8	9	10	Formula
L ₁	131	159	187	215	243	271	299	327	L ₁ = 28 x n + 47
L ₂	140	168	196	224	252	280	308	336	L ₂ = 28 x n + 56
L ₃ (MP)	278	306	334	362	390	418	446	474	L ₃ = 28 x n + 194
L ₃ (AP)	319.5	347.5	375.5	403.5	431.5	459.5	487.5	515.5	L ₃ = 28 x n + 235.5

5 Port Pilot Operated Solenoid Valve Metal Seal, Plug-in/Non Plug-in Series **VFS2000**

Dripproof Manifold (Equivalent to IP65)

Manifold Specifications

Manifold	VV5FS2-01WTB ^U	VV5FS2-01W
Wiring	Common terminal box	Attachment plug lead wire
Applicable value model	VFS2□00-□F-X54	
Porting specifications	Common SUP, Common EXH	
	2(B), 4(A) port	Side: Rc 1/8, 1/4, Bottom: Rc 1/8 (Option)
Rc	1(P), 3(R2), 5(R1) port	Side: Rc 1/4
Stations	2 to 10 stations	2 to 15 stations

How to Order

How to order manifold

VV5FS2 - 01WTBU - 08 1 - 02

**Plug-in dripproof manifold
(Equivalent to IP65)**

01WTBU	Common terminal box (U side mounting)
01WTBD	Common terminal box (D side mounting)
01W	Attachment plug lead wire

Port size

Symbol	P, R1, R2	A, B
01	Rc 1/4	Rc 1/8
02		Rc 1/4
M		Mixed

* For bottom ported, A/B port is available only with Rc 1/8.

Stations

02	2 stations
⋮	⋮
15	15 stations

Symbol

Symbol	Passage	Porting specifications
	P, R1, R2	A, B
1	Common	Side
2*		Bottom

* Option

- VK
- VZ
- VF
- VFR
- VP4
- VZS
- VFS**
- VS4
- VQ7
- EVS
- VFN

How to order valves

VFS2 1 00 □ - 5 F □ □ - X54

Symbol

1	2 position single
2	2 position double
3	3 position closed center
4	3 position exhaust center
5	3 position pressure center
6	3 position double check

Pilot type

Nil	Internal pilot
R*	External pilot

* Option

Pilot valve manual override

Nil	Non-locking push type (Flush)
A*	Non-locking push type (Extended)
B*	Locking type (Tool required)
C*	Locking type (Lever)

* Option

Option

Nil	None
Z	With light/surge voltage suppressor

Coil rated voltage

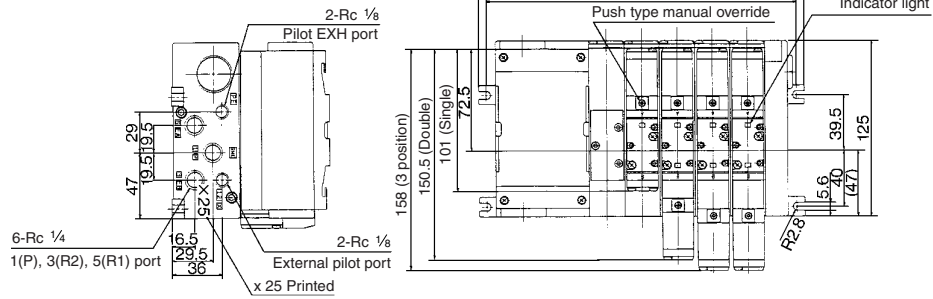
1	100 VAC, 50/60 Hz
2	200 VAC, 50/60 Hz
3*	110 to 120 VAC, 50/60 Hz
4*	220 VAC, 50/60 Hz
5	24 VDC
6*	12 VDC
7*	240 VAC, 50/60 Hz
9*	Other

* Option

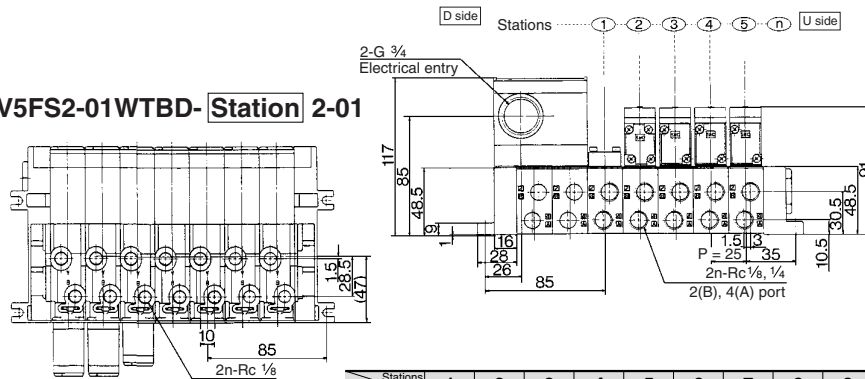
Series VFS2000

Dripproof Manifold

With common terminal box: VV5FS2-01WTB_U - Station 1- Port size



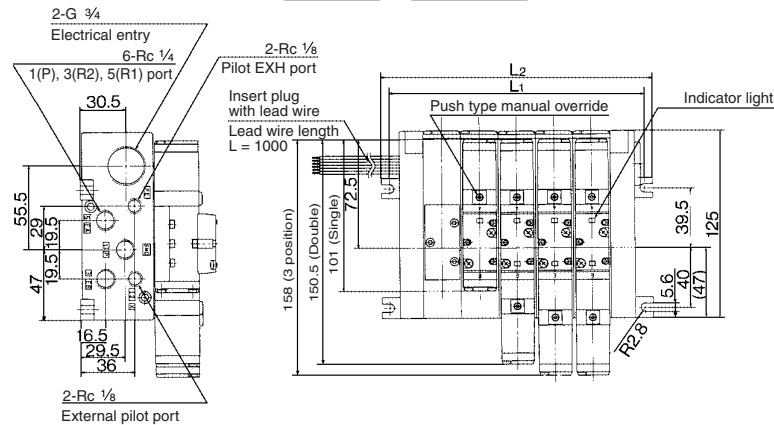
Bottom ported: VV5FS2-01WTBD - Station 2-01



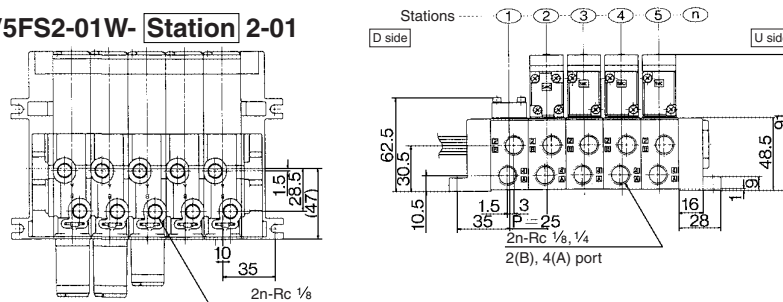
* Terminal mounting stations are not included. Indicates Solenoid valve mounting stations.

L	Stations										Formula
	1	2	3	4	5	6	7	8	9	10	
L ₁	120	145	170	195	220	245	270	295	320	345	L ₁ = 25 x n + 95
L ₂	131	156	181	206	231	256	281	306	331	356	L ₂ = 25 x n + 106

With attachment plug lead wire: VV5FS2-01W - Station 1- Port size



Bottom ported: VV5FS2-01W - Station 2-01



L	Stations															Formula
	1	2	3	4	5	6	7	8	9	10	11	12	13	14	15	
L ₁	70	95	120	145	170	195	220	245	270	295	320	345	370	395	420	L ₁ = 25n + 45
L ₂	81	106	131	156	181	206	231	256	281	306	331	356	381	406	431	L ₂ = 25n + 56