

Back

- o Flat Cable Connectors SEK
- o *har-mik*®
- o D-Sub
- o InduCom

➔ Applications

Product details

09 16 108 3101 Female insert, Han 108 DD

Series	Han DD®
Number of contacts	108 poles + PE
Size of hood/ housing	Han® 24 B
Termination	Crimp termination
Insert material	Standard material
Contacts	Order separately
Electrical data	10 A 250 V 4 kV 3
RoHS compliant	Yes

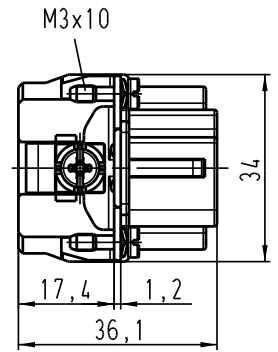
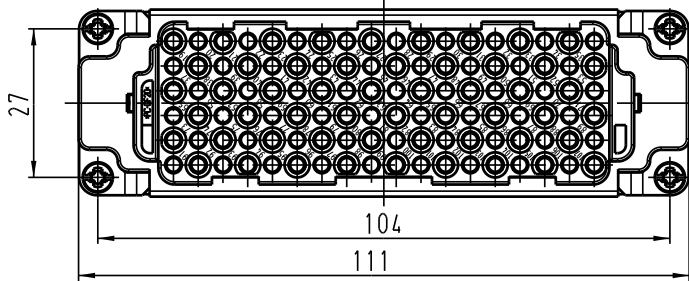
Available Downloads

Title	Format	
Data sheet	PDF	download
CAD data 2D	DXF	download
CAD data 3D	IGES	download

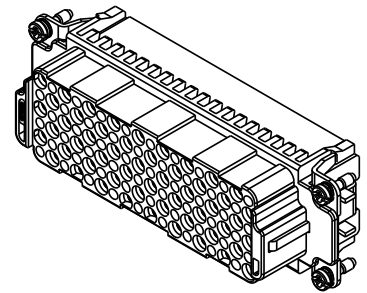
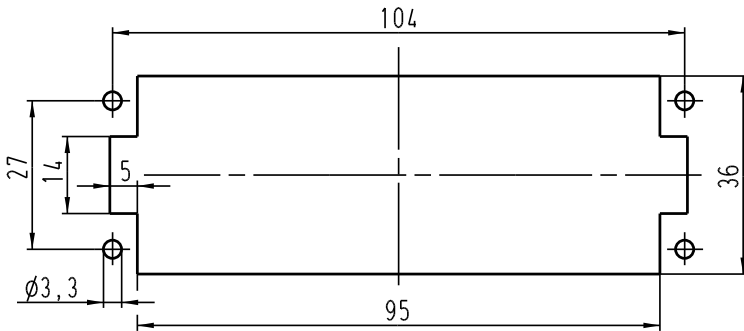
Inquiry

Alle Rechte vorbehalten / All rights reserved

5 4 3 2 1



Montageausschnitt/
panel cut out



A	All Dimensions in mm Original Size DIN A 4		Techn. Character.			Nicht tolerierte Masse / free size tolerances	
			Dat.	Name	1:1 Han 108DD-F-c Buchseneinsatz / female insert		
			Detail.	13.10.03			Ho
			Insp.				KR
			Stand.			TB 09 16 108 3101 Sub. TB 09 16 108 3101 v. 22.03.99	
410513			HARTING Electric GmbH & Co. KG D-32339 Espelkamp				
	Mod.	Dat.	Name			Blatt / page	