

Back

- o Flat Cable Connectors SEK
- o *har-mik*®
- o D-Sub
- o InduCom


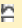
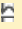
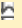
➤ Applications

Product details

09 21 015 3101 Female insert, Han 15 D

Series	Han D®, Han D® AV
Number of contacts	15 poles + PE
Size of hood/housing	Han® 10 A
Termination	Crimp termination
Insert material	Standard material
Contacts	Order separately
Electrical data	10 A 250 V 4 kV 3
RoHS compliant	Yes

Available Downloads

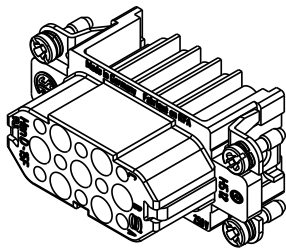
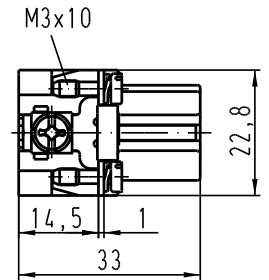
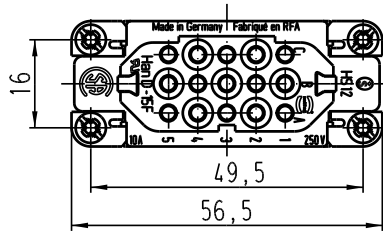
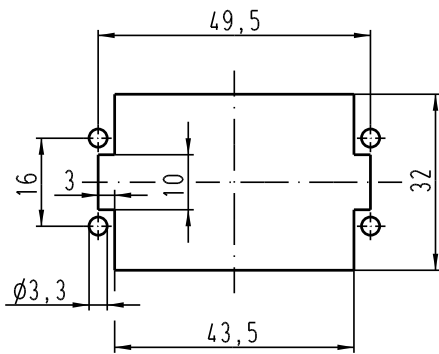
Title	Format	
Data sheet	PDF	 download
CAD data 2D	DXF	 download
CAD data 3D	IGES	 download
CAD data 3D	STEP	 download

Inquiry

Alle Rechte vorbehalten / All rights reserved

5 4 3 2 1

Montageausschnitt/
panel cut out



		All Dimensions in mm Original Size DIN A 4			Techn. Character.		Nicht tolerierte Masse! free size tolerances		
					Dat.	Name	Massstab/Scale 1:1	Han 15D-F-c Buchsenträger / female insert	
					Detail. 12.04.99 KR	Insp.			SDT.
411417	18.01.05	Loe.			Stand.				
410526	18.07.03	Ho			HARTING Electric GmbH & Co. KG D-32339 Espelkamp			TB 09 21 015 3101	
25626									Sub. TB 09 21 0.. 3101 Bl.1/2 v. 01.03.93
Mod.	Dat.	Name						Blatt/ page	