

8600 Series Microminiature Pushbutton Switches



Features/Benefits

- Available with overtravel
- Normally closed models available
- Microminiature size ideal for applications where space is limited
- RoHS compliant

Typical Applications

- Detection
- Telecommunications and networking equipment
- Computers and peripherals



Specifications

CONTACT RATING: Q contact material (8631, 8632 Models): 500 mA @ 120 V AC or 28 V DC; 250 mA @ 250 V AC; (8633 Model): 250 mA @ 120 V AC or 28 V DC; 125 mA @ 250 V AC. See page A-73 for additional ratings.

ELECTRICAL LIFE: 8631 and 8633 MODELS: 250,000 actuations at full load. 8632 MODEL: 100,000 actuations at full load.

CONTACT RESISTANCE: Below 30 mΩ typ. initial @ 2-4 V DC, 100 mA, for both silver and gold plated contacts.

INSULATION RESISTANCE: 109 Ω min.

DIELECTRIC STRENGTH: 500 Vrms min. @ sea level.

OPERATING TEMPERATURE: -30°C to 65°C.

SOLDERABILITY: Per MIL-STD-202F method 208D, or EIA RS-186E method 9.

Materials

CASE: Glass filled phenolic or diallyl phthalate (DAP), (UL94V-0).

PLUNGER: Glass filled nylon (UL94V-0), black standard.

BUSHING: Brass, nickel plated.

CONTACTS: Q contact material: Coin silver, silver plated. See page A-73 for additional contact materials.

TERMINALS: 8631, 8632 MODELS: Copper alloy, silver plated. 8633 MODEL: Q contact material: Coin silver. See page A-73 for additional contact materials.

TERMINAL SEAL: 8633 MODEL: Epoxy. 8631, 8632 MODELS: Terminals insert molded.

HARDWARE: Nut: Brass, nickel plated.

NOTE: Any models supplied with Q, B or G contact material are RoHS compliant.

NOTE: Specifications and materials listed above are for switches with standard options. For information on specific and custom switches, consult Customer Service Center.

Build-A-Switch

To order, simply select desired option from each category and place in the appropriate box. Available options are shown and described on pages A-72 and A-73. For additional options not shown in catalog, consult Customer Service Center.

Switch Function	Termination	Contact Material	Seal	Plunger Color
8631 SPST Off-Mom.	Z Solder lug	B Gold	D No epoxy	2 Black
8632 SPST Off-Mom.	C PC Thru-hole	Q Silver	E Epoxy	3 Red
8633 SPST On-Mom.		G Gold over silver		



Dimensions are shown: Inches (mm)
Specifications and dimensions subject to change



8600 Series Microminiature Pushbutton Switches

SWITCH FUNCTION



A

Pushbutton

NO. POLES	MODEL NO.	SWITCH FUNCTION		TOTAL TRAVEL	ACTUATION FORCE	SCHEMATIC
		POS. 1	POS. 2			
SP	8631	OFF	MOM.	.040 (1,02) TYP.	5 oz (140g) TYP.	N.O.
SPST <p>Part number shown: 8631ZQD2</p> <p>Terminals Insert Molded</p>						
SP	8632	OFF	MOM.	.106 (2,69) TYP. with overtravel .024 (0,61) TYP.	6.25 oz (177g) TYP.	N.O. with overtravel
SPST <p>Part number shown: 8632ZQD2</p> <p>Terminals Insert Molded</p>						
SP	8633	ON	MOM.	.048 (1,22) TYP.	5 oz (140g) TYP.	N.C.
SPST <p>Part number shown: 8633ZQE2</p>						

MOM. = Momentary

NOTE: Caps available for plunger options, see page A-73.

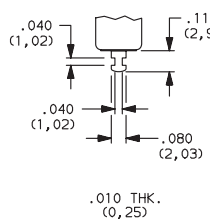
TERMINATIONS



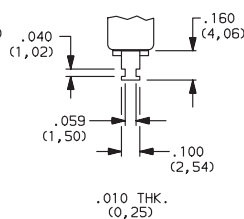
Z SOLDER LUG

C PC THRU-HOLE

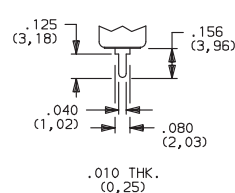
8631, 8632 models only.



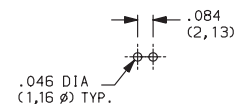
8633 models only.



8631, 8632 models only.



PC MOUNTING



Dimensions are shown: Inches (mm)
Specifications and dimensions subject to change

C&K

8600 Series Microminiature Pushbutton Switches



A

Pushbutton

CONTACT MATERIAL

OPTION CODE	RoHS COMPLIANT *	RoHS COMPATIBLE *	CONTACT MATERIAL	TERMINAL PLATING	RATINGS	
B	YES	YES	GOLD ¹	GOLD ¹	LOW LEVEL/ DRY CIRCUIT	0.4 VA MAX. @ 20 V AC OR DC MAX.
Q	YES	YES	SILVER ⁴	SILVER ⁵	POWER	8631, 8632 MODELS: 500 mA @ 120 V AC OR 28 V DC; 250 mA @ 250 V AC. 8633 MODELS: 250 mA @ 120 V AC OR 28 V DC; 125 mA @ 250 V AC.
G	YES	YES	GOLD OVER SILVER ⁴	GOLD ³	LOW LEVEL/DRY CIRCUIT OR POWER	0.4 VA MAX @ 20 V AC OR DC MAX. OR 8631, 8632 MODELS: 500 mA @ 120 V AC OR 28 V DC; 250 mA @ 250 V AC. 8633 MODELS: 250 mA @ 120 V AC OR 28 V DC; 125 mA @ 250 V AC.

* Note: See Technical Data section of this catalog for RoHS compliant and compatible definitions and specifications.

¹ CONTACTS & TERMINALS: Copper alloy, with gold plate over nickel plate.


² CONTACTS: Coin silver, with gold plate over nickel plate.

³ TERMINALS: Copper alloy, with gold plate over nickel plate.
8633 model only: Coin silver, with gold plate over nickel plate.

⁴ CONTACTS: Coin silver, silver plated.

⁵ TERMINALS: Copper alloy, silver plated. 8633 model only: coin silver.

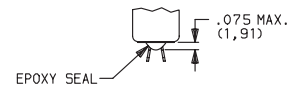
NOTE: Any models supplied with Q, B or G contact material are RoHS compliant.

8631, 8632 models  with all options when ordered with G or Q contact material.
Q contact material standard with C, Z terminations.

SEAL

D NO EPOXY SEAL

E EPOXY SEAL



Not available on 8633 model.
Standard on 8631, 8632 models.

Not available on 8631, 8632 models.
Standard on 8633 model only.

PLUNGER COLOR

OPTION CODE	COLOR
2	BLACK
3	RED

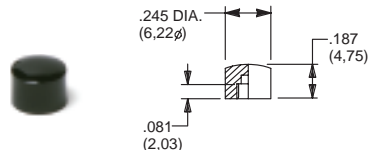
AVAILABLE HARDWARE

Cap

PART NO.

785101000 WHITE
785102000 BLACK
785103000 RED

Material: Nylon
Finish: Gloss



NOTE: Other cap colors available, consult Customer Service Center.

C&K



Dimensions are shown: Inches (mm)
Specifications and dimensions subject to change