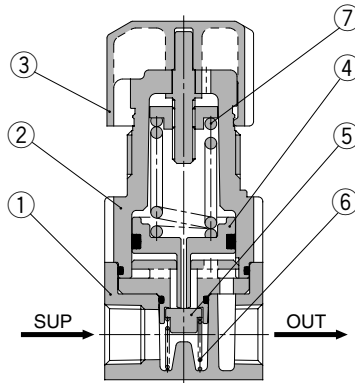
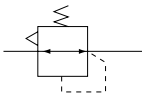


Series ARX20

Construction

JIS Symbol



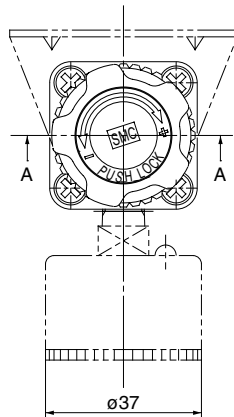
Component Parts

No.	Description	Material	Note
①	Body	ADC	
②	Bonnet	POM	

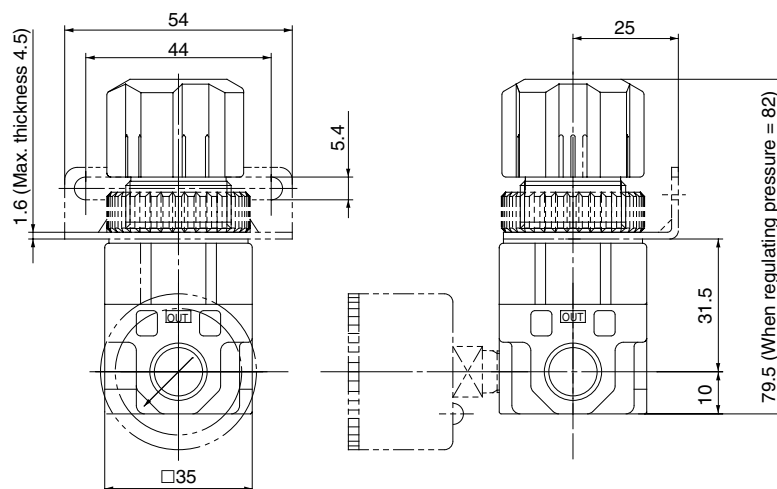
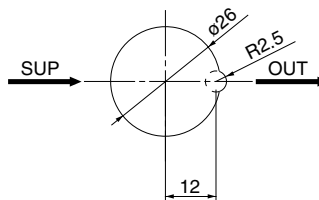
Replacement Parts

No.	Description	Material	Part no.
③	Handle	POM	1348102#1
④	Piston assembly	POM, NBR	1348104A
⑤	Valve	Brass, NBR	1348105
⑥	Valve spring	Stainless steel	1348109
⑦	Adjusting spring	Steel wire	1348108 (For 0.85 MPa) 1348108-1 (For 0.3 MPa)

Dimensions



Panel cutout dimensions

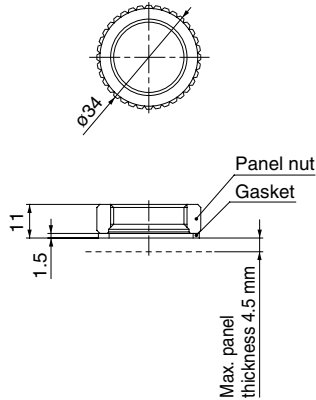


Option

Panel Nut

Part no.	1348110A
Material	POM, NBR (Gasket)

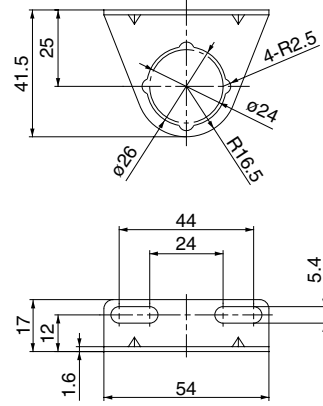
Dimensions



Bracket

Part no.	1348112
Material	SPCC (Black zinc chromated)

Dimensions



- F.R.L.
- AV
- AU
- AF
- AR**
- IR
- VEX
- AMR
- ITV
- IC
- VBA
- VE□
- VY1
- G
- PPA
- AL

* Install the gasket underneath the panel and bracket (bonnet side).
Tighten the panel nut by hand without the use of tools.

⚠ Precautions

Be sure to read before handling. Refer to pages 14-21-3 to 14-21-4 for Safety Instructions and Common Precautions.

Design and Selection

⚠ Warning

1. **Confirm the regulating pressure range.**
Be sure to install safety devices in locations where output pressure above the regulating pressure range can lead to damage or malfunction of equipment in the outlet pressure side.
2. **Residual pressure relief without supply pressure.**
In cases where the supply pressure is removed with the downstream pressure in a low pressure setting state, it may not be possible to eliminate the downstream pressure (residual pressure relief). Provide a residual pressure relief circuit for cases in which reliable elimination of downstream pressure must be performed.

Mounting

⚠ Caution

1. **To set the correct pressure**
 - 1) Set the pressure by increasing from a lower pressure to the desired setting, and lock the handle after the pressure is set.
 - 2) Make connections after confirming the "SUP" mark which indicates the air inlet. Reversed connections will cause malfunction.