

Switch Language

English

Need Assistance?

Contact Us
Find a Distributor
Order Samples
Tech Library

Printer-friendly page

Email this page

[Home](#) [Crimp Housings](#) **Datasheet**

Part Number: 0039012165

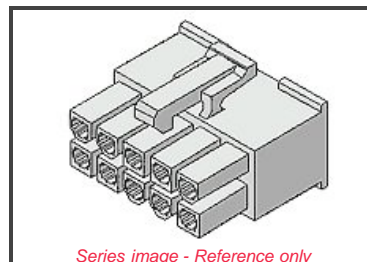
Status: Active **Overview: Mini-Fit Jr.™**

Description: 4.20mm (.165") Pitch Mini-Fit Jr.™ Receptacle Housing, Dual Row, UL 94V-0, 16 Circuits

Documents:

Note - Please disable browser pop-up blockers for documents on www.molex.com

[Drawing \(PDF\)](#) [3D Model](#)
[Test Summary \(PDF\)](#) [Related Catalog Page \(PDF\)](#)



Order Products:

[Check Distributor Inventory](#) [Add to My Parts](#)
[Request Samples](#)

Part Detail: [\(show all\)](#)

[General](#) [Physical](#) [Electrical](#) [Material Info](#)

General

Product Family Crimp Housings
Series [5557](#)
Overview [Mini-Fit Jr.™](#)
Product Name Mini-Fit Jr.™

Physical

Breakaway No
Circuits (maximum) 16
Color - Resin Ivory
Flammability 94V-0
Flammability 94V-2
Gender Female
Material - Resin Nylon
Number of Rows 2
Packaging Type Bag
Panel Mount No
Pitch - Mating Interface (in) 0.165 In
Pitch - Mating Interface (mm) 4.20 mm
Pitch - Term. Interface (in) 0.165 In
Pitch - Term. Interface (mm) 4.20 mm
Polarized to Mating Part Yes
Stackable No
Temperature Range - Operating -40°C to +105°C

Electrical

CSA LR19980
TUV R75142
UL E29179

Material Info

Old Part Number 5557-16R-210

EU RoHS **China RoHS**
ELV and RoHS Compliant



Need more information on product compliance?

Email productcompliance@molex.com

Please visit the [Contact Us](#) section for any non-product compliance questions.

Search Parts in this Series

[5557 Series](#)

Mates With

[5559d](#), [5566vw](#), [5566vwo](#), [5569rdf](#),
[5569rdp](#), [43810a](#), [43810b](#), [43810c](#),
[43810d](#), [44068a](#), [44068b](#), [44068c](#),
[44068d](#), [44281](#), [44472dw](#), [44472dwo](#),
[87427](#), [87427r](#), [87427rf](#), [42404](#),
[44474](#), [42440](#), [43879](#), [42475](#)

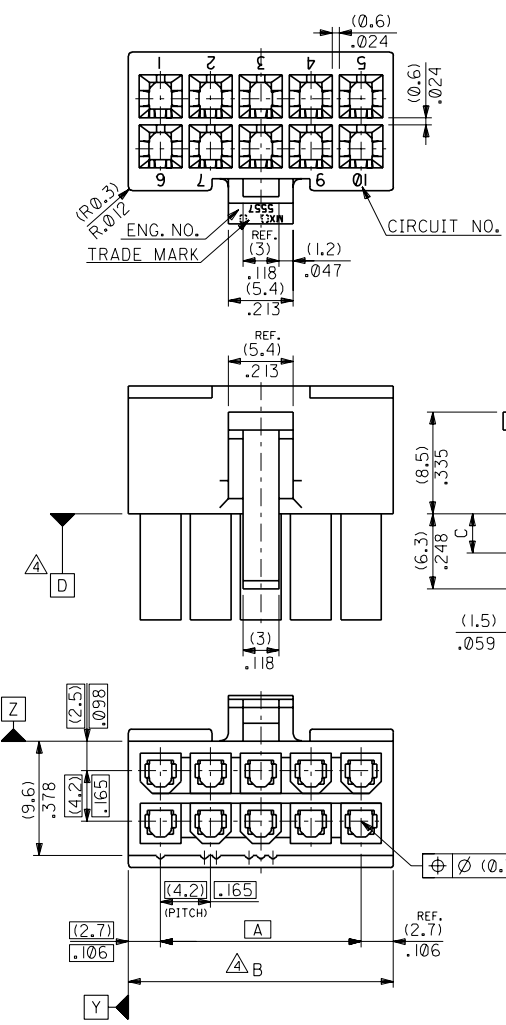
Use With

[5556](#), [44476](#), [44485](#), [41995](#)

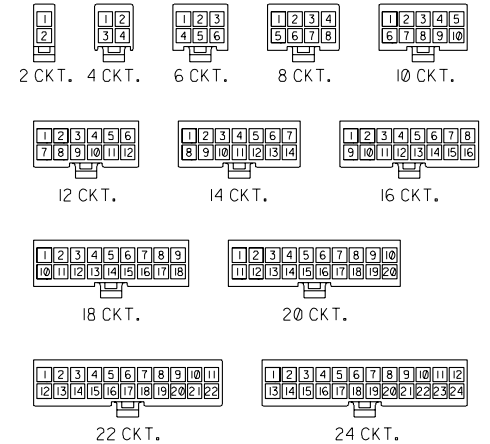
ENG. NO. SD-5557-NR-210
EDP NO. 39-01-2**5

ALL DIMENSIONS IN METRIC DO NOT SCALE DRAWING

8 7 6 5 4 3 2 1



NOTES
 1. TERMINAL : 5556 SERIES
 2. MATE WITH : 5559 SERIES
 5566 SERIES
 5569 SERIES
 3. (METRIC) VALUES SHOWN GOVERN OVER ENGLISH CONVERSION VALUES.
 △ TO BE MEASURED AT POSITION OF □ SURFACE.



CIRCUIT SIZE LAYOUT (SCALE: 1-1)

(3.6)	(47.4)	2.031	(42)	1.819	39-01-2245	5557-24R-210	24
.142	(43.2)	1.866	(37.8)	1.654	-2225	-22R-210	22
	(39)	1.701	(33.6)	1.488	-2205	-20R-210	20
	(34.8)	1.535	(29.4)	1.323	-2185	-18R-210	18
	(30.6)	1.37	(25.2)	1.158	-2165	-16R-210	16
	(26.4)	1.205	(21)	.992	-2145	-14R-210	14
(3.3)	(22.2)	1.039	(16.8)	.827	-2125	-12R-210	12
.129	(18)	.874	(12.6)	.661	-2105	-10R-210	10
	(13.8)	.709	(8.4)	.496	-2085	-08R-210	8
	(9.6)	.543	(4.2)	.331	-2065	-06R-210	6
	(5.4)	.378		.165	-2045	-04R-210	4
		.213			39-01-2025	5557-02R-210	2

材料 MATERIAL		66NYLON (UL94V-0)	
仕上げ FINISH		---	
適用電線範囲 WIRE RANGE		---	
被覆外径 INS. RANGE		---	
DRAWN BY 90/2/22		CHK'D BY 97/0/08	
S.MOCHIZUKI		M.FUKUSHIMA	
APP'D BY 97/0/08		尺 度 SCALE 3-1	
M.FUKUSHIMA			

角度 ANGLE	±30
30以上 OVER	±8.4
10以上 未過 UNDER	±3.3
10以下 未過 UNDER	±0.2
一般公差 GENERAL TOLERANCES	

F	REVISED (JCT0586)	S.A.M.F	97/1/8
E	REVISED (J20158)	H.H	92/4/28
D	REVISED (J01160)	H.H	90/1/8
C	REVISED & REDRAWN (J00192)	S.M	90/2/22
LTR	REVISION RECORD	DR. CHK.	日付 DATE

EDP. NO.	39-01-2**5
ENG. NO.	SD-5557-NR-210
TITLE 名称	NEW MINI FIT CONN. REC. HOUSING

THIS DRAWING CONTAINS INFORMATION THAT IS PROPRIETARY TO MOLEX/JAPAN AND SHOULD NOT BE USED WITHOUT WRITTEN PERMISSION
 本図面は日本モレックス(株)の所有する情報を含むもので 当社の許可なく複製を禁止する。 MXJ-8