

Back

- o Flat Cable Connectors SEK
- o *har-mik*®
- o D-Sub
- o InduCom


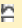
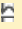
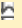
➤ Applications

Product details

09 21 040 3101 Female insert, Han 40 D

Series	Han D®, Han D® AV
Number of contacts	40 poles + PE
Size of hood/housing	Han® 16 B
Termination	Crimp termination
Insert material	Standard material
Contacts	Order separately
Electrical data	10 A 250 V 4 kV 3
RoHS compliant	Yes

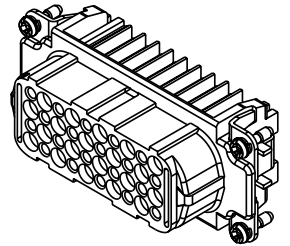
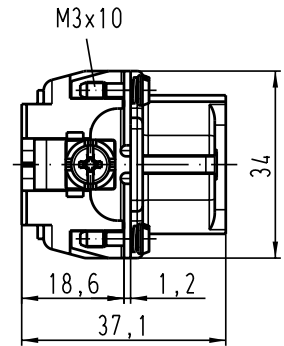
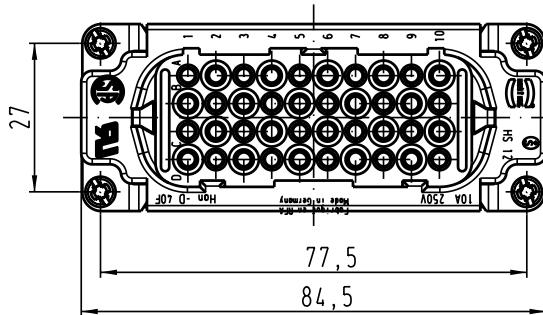
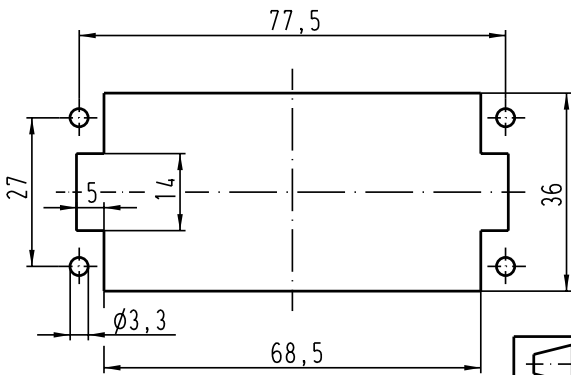
Available Downloads

Title	Format	
Data sheet	PDF	 download
CAD data 2D	DXF	 download
CAD data 3D	IGES	 download
CAD data 3D	STEP	 download

Inquiry

Alle Rechte vorbehalten/ All rights reserved

Montageausschnitt/
panel cut out



All Dimensions in mm Original Size DIN A 4		Techn. Character.			Nicht tolerierte Masse! free size tolerances		
			Dat.	Name	Massestab/Scale	Han 40D-F-c Buchsenträger / female insert	
			Detail.	12.04.99 KR			
			Insp.	SDT.			
			Stand.		1:1	TB 09 21 040 3101 Sub. TB 09 21 0... 3101 Bl. 2/2 v. 09.12.92	
410526	18.07.03	Ho	HARTING Electric GmbH & Co. KG				
25626			D-32339 Espelkamp				
Mod.	Dat.	Name				Blatt/ page	