

Back

- o Flat Cable Connectors SEK
- o *har-mik*®
- o D-Sub
- o InduCom


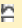
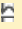
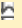
➤ Applications

Product details

09 21 040 3001 Male insert, Han 40 D

Series	Han D®, Han D® AV
Number of contacts	40 poles + PE
Size of hood/housing	Han® 16 B
Termination	Crimp termination
Insert material	Standard material
Contacts	Order separately
Electrical data	10 A 250 V 4 kV 3
RoHS compliant	Yes

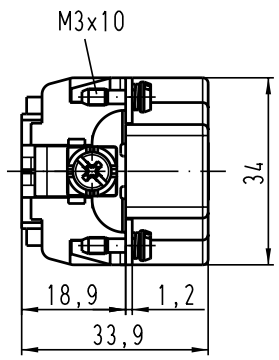
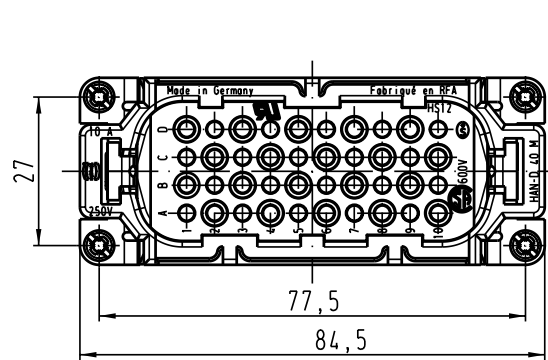
Available Downloads

Title	Format	
Data sheet	PDF	 download
CAD data 2D	DXF	 download
CAD data 3D	IGES	 download
CAD data 3D	STEP	 download

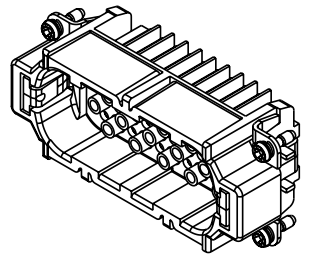
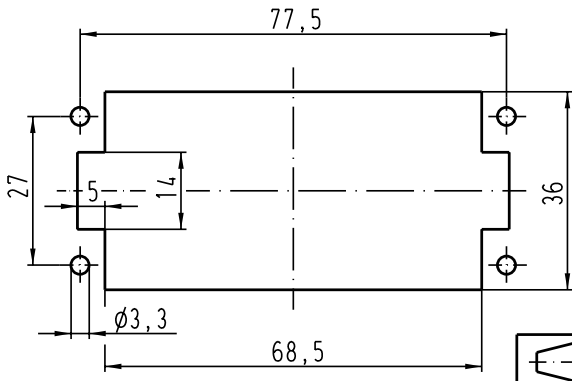
Inquiry

Alle Rechte vorbehalten / All rights reserved

5 4 3 2 1



Montageausschnitt/
panel cut out



	All Dimensions in mm Original Size DIN A 4			Techn. Character.			Nicht tolerierte Masse / free size tolerances				
					Dat.	Name	Massstab / Scale 1:1	Han 40D-M-c Stifteinsatz / male insert			
					Detail.	12.04.99 KR					
					Insp.	SDT.					
					Stand.						
410526	18.07.03	Ho	HARTING Electric GmbH & Co. KG				TB 09 21 040 3001			Blatt / page	
25626			D-32339 Espelkamp				Sub. TB 09 21 0... 3001 Bl. 2/2 v. 09.12.92				
Mod.	Dat.	Name									