

Back

- o Flat Cable Connectors SEK
- o *har-mik*®
- o D-Sub
- o InduCom


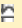
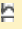
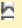
➔ Applications

Product details

09 21 025 3101 Female insert, Han 25 D

Series	Han D®, Han D® AV
Number of contacts	25 poles + PE
Size of hood/housing	Han® 16 A
Termination	Crimp termination
Insert material	Standard material
Contacts	Order separately
Electrical data	10 A 250 V 4 kV 3
RoHS compliant	Yes

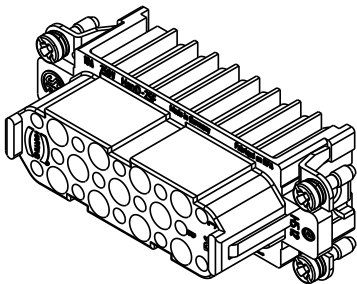
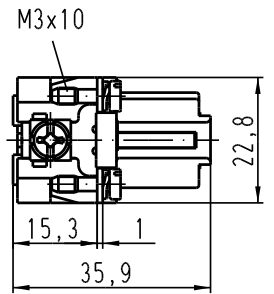
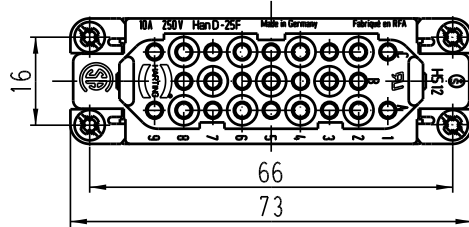
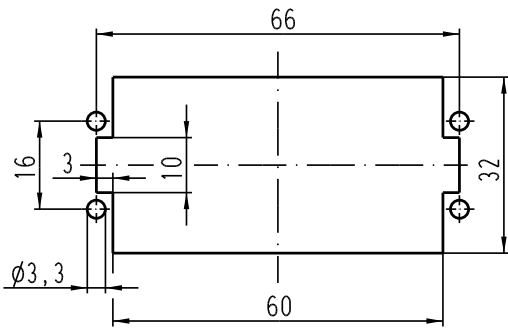
Available Downloads

Title	Format	
Data sheet	PDF	 download
CAD data 2D	DXF	 download
CAD data 3D	IGES	 download
CAD data 3D	STEP	 download

Inquiry

Alle Rechte vorbehalten/ All rights reserved

Montageausschnitt/
panel cut out



All Dimensions in mm Original Size DIN A 4		Techn. Character.			Nicht tolerierte Masse/ free size tolerances	
			Dat.	Name	Massestab/Scale	Han 25D-F-c Buchsenträger / female insert
			Detail.	12.04.99 KR		
			Insp.	SDT.		
411417	18.01.05	Loe.	Stand.		1:1	TB 09 21 025 3101 Sub. TB 09 21 0... 3101 Bl.1/2 v. 01.03.93
410526	18.07.03	Ho				
25626						
Mod.	Dat.	Name	HARTING Electric GmbH & Co. KG D-32339 Espelkamp			Blatt/ page /