

MICRO SWITCH

FREEPORT, ILLINOIS, U.S.A.
A DIVISION OF HONEYWELL

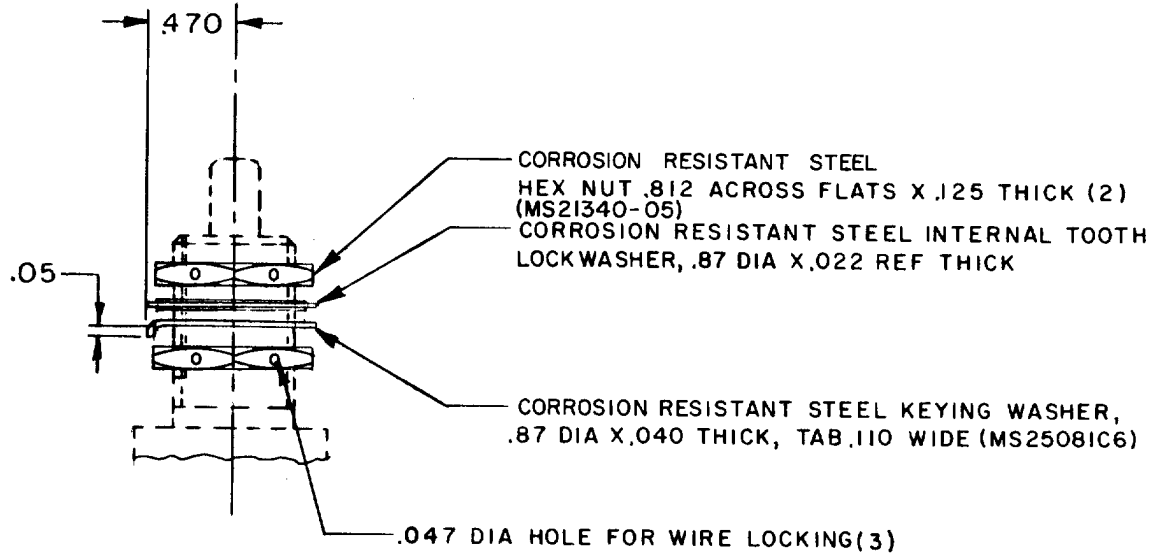
FED. MFG. CODE 91929

PACKET

CATALOG LISTING

19PA13

THIS DRAWING COVERS A PROPRIETARY ITEM AND IS THE PROPERTY OF MICRO SWITCH, A DIVISION OF HONEYWELL. THIS DRAWING IS NOT TO BE COPIED OR USED WITHOUT THE APPROVAL OF MICRO SWITCH.



NOTE -

- 1 - PARTS FURNISHED UNASSEMBLED AS A PACKET
- 2 - THIS PACKET MAY BE USED WITH ANY FAMILY OF SWITCHES WHICH HAVE 5/8-24 UNEF-2A THREADED BUSHING

SCALE FULL	
DO NOT SCALE PRINT	
UNLESS OTHERWISE NOTED	
DIMENSIONS ARE IN INCHES	
TOLERANCES ARE:	
ONE PLACE	(.0) ±.030
TWO PLACE	(.00) ±.015
THREE PLACE	(.000) ±.003
ANGLE	±
WEIGHT	

0-50378-2A
 DRAWN
 S R H 24 JUN 70
 CHECK
 L S D 24 JUN 70
 CHECK
 JUN 70
 CHECK
 24 JUN 70
 CHECK
 REVISIONS

A	PR-4732
J A L	21 JAN 75
B	CO 47483
S L B	20 MAR 80
C	CO 59066
T M M	22 FEB 86

 ISSUE X4
 DRAWING NUMBER M
 19PA13
 REPLACES PR-4732