

# MICRO SWITCH

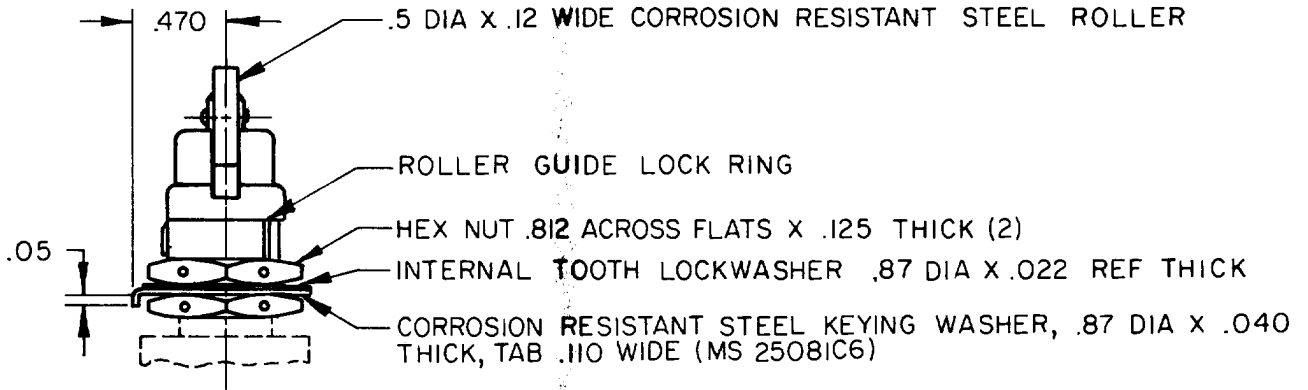
FREEPORT, ILLINOIS, U S A  
A DIVISION OF HONEYWELL INC.

FED. MFG. CODE 91929

# PACKET

CATALOG LISTING  
**19PA115-EN**

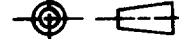
THIS DRAWING COVERS A PROPRIETARY ITEM AND IS THE PROPERTY OF MICRO SWITCH, A DIVISION OF HONEYWELL. THIS DRAWING IS NOT TO BE COPIED OR USED WITHOUT THE APPROVAL OF MICRO SWITCH.



### NOTES

- 1 - PARTS FURNISHED UNASSEMBLED AS A PACKET
- 2 - THIS PACKET MAY BE USED WITH ANY FAMILY OF SWITCHES WHICH HAVE 5/8 - 24 UNEF-2A THREADED BUSHING

THIRD ANGLE PROJECTION



SCALE FULL

DO NOT SCALE PRINT

UNLESS OTHERWISE SPECIFIED TOLERANCES ARE		
ONE PLACE	(.0)	± .030
TWO PLACE	(.00)	± .015
THREE PLACE	(.000)	± .005
ANGLES		±

19PA115-EN

M

DRAWING NUMBER

ISSUE

REPLACES

RELEASE NO. PR-16306

CHECK

CHECK

Z4445 RB

TSK

CHECK

MAR 88

S. J. S.

DRAWN

FO-92880-001