

MICRO SWITCH

A DIVISION OF MINNEAPOLIS-HONEYWELL REGULATOR COMPANY
FREDERICK, ILLINOIS
FED. MFR. CODE 91929

ACTUATOR-SWITCH

CATALOG LISTING

JX-58

JX-58

M

DRAWING NUMBER

8

8

8

8

8

8

8

8

8

8

8

8

8

8

8

8

8

8

8

8

8

8

8

8

8

8

8

8

REPLACES

RELEASE NO. SR 9424

CHECK 12 SEP 60

CHECK 17 APR 68

CHECK 19 APR 68

CHECK 14 SEP 05

CHECK 14 SEP 05

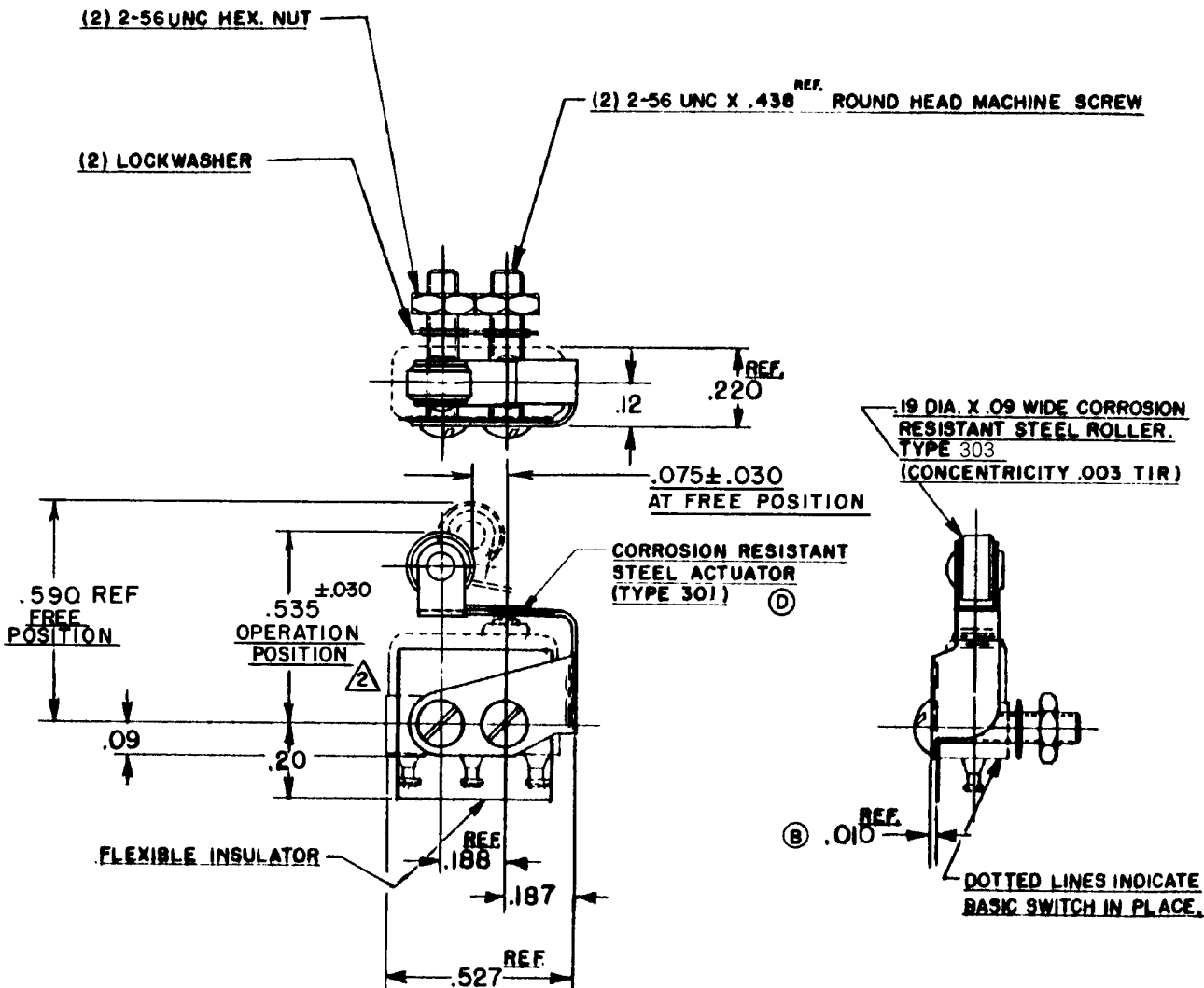
CHECK 14 SEP 05

CHECK 14 SEP 05

CHECK 14 SEP 05

CHECK 14 SEP 05

CHECK 14 SEP 05



NOTE -

- SCREWS, NUTS, LOCKWASHERS AND INSULATOR FURNISHED UNASSEMBLED,
- △ SLIGHT ROTATION BETWEEN BASIC AND ACTUATOR MAY BE NECESSARY TO OBTAIN OPERATING POSITION

THIS DRAWING COVERS A PROPRIETARY ITEM AND IS THE PROPERTY OF MICRO SWITCH, A DIVISION OF MINNEAPOLIS-HONEYWELL REGULATOR CO. THIS DRAWING IS NOT TO BE COPIED OR USED WITHOUT THE APPROVAL OF MICRO SWITCH.

CHARACTERISTICS WITH 15X1-T BASIC SWITCH INSTALLED

OPERATING FORCE	-----12 OZ MAX
RELEASE FORCE	----- 2 OZ MIN
DIFFERENTIAL TRAVEL	----- .015 MAX
OVERTRAVEL	----- .015 MIN

ELECTRICAL DATA

CONTACT ARRANGEMENT	BREAK DISTANCE
---------------------	----------------

SCALE 2 TO 1

DO NOT SCALE PRINT

UNLESS OTHERWISE SPECIFIED
DIMENSIONS ARE IN INCHES
TOLERANCES ARE:
ONE PLACE (.0) ±.030
TWO PLACE (.00) ±.015
THREE PLACE (.000) ±.005
ANGLES ±

WEIGHT

FO-50378

DRAWN

LSD 9 SEP 60

CHECK 14 SEP 05

CHECK 14 SEP 05

CHECK 19 APR 68

CHECK 17 APR 68

CHECK 12 SEP 60

CHECK 12 SEP 60

RELEASE NO. SR 9424

REPLACES