

RB SERIES

RELAY SOCKETS



DESCRIPTION

8 and 11 Pin Octal Sockets

ELECTRICAL RATING

- RB08, RB08-PC - 600 Volts, 10 Amps
- RB11, RB11-PC - 300 Volts, 10 Amps

CONSTRUCTION

- Contacts** • Brass, Nickel Plated
- Screws** • 6 - 32 x 5/16" Steel, Zinc Plated; Pressure Clamp Wire Range #12-#22 Solid or Stranded
- Molding** • Break Resistant Thermoplastic

AGENCY APPROVALS

• UL recognized, File No. E60008



• CSA certified, File No. LR29513



ORDERING CODE

| PART NO. | DESCRIPTION | TERMINAL TYPE |
|----------|-----------------------------------|-----------------------|
| RB08 | DPDT, 8 Pin Octal (Fig. 1) | Binder Head Screws |
| RB08-PC | DPDT, 8 Pin Octal (Fig. 1) | Pressure Clamp Screws |
| RB11 | 3PDT, 11 Pin Octal Style (Fig. 2) | Binder Head Screws |
| RB11-PC | 3PDT, 11 Pin Octal Style (Fig. 2) | Pressure Clamp Screws |



CUSTOM CONNECTOR

Fig. 1

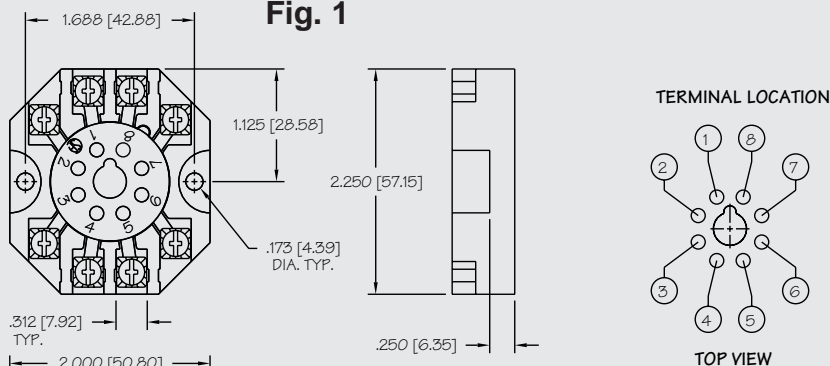


Fig. 2

