

Free eNewsletter

Enter your E-mail



Shop By Type

Cable Assemblies

Adapters

Connectors

Rack Panels

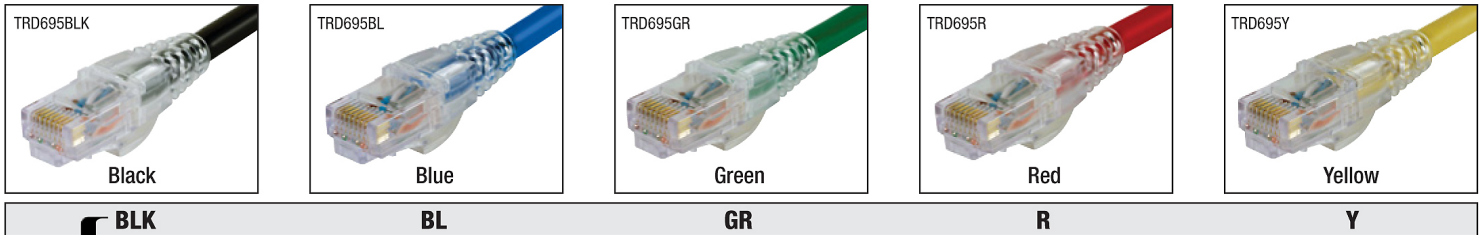
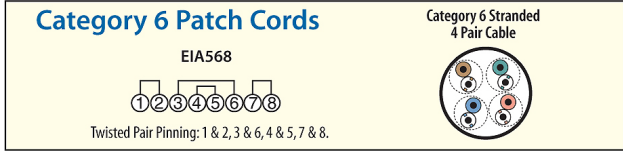
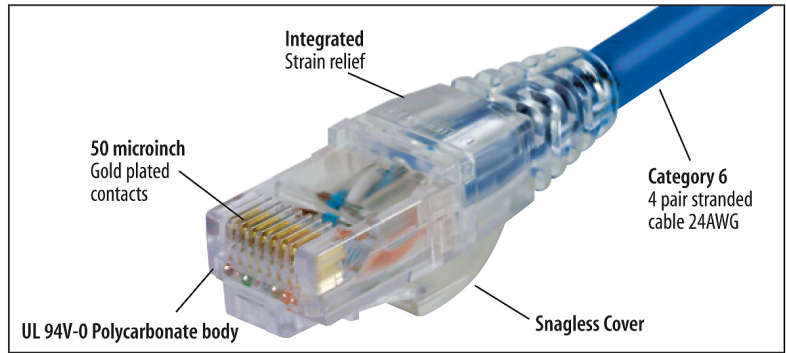
You Are Here: [Home](#) > [Modular](#) > [Adapters, Couplers, Splitters](#) > [Modular Couplers](#) > [ECF504- C, SC](#) > **ECF504-C6**

Category 6 Unshielded RJ45 (8x8) Deluxe Panel Coupler Kit

L-com's premium line of Modular Couplers combines innovative design with an affordable price. With a solid die-cast metal mounting frame, these unique coupler kits allow panel mounting in virtually any panel thickness. Designed to

RoHS Compliant Premium Category 6 RJ45 Hi-Speed Network Patch Cables

Realistic pricing and high quality is what makes L-com's Category 6 Patch Cables the right choice. Made with high performance 4-Pair Category 6 cable and Stewart snagless plugs, these cables are ready to be installed in your network. Affordability and peace of mind are assured when choosing L-com's patch cables. Large volume OEM requests are welcomed with this series. Contact us today for all your patch cord needs.



Ordering is easy, add the desired color code to the part number. Ex: TRD695BLK-1

| Item # | Description | Length | 1-9 | 10-24 | 25-99 | 100-249 | 250-499 |
|-----------------|-------------------------------------|----------|-----|-------|-------|---------|---------|
| TRD695 ___ -1 | Category 6 Patch Cable, RJ45 / RJ45 | 1.0 ft | | | | | |
| TRD695 ___ -3 | Category 6 Patch Cable, RJ45 / RJ45 | 3.0 ft | | | | | |
| TRD695 ___ -5 | Category 6 Patch Cable, RJ45 / RJ45 | 5.0 ft | | | | | |
| TRD695 ___ -7 | Category 6 Patch Cable, RJ45 / RJ45 | 7.0 ft | | | | | |
| TRD695 ___ -10 | Category 6 Patch Cable, RJ45 / RJ45 | 10.0 ft | | | | | |
| TRD695 ___ -14 | Category 6 Patch Cable, RJ45 / RJ45 | 14.0 ft | | | | | |
| TRD695 ___ -25 | Category 6 Patch Cable, RJ45 / RJ45 | 25.0 ft | | | | | |
| TRD695 ___ -50 | Category 6 Patch Cable, RJ45 / RJ45 | 50.0 ft | | | | | |
| TRD695 ___ -75 | Category 6 Patch Cable, RJ45 / RJ45 | 75.0 ft | | | | | |
| TRD695 ___ -100 | Category 6 Patch Cable, RJ45 / RJ45 | 100.0 ft | | | | | |

| Item # | Description | 1-9 | 10-24 | 25-99 | 100-249 | 250-499 |
|--------|-------------|-----|-------|-------|---------|---------|
|--------|-------------|-----|-------|-------|---------|---------|

RoHS Compliant High Performance Category 6 Staggered Alignment Plugs with Loading Bars

This staggered alignment plug will accommodate typical 24 gauge solid or stranded cable. Fully compatible with Category 6 applications. They are specially designed with a multi-level contact configuration and loading bars for precise control of pairing arrangement. This controls the distance between critical pairs that provide lower levels of crosstalk and higher performance. Sold only in packages of 50 plugs.

[TSP4288C6](#)

Modular Plugs, RJ45(8x8) Category 6, Pkg/50



RoHS Compliant Premium Panel Mounted Modular Coupler Kits - Shielded and Unshielded Category 6

These unique coupler kits allow panel mounting in virtually any panel thickness. A solid die-cast metal mounting frame provides secure mounting and reliable grounding. Kits include a snap-in coupler, mounting frame and two 4-40 machine screws.

[ECF504-C6](#)

Category 6 Unshielded RJ45 (8x8) Deluxe Panel Coupler Kit

[ECF504-SC6](#)

Category 6 Shielded RJ45 (8x8) Deluxe Panel Coupler Kit



RoHS Compliant RJ45 (8x8) Keystone Feed-thru Couplers - Shielded and Unshielded Category 6

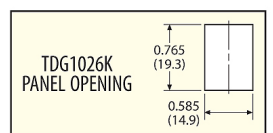
These couplers utilize two RJ45 (8x8) modular jacks and fit into a standard Keystone style opening. A slim housing design permits high density mounting. Couplers listed include 6 performance ratings in Shielded and Unshielded versions. Connector housings enclosed within a fully stamped shielding.

[TDG1026KC6](#)

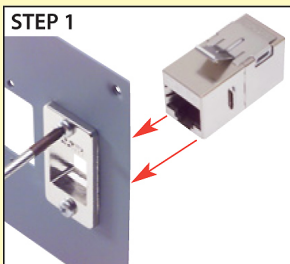
Category 6 Unshielded RJ45 (8x8) Keystone Feed-thru Coupler

[TDG1026KS-C6](#)

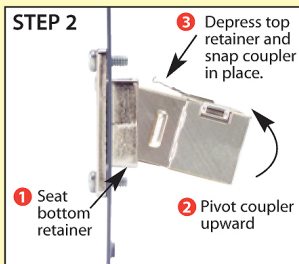
Category 6 Shielded RJ45 (8x8) Keystone Feed-thru Coupler



Tip How to install a premium ECF Coupler Kit



Secure frame in specified opening with supplied hardware and align coupler in proper orientation to the opening.



Seat bottom retainer and pivot coupler upward while depressing upper retainer.



Coupler fully seated.

Shop at [L-com.com](#) or call 1-800-343-1455

E-mail: sales@L-com.com Fax: 978-689-9484

How to panel mount a premium ECF coupler kit

See the free video tip and more at [L-com.com/Videos/A09](#)