



**Features**

- Reliable shaded-pole motor construction
- Precision ball bearing system provides:
  - Longer life
  - Higher temperature extremes
  - Lower noise over time
  - Maximum shock and vibration resistance
- Rugged die-cast aluminum housing for maximum heat dissipation

**Accessories:**

- Finger guards
- Filters
- Screen guard

**General Specifications**

**Frame:** Die-cast aluminum painted black for moisture and corrosion resistance

**Impeller:** Reinforced polybutylene plastic (UL94V-0 rating)

**Bearings:** Precision, life-lubricated ball bearings

**Insulation:** Class A integral ground system rated @ 248°F (120°C)

**Weight:** 7.7 ozs. (220 grams)

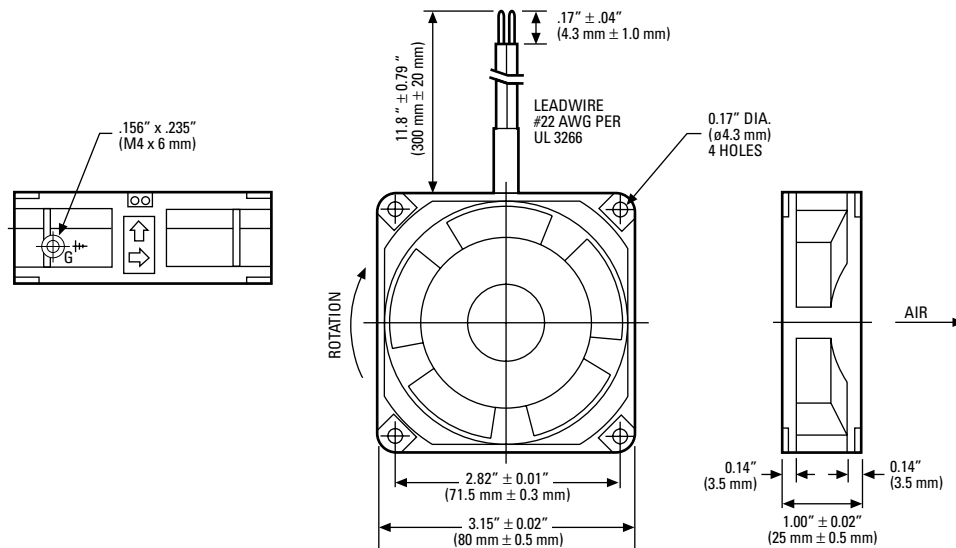
**Operating Temperature Range:** 14° to 158°F (-10° to 70°C)

**Insulation Resistance:** 100 megohms minimum @ 500 VDC

**Dielectric Strength:** 1500 VAC for 3 seconds

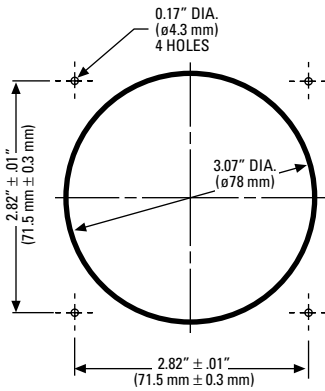
**Safety Protection:** Impedance protected

**Life Expectancy:** 50,000 hours minimum @ 77°F (25°C)

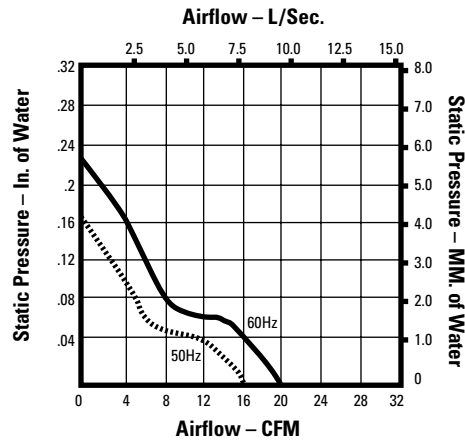


| Globe Motors Part Number | Nominal Voltage VAC | Frequency Hz | Watts     | Line Amps     | RPM         | Acoustic Noise dBA | Airflow (Min.) |                   |
|--------------------------|---------------------|--------------|-----------|---------------|-------------|--------------------|----------------|-------------------|
|                          |                     |              |           |               |             |                    | CFM            | Liters per Second |
| A31-B10A-15W3-000        | 115                 | 50 / 60      | 6.0 / 5.0 | 0.085 / 0.075 | 2600 / 3100 | 28 / 33            | 16 / 20        | 7.6 / 9.4         |

### Installation Guide



### Performance at Sea Level



**A31-B10A-15W3-000**

### Approvals



**UL File No.**  
**E105397**



**CSA File No.**  
**72877**



All operating specifications measured at nominal operating voltage, free air at sea level

### NOTES: