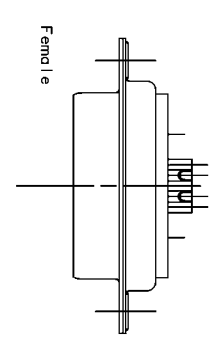
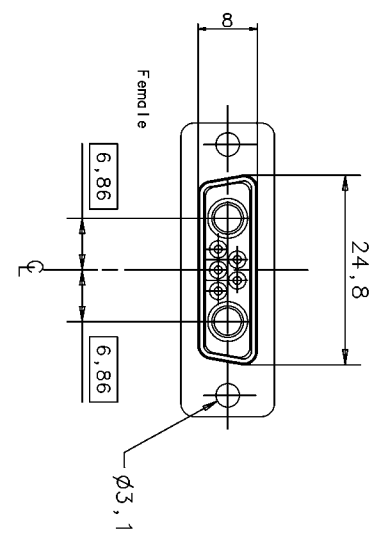
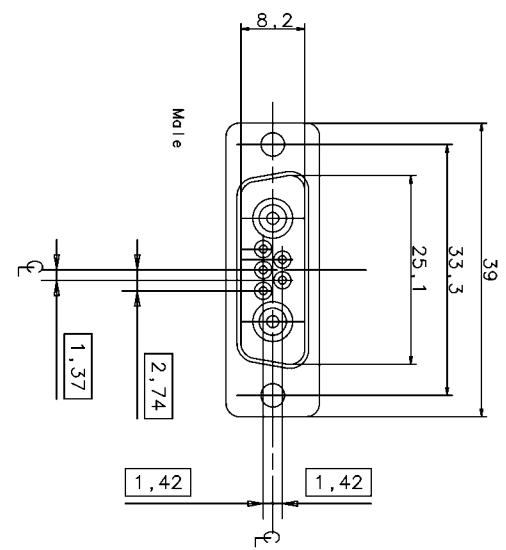
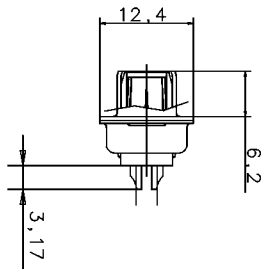
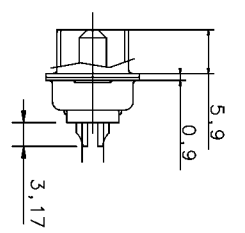


TECHNICAL DATA

'' D '' SUBMINIATURE CONNECTORS



SHELL : Steel
finish : tinned

BODY : Glass filled thermoplastic
Flame retardant to UL 94 V-0 ;
(resist to short term temperature 260°C)
Colour : black .

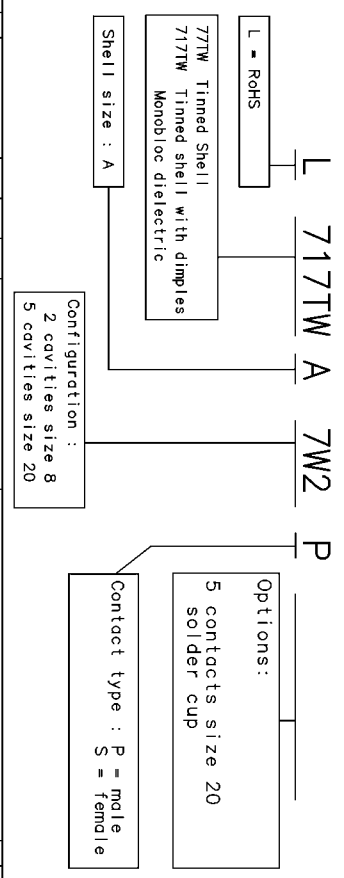
CONTACTS : Material for sockets : bronze
Material for pins brass
Finish of contact mating area :
15 um inch. (0,4 um) Gold over Nickel

ELECTRICAL : Voltage rating 300 V Rms to 50Hz .
Nominal current 7,5 A (size20) 40 A (size 8)
Withstanding Voltage >1000 V Rms to 50 Hz
Contact resistance <5m Ohms .
Insulator resistance >5000 M Ohms.

CLIMATIC : Temperature range -55°C up to +155°C
Damp heart 56 days (40°C - 95 % HR)
Other climatic specifications in accordance
with NF C 93-425, sheet HE507

MECHANICAL : Insertion force per contact 1,2N < F < 2,5 N (size 20)
Extraction force per contact 0,4 N mini (size 20)
Mating and unmating force size A 80N maxi 4.5N mini

MARKING : Amphenol -(serie number)
Commercial reference
Manufacturing date



Amphenol Socapex		Usine de Dole	
Echelle : 2		PLAN NOTICE	
IND. / MODIF. / CATION / DATE / Emprunt / Approuv.		POSSIBLE NOTICE 314-17M	
N SERIE / DESIGNATION		L ** 71TW A 7W2 *	
0177F			

COMMUNICATION ET UTILISATION INTERDITES SAUF AUTORISATION

DATE DU TIRAGE

N ETUDE

N OUTIL

N CLIENT