

Back

- o Flat Cable Connectors SEK
- o *har-mik*®
- o D-Sub
- o InduCom

➔ Applications

Product details

09 16 024 3001 Male insert, Han 24 DD

Series	Han DD®
Number of contacts	24 poles + PE
Size of hood/ housing	Han® 6 B
Termination	Crimp termination
Insert material	Standard material
Contacts	Order separately
Electrical data	10 A 250 V 4 kV 3
RoHS compliant	Yes

Available Downloads

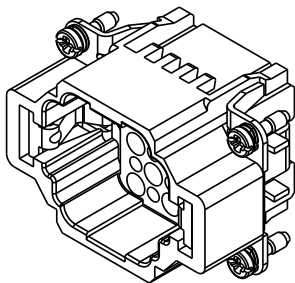
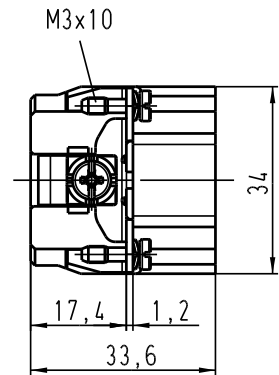
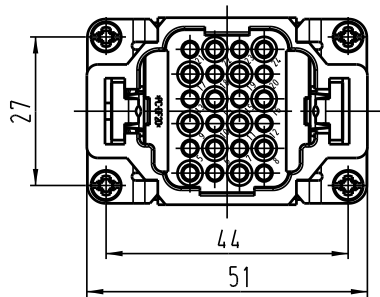
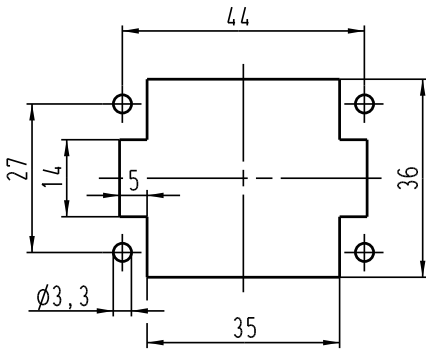
Title	Format	
Data sheet	PDF	download
CAD data 2D	DXF	download
CAD data 3D	IGES	download

Inquiry

Alle Rechte vorbehalten / All rights reserved

5 4 3 2 1

Montageausschnitt /
panel cut out



	All Dimensions in mm Original Size DIN A 4			Techn. Character.			Nicht tolerierte Masse / free size tolerances			
					Dat.	Name	Massestab / Scale	Han 24DD-M-c Stifteinsatz / male insert		
				Detail.	24.06.03	Ho				
				Insp.		KR				
			Stand.			1:1				
410513			HARTING Electric GmbH & Co. KG				TB 09 16 024 3001			Blatt / page
Mod.	Dat.	Name	D-32339 Espelkamp				Sub. TB 09 16 024 3001 v. 22.03.99			