

[Home](#) - [Products](#) - [Technical Data](#) - [Reps/Distr.](#) - [Contact Us](#)

HIGH DENSITY SOLDER CUP CONNECTORS - D3 SERIES

SPECIFICATIONS:

MECHANICAL:

Shell: steel

Finish: tin plated

Insulator: thermoplastic UL94V0

CONTACTS:

Stamped Pin: copper alloy

Contact Engagement Force: max. 12 oz. [3.40N]

Contact Separation Force: max. 0.75 oz. [0.20N]

Finish: reference drawing

ELECTRICAL:

Current Rating: 3 amps

Voltage Rating : 250 vac

Dielectric Withstanding Voltage: 1000 vac @ 1 minute

Insulation Resistance: 500 meg ohm @ 500 vdc

Contact Resistance: <15 milli ohms (mated)

Temperature Range: -55° TO +105° C

Available Sizes:

Male: 15, 26, 44, 62, & 78 position

Female: 15, 26, 44, 62, & 78 position

[RoHS Compliant](#)

[DOWNLOAD](#)

[DRAWING](#)

[CERTIFICATE OF
COMPLIANCE](#)



Part Numbers

XD3E15PTES

XD3E15STS

XD3E26PTES

XD3E26STS

XD3E44PTES

XD3E44STS

XD3E62PTES

XDE362STS

XD3E78PTES

XD3E78STS

[Click here for Non-RoHS Compliant Product Part Number Page](#)

D-SUB HIGH DENSITY SOLDER CUP CONNECTORS - D3 SERIES



NOTE A:

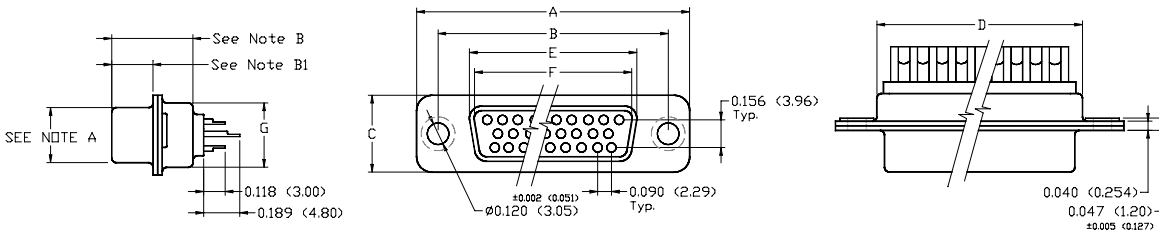
15, 26, 44, & 62C MALE: 0.329 (8.36) ±0.010 (±0.254)
 FEMALE: 0.311 (7.90) ±0.010 (±0.254)
 78C MALE: 0.439 (11.15) ±0.010 (±0.254)
 FEMALE: 0.429 (10.90) ±0.010 (±0.254)

NOTE B:

15, 26, 44, & 62C: 0.429 (10.90) ±0.010 (±0.254)
 78C: 0.431 (10.95) ±0.010 (±0.254)

NOTE B1:

15, 26, 44, & 62C: 0.232 (5.90) ±0.010 (±0.254)
 78C: 0.240 (6.10) ±0.010 (±0.254)



SPECIFICATIONS:

MECHANICAL

Shell: Steel
 Finish: Yellow Zinc or Tin Plate.
 Insulator Material: Thermoplastic UL94V-0.
 Insulator Color: Black

Contacts: Stamped: Copper Alloy.

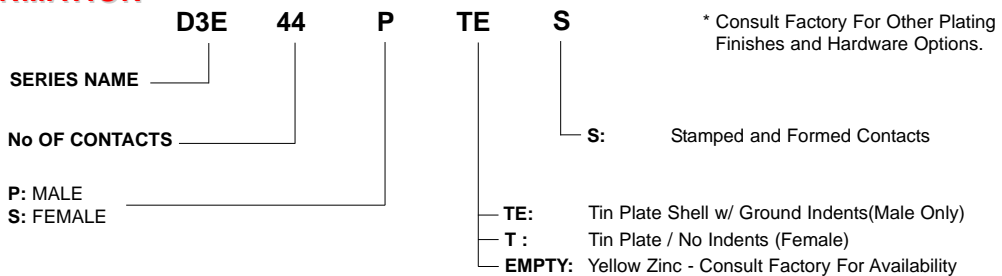
Plating: Gold over Nickel.
 Temperature Range: -55° to +105° C.

ELECTRICAL

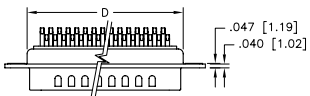
Voltage Rating: 300 VDC.
 Current Rating: 3 Amps.
 IR: > 3000 Meg OHms @ 500V
 CR: < 15 Milliohms.
 Dielectric Withstanding Voltage: AC 1000 V Min. (for 1 Minute).

D-SUB SOLDER CUP CONNECTORS – D3 SERIES - DIMENSIONS								
No. of Contacts	Shell Size	INCHES [MM]						
		A ±0.005 [±0.127]	B ±0.005 [±0.127]	C ±0.005 [±0.127]	D ±0.005 [±0.127]	E Max. Female ±0.005 [±0.127]	F Min. Male ±0.005 [±0.127]	G ±0.005 [±0.127]
15	E (9)	1.213 [30.81]	0.984 [24.99]	0.494 [12.55]	0.759 [19.28]	0.643 [16.33]	0.666 [16.92]	0.422 [10.72]
26	A (15)	1.541 [39.14]	1.310 [33.27]	0.494 [12.55]	1.089 [27.65]	0.971 [24.66]	0.994 [25.25]	0.422 [10.72]
44	B (25)	2.088 [53.04]	1.850 [46.99]	0.494 [12.55]	1.626 [41.30]	1.511 [38.38]	1.534 [38.96]	0.422 [10.72]
62	C (37)	2.730 [69.34]	2.500 [63.50]	0.494 [12.55]	2.261 [57.44]	2.159 [54.84]	2.182 [55.42]	0.422 [10.72]
78	D (50)	2.638 [67.00]	2.402 [61.00]	0.602 [15.30]	2.169 [55.10]	2.056 [52.20]	2.079 [52.81]	0.528 [13.40]

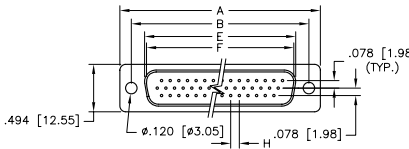
ORDER INFORMATION



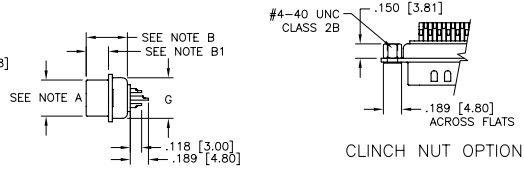
Specifications subject to change without notice



NOTE A: 15, 26, 44 & 62 MALE: 0.327 [8.30]
 15, 26, 44 & 62 FEMALE: 0.311 [7.90]
 NOTE B: 15, 26, 44 & 62 MALE: 0.431 [10.95]
 15, 26, 44 & 62 FEMALE: 0.423 [10.75]
 NOTE B1: 15, 26, 44 & 62 MALE: 0.240 [6.10]
 15, 26, 44 & 62 FEMALE: 0.232 [5.90]



15 THROUGH 62 POSITION



CLINCH NUT OPTION

D3 SERIES CONNECTORS									
No. of Contacts	Shell Size	DIMENSIONS INCHES [MM]							
		A	B	C	D	E Max. Female	F Min. Male	G	H
15	E(9)	1.213 [30.81]	0.984 [24.99]	0.494 [12.55]	0.759 [19.28]	0.643 [16.33]	0.666 [16.92]	0.422 [10.72]	0.090 [2.29]
26	A(15)	1.541 [39.14]	1.310 [33.27]	0.494 [12.55]	1.089 [27.65]	0.971 [24.66]	0.994 [25.25]	0.422 [10.72]	0.090 [2.29]
44	B(25)	2.088 [53.04]	1.850 [46.99]	0.494 [12.55]	1.626 [41.30]	1.511 [38.38]	1.534 [38.96]	0.422 [10.72]	0.090 [2.29]
62	C(37)	2.730 [69.34]	2.500 [63.50]	0.494 [12.55]	2.261 [57.44]	2.159 [54.84]	2.182 [55.42]	0.422 [10.72]	0.095 [2.41]
78	D(50)	2.638 [67.00]	2.406 [61.11]	0.602 [15.30]	2.178 [55.32]	2.064 [52.43]	2.079 [52.81]	0.527 [13.40]	0.095 [2.41]

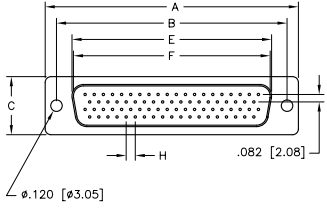
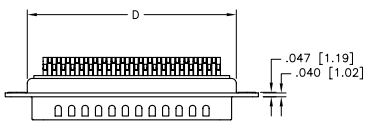
FACTORY DESIGNATOR LEAVE BLANK () D3 E 44 P TE S XXX C

ORDER INFORMATION

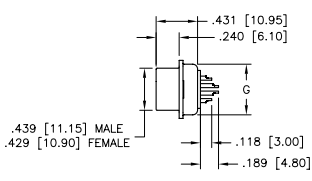
- SERIES
- RoHS
- NO. OF CONTACTS
- P: MALE
- S: FEMALE
- TE: TIN PLATED WITH GROUNDING INDENTS (MALE ONLY)
- T: TIN PLATED NO GROUNDING INDENTS (FEMALE ONLY)
- NE: NICKEL PLATED WITH GROUNDING INDENTS (MALE ONLY)
- N: NICKEL PLATED NO GROUNDING INDENTS (FEMALE ONLY)

- EMPTY: NO OPTIONS
- C: REAR MOUNT #4-40 CLINCH NUT .150 [3.81] [COPPER ALLOY]
- CONTACT FINISH:
 - EMPTY: GOLD FLASH OVER ENTIRE CONTACT
 - CONSULT FACTORY FOR OTHER PLATING OPTIONS
- S: STAMPED AND FORMED CONTACTS

- NOTES:
- SHELL MATERIAL: STEEL
 - SHELL FINISH: SEE ORDER INFORMATION
 - INSULATOR MATERIAL: THERMOPLASTIC UL94V-0
 - INSULATOR COLOR: BLACK
 - CONTACTS: COPPER ALLOY
 - VOLTAGE RATING: 250 VAC
 - CURRENT RATING: 3 AMPS MAX
 - CONTACT RESISTANCE: 15 MILLIOHMS MAX
 - INSULATION RESISTANCE: 500 MEGOHMS @ 500 VDC
 - DIELECTRIC WITHSTANDING VOLTAGE: 1000 VAC / 1 MINUTE
 - TEMPERATURE RANGE: -55° TO +105° CENTIGRADE
 - COMPLIANCE NOTE: PART MUST BE IN COMPLIANCE TO: DIRECTIVE 2002/95/EC of 27 January 2003 [RoHS]



78 POSITION



THIS IS A CONTROLLED DOCUMENT AND IS SUBJECT TO CHANGE. CONTACT NORTHERN TECHNOLOGIES ENGINEERING FOR THE LATEST REVISION.

UNLESS OTHERWISE SPECIFIED		Northern Technologies		THIS DRAWING IS THE PROPERTY OF NORTHERN TECHNOLOGIES AND SHOULD NOT BE REPRODUCED WITHOUT NORTHERN TECHNOLOGIES' WRITTEN PERMISSION.	
1. ALL DIMENSIONS ARE IN INCHES (MM)		PART NUMBER SEE ORDER INFORMATION		DESCRIPTION D3E SERIES CONNECTORS [RoHS]	
2. DIMENSIONS ARE TYPICAL		DRAWN JSD 13-OCT-05		SIZE CODE DWG NO. REV	
CHECKED	SCN 13-OCT-05	B 200_156		0002-200-156	
ISSUED	13-OCT-05	SCALE 1:1		SHEET 1 OF 1	