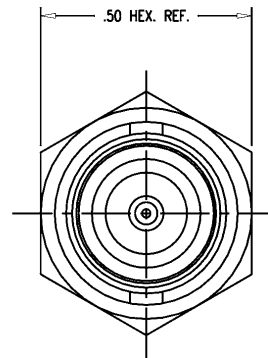
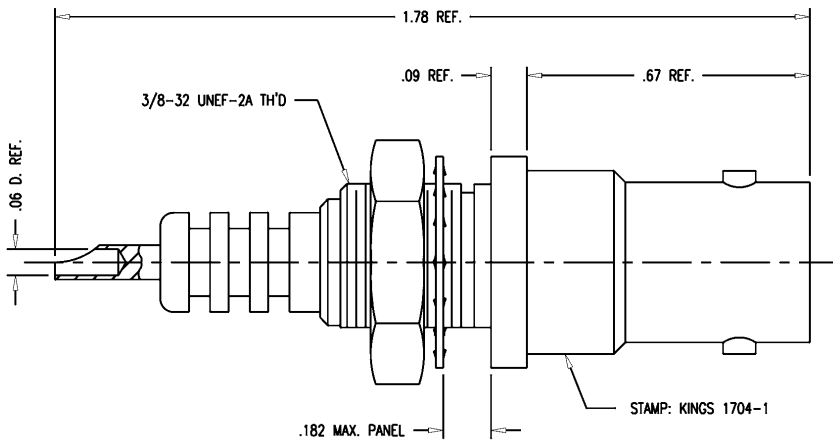


DASH NO.	M CODE	MADE FROM
----------	--------	-----------

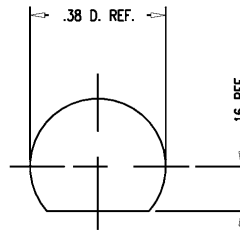
GSD

1704-1

REVISIONS	
ISSUE	CHANGES
3	CN 34186 C REDRAWN KH 11/06/92
4	CN 37282 C PG 02/24/97



- NOTES:
1. INTERFACE PER MIL-STD-348, FIG. 314-1.
  2. MATERIALS:  
INSULATOR: TEFLON, ASTM-D-1457  
LOCKWASHER: PHOSPHOR BRONZE, QQ-B-750  
ALL OTHER METAL PARTS: BRASS, ASTM-B16
  3. FINISHES:  
CENTER CONTACT: GOLD PLATE PER MIL-G-45204  
ALL OTHER METAL PARTS: KINGS TARNISH RESISTANT FINISH (TR-5)
  4. ELECTRICAL CHARACTERISTICS:  
NOMINAL IMPEDANCE: NON-CONSTANT  
VOLTAGE RATING: 3500 VRMS  
5000 VDC



MOUNTING HOLE

GSD

SCALE 4:1	
APPROX SURFACE AREA	
USED ON	
REF:	
RECEPTACLE, BULKHEAD, SHV, M	
DRAWN KH	DATE 11/09/92
DESIGN LI	DATE 11/10/92
APPR.	DATE
 KINGS ELECTRONICS CO., INC. TUCKAHOE, NEW YORK 10707	
1704-1	