

Back

- o Flat Cable Connectors SEK
- o *har-mik*®
- o D-Sub
- o InduCom

➔ Applications

Product details

09 20 010 2812 Female insert, Han 10 A

Series	Han A®
Number of contacts	10 poles + PE
Size of hood/ housing	Han® 10 A
Termination	Screw termination
Insert material	Standard material
Contacts	Inclusive
Electrical data	16 A 250 V 4 kV 3
RoHS compliant	Yes

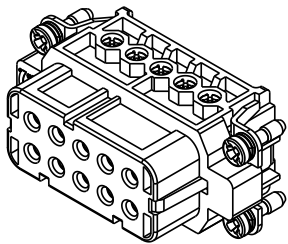
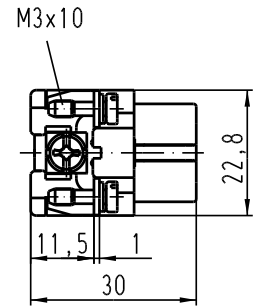
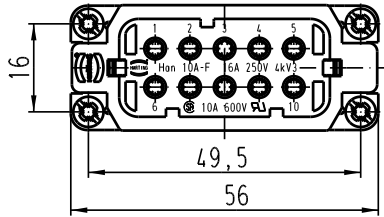
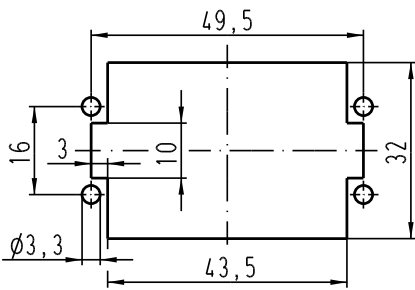
Available Downloads

Title	Format	
Data sheet	PDF	download
CAD data 2D	DXF	download
CAD data 3D	IGES	download

Inquiry

Alle Rechte vorbehalten / All rights reserved

Montageausschnitt/
panel cut out



All Dimensions in mm Original Size DIN A 4		Techn. Character.			Nicht tolerierte Masse! Free size tolerances	
Mod.	Dat.	Name	Dat.	Name	Masstab/Scale	
411720	25.07.05	Grie	Detail.	29.03.99	PL	1:1
411421	20.01.05	Loe.	Insp.		SDT	
410526	18.07.03	Ho	Stand.			
29620	28.06.01	ROH.	HARTING Electric GmbH & Co. KG			TB 09 20 010 2812
25622			D-32339 Espelkamp			
Sub. TB 09 20 0.. 2812 v. 11.01.96						