

Back

- o Flat Cable Connectors SEK
- o *har-mik*®
- o D-Sub
- o InduCom


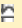
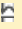
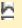
➔ Applications

Product details

09 21 025 3001 Male insert, Han 25 D

Series	Han D®, Han D® AV
Number of contacts	25 poles + PE
Size of hood/housing	Han® 16 A
Termination	Crimp termination
Insert material	Standard material
Contacts	Order separately
Electrical data	10 A 250 V 4 kV 3
RoHS compliant	Yes

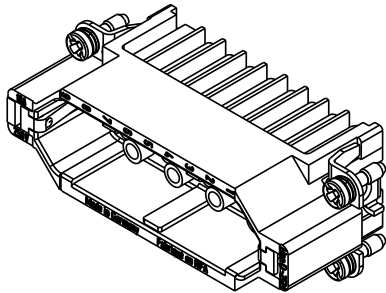
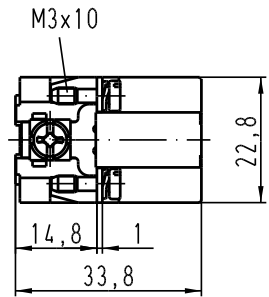
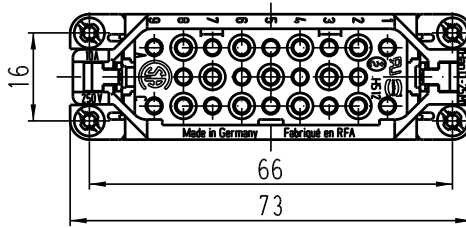
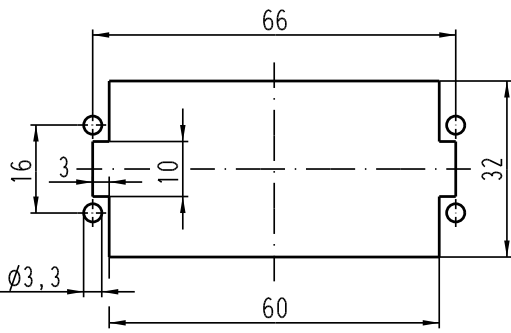
Available Downloads

Title	Format	
Data sheet	PDF	 download
CAD data 2D	DXF	 download
CAD data 3D	IGES	 download
CAD data 3D	STEP	 download

Inquiry

Alle Rechte vorbehalten/ All rights reserved

Montageausschnitt/
panel cut out



		All Dimensions in mm Original Size DIN A 4			Techn. Character.		Nicht tolerierte Masse! free size tolerances		
				Dat.	Name	Massstab/Scale 1:1	Han 25D-M-c Stiftträger / male insert		
				Detail. 12.04.99 KR					
				Insp. SDT.					
411417	18.01.05	Loe.		Stand.			TB 09 21 025 3001		
410526	18.07.03	Ho		HARTING Electric GmbH & Co. KG		Blatt/ page			
25626				D-32339 Espelkamp					
Mod.	Dat.	Name				Sub. TB 09 21 0.. 3001 Bl.1/2 v. 01.03.93			

