

Back

- o Flat Cable Connectors SEK
- o *har-mik*®
- o D-Sub
- o InduCom


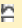
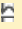
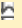
➔ Applications

Product details

09 21 015 3001 Male insert, Han 15 D

Series	Han D®, Han D® AV
Number of contacts	15 poles + PE
Size of hood/housing	Han® 10 A
Termination	Crimp termination
Insert material	Standard material
Contacts	Order separately
Electrical data	10 A 250 V 4 kV 3
RoHS compliant	Yes

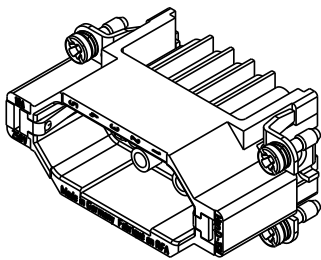
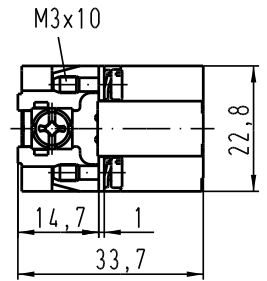
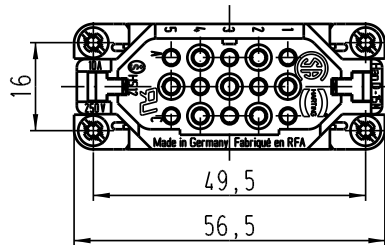
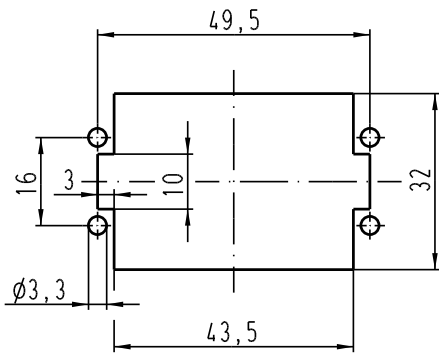
Available Downloads



Title	Format	
Data sheet	PDF	 download
CAD data 2D	DXF	 download
CAD data 3D	IGES	 download
CAD data 3D	STEP	 download

Inquiry

Alle Rechte vorbehalten / All rights reserved

Montageausschnitt/
panel cut out



 All Dimensions in mm Original Size DIN A 4			Techn. Character.			Nicht tolerierte Masse / free size tolerances	
Mod.	Dat.	Name	Det.	Name	Massestab / Scale	Han 15D-M-c Stiftträger / male insert	
			Detail:	12.04.99 KR			
			Insp.	SDT.	Blatt / page		
411417	18.01.05	Loe.	Stand.			Sub. TB 09 21 0.. 3001 BL.1/2 v. 01.03.93	
410526	18.07.03	Ho	HARTING Electric GmbH & Co. KG D-32339 Espelkamp				
25626							
Mod.	Dat.	Name					