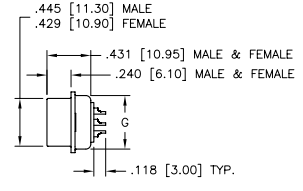
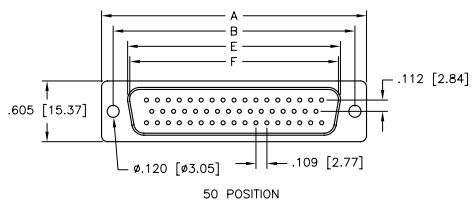
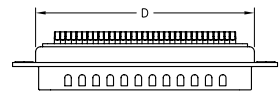
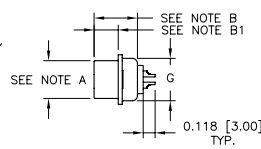


NOTE A: 9, 15, 25 & 37 MALE: 0.327 [8.30]
 9, 15, 25 & 37 FEMALE: 0.311 [7.90]
 NOTE B: 9, 15, 25 & 37 MALE: 0.431 [10.95]
 9, 15, 25 & 37 FEMALE: 0.423 [10.75]
 NOTE B1: 9, 15, 25 & 37 MALE: 0.236 [5.99]
 9, 15, 25 & 37 FEMALE: 0.236 [5.99]



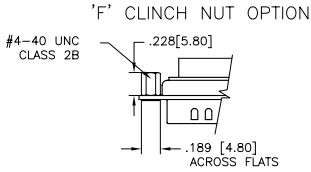
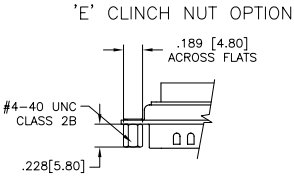
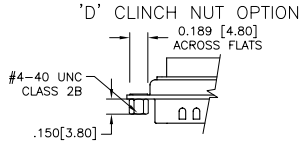
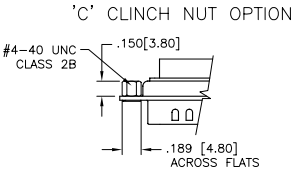
THIS IS A CONTROLLED DOCUMENT AND IS SUBJECT TO CHANGE. CONTACT NORTHERN TECHNOLOGIES ENGINEERING FOR THE LATEST REVISION.

REVISIONS				
ZONE	REV	DESCRIPTION	DATE	APPROVED

No. of Contacts	Shell Size	DIMENSIONS						
		A	B	C	D	E Max. Female	F Min. Male	G
09	E	1.213 [30.81]	0.984 [24.99]	0.494 [12.55]	0.759 [19.28]	0.643 [16.33]	0.666 [16.92]	0.422 [10.72]
		±0.010 [±0.254]	±0.010 [±0.254]	±0.010 [±0.254]	±0.010 [±0.254]	±0.010 [±0.254]	±0.010 [±0.254]	±0.010 [±0.254]
15	A	1.541 [39.14]	1.310 [33.27]	0.494 [12.55]	1.089 [27.65]	0.971 [24.66]	0.994 [25.25]	0.422 [10.72]
		±0.010 [±0.254]	±0.010 [±0.254]	±0.010 [±0.254]	±0.010 [±0.254]	±0.010 [±0.254]	±0.010 [±0.254]	±0.010 [±0.254]
25	B	2.088 [53.04]	1.850 [46.99]	0.494 [12.55]	1.626 [41.30]	1.511 [38.38]	1.534 [38.96]	0.422 [10.72]
		±0.010 [±0.254]	±0.010 [±0.254]	±0.010 [±0.254]	±0.010 [±0.254]	±0.010 [±0.254]	±0.010 [±0.254]	±0.010 [±0.254]
37	C	2.750 [69.34]	2.500 [63.50]	0.494 [12.55]	2.261 [57.44]	2.159 [54.84]	2.182 [55.42]	0.422 [10.72]
		±0.010 [±0.254]	±0.010 [±0.254]	±0.010 [±0.254]	±0.010 [±0.254]	±0.010 [±0.254]	±0.010 [±0.254]	±0.010 [±0.254]
50	D	2.638 [67.00]	2.406 [61.11]	0.605 [15.37]	2.178 [55.32]	2.064 [52.43]	2.079 [52.81]	0.527 [13.40]
		±0.010 [±0.254]	±0.010 [±0.254]	±0.010 [±0.254]	±0.010 [±0.254]	±0.010 [±0.254]	±0.010 [±0.254]	±0.010 [±0.254]

UNLESS OTHERWISE SPECIFIED		Northern Technologies		THIS DRAWING IS THE PROPERTY OF NORTHERN TECHNOLOGIES AND SHOULD NOT BE REPRODUCED WITHOUT NORTHERN TECHNOLOGIES WRITTEN PERMISSION.	
1. ALL DIMENSIONS ARE IN INCHES (MM)		PART NUMBER SEE ORDER INFORMATION		DESCRIPTION DE SERIES CONNECTORS	
2. DIMENSIONS ARE TYPICAL		DRAWN JSD 13-OCT-05		CHECKED SCN 13-OCT-05	
		ISSUED 13-OCT-05			
		SIZE CODE 200_155		DWG NO. 0002-200-155	
		SCALE 1:1		SHEET 1 OF 2	

REVISIONS				
ZONE	REV	DESCRIPTION	DATE	APPROVED
	A	ECN 0594	08-MAY-06	
	B	ECN 0619	25-AUG-06	
	C	ECN 0639	05-DEC-07	
	D	ECN 0654	16-MAY-08	



FACTORY DESIGNATOR

LEAVE BLANK ()

() D E 25 P T E S C S30

SERIES _____

RoHS _____

NO. OF CONTACTS _____

P: MALE _____

S: FEMALE _____

ORDER INFORMATION

[CONTACT PLATING]

— EMPTY: GOLD FLASH OVER NICKEL – ENTIRE CONTACT

— S: GOLD FLASH AT MATING END – TINNED SOLDER CUP (STAMPED AND FORMED CONTACTS OPTION)

— S30: 30*μ*i GOLD AT MATING END – TINNED SOLDER CUP [CONTACT FACTORY FOR OTHER PLATING OPTIONS]

— EMPTY: NO OPTIONS

— C: REAR MOUNT CLINCH NUT .150 [3.80]

— D: FRONT MOUNT CLINCH NUT 0.150 [3.80]

— E: FRONT MOUNT CLINCH NUT 0.228 [5.80]

— F: REAR MOUNT CLINCH NUT 0.228 [5.80]

— S: STAMPED AND FORMED CONTACTS

— EMPTY: MACHINED CONTACTS

— TE: TIN PLATED WITH GROUNDING INDENTS (MALE ONLY)

— T: TIN PLATED NO GROUNDING INDENTS (FEMALE ONLY)

— NE: NICKEL PLATED WITH GROUNDING INDENTS (MALE ONLY)

— N: NICKEL PLATED NO GROUNDING INDENTS (FEMALE ONLY)

NOTES:

1. SHELL MATERIAL: STEEL
2. SHELL FINISH: SEE ORDER INFORMATION
3. INSULATOR MATERIAL: THERMOPLASTIC / PBT UL94V-0
4. INSULATOR COLOR: BLACK
5. CONTACTS: COPPER ALLOY
6. VOLTAGE RATING: 250 VAC
7. CURRENT RATING: 3 AMPS MAX
8. CONTACT RESISTANCE: 15 MILLIOHMS MAX.
9. INSULATION RESISTANCE: 3000 MEGOHMS @ 500 VDC
10. DIELECTRIC WITHSTANDING VOLTAGE: 1000 VAC / 1 MINUTE
11. TEMPERATURE RANGE: -55° TO +105° CENTIGRADE

THIS IS A CONTROLLED DOCUMENT AND IS SUBJECT TO CHANGE. CONTACT NORTHERN TECHNOLOGIES ENGINEERING FOR THE LATEST REVISION.

UNLESS OTHERWISE SPECIFIED		Northern Technologies		THIS DRAWING IS THE PROPERTY OF NORTHERN TECHNOLOGIES AND SHOULD NOT BE REPRODUCED WITHOUT NORTHERN TECHNOLOGIES WRITTEN PERMISSION.	
1. ALL DIMENSIONS ARE IN INCHES (MM)		PART NUMBER SEE ORDER INFORMATION		DESCRIPTION DE SERIES CONNECTORS	
2. DIMENSIONS ARE TYPICAL		DRAWN JSD 13-OCT-05		CHECKED SCN 13-OCT-05	
DRAWN JSD 13-OCT-05		ISSUED 13-OCT-05		SCALE 1:1	
CHECKED SCN 13-OCT-05		ISSUED 13-OCT-05		SHEET 2 OF 2	
SIZE B		CODE 200_155		DWG NO. 0002-200-155	
REV		REV		REV	