

## PANEL MOUNT DC POWER JACKS



1. 712A
2. PC712A
3. 2C1072
4. L722A

### FEATURES

\*2 conductor jack.

\*Automatic switch over from AC to DC permitted by sleeve shunt spring.

\*Split center pin shaped to hold mating plug firmly. (732A available in solid center pin only.)

\*Choose solder lug or PC terminal. (732A not available in PC terminal.)

\*Bushing length available as .219" or extended .319 to permit use in thicker panels. (732A not available in extended length.)

\*L712A and PCL712A accept plugs with .475" long, 0.099" diameter sleeve.

\*L722A and PCL722A accept plugs with .475" long, 0.08" diameter sleeve.

### MOUNTING

**Part Numbers 712A, 722A and 732A** - Mounts in .313 inch diameter hole in panels up to .125 inches thick (maximum).

**Part Numbers PC712A and PC722A** - Same as 712A. See drawing for PC board layout.

**Part Number 2C1072** - Jack covers for 712A, 722A and 732A - special order only.

For insulated mounting, two insulated washers are available on special order. Mounting hole diameter is .375 inches. See "Insulated Mounting" drawing.

**Part Number P2442** - Phenolic flat washer.

**Part Number S4263** - Swedged fiber washer.

## SPECIFICATIONS

### MECHANICAL

**Life:** 10,000 insertion/withdrawal cycles minimum.

**Insertion/Withdrawal Forces:** 3 pound insertion (maximum), 4 ounce minimum withdrawal.

**Part Numbers 712A, PC712A, 722A, PC722A, 732A**

### ELECTRICAL

**Contact Resistance:** .01 ohms maximum (initial), .02 ohms maximum (after humidity, durability exposure), .1 ohms maximum (after salt spray).

**Insulation Resistance:** 10,000 M(ohm) minimum (initial), 1,000 M(ohm) minimum (after humidity, durability exposure).

**Dielectric Withstanding Voltage:** 500 V AC maximum.

**Contact Rating:** 5 A, 12 V DC. resistive.

### MATERIAL

**Housing:** Molded plastic.

**Mounting Bushing and Hex Nut:** Plated copper alloy.

**Pin, Spring and Terminals:** Plated copper alloy.

**Insulators:** Rigid plastic.

**Hardware:** Supplied with one **Number P2439** nickel-plated brass hex nut, and one **Number P2441** nickel-plated steel flat washer.

Part Number	Description	Outside Diameter*	Typical Mating Plug**
712A	Solder lugs	0.1 inches (.097-.099)	760 760K 761K
PC712A	PC terminals		
L712A	Longer Bushing		
722A	Solder lugs	0.08 inches (.075-.077)	S760 S760K S761K
PC722A	PC terminals		
L722A	Longer Bushing		
732A	Solder lugs	0.05 inches	860

\* Center pin diameter.

\*\* Other mating Plugs are available.

[p.c. board layouts and dimensional drawings](#)

(you will need to have Adobe Acrobat installed on your system to do this)

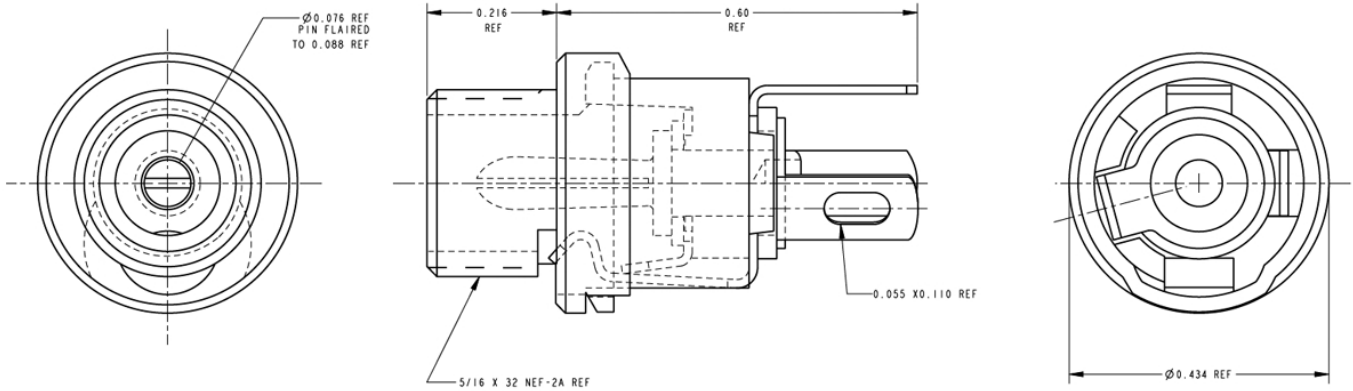


**To search a category please click on the corresponding button:**

| [Connectors](#) | [Jacks and Plugs](#) |  
| [Patch Panels, Patch Kits & Jackfields](#) | [Cable Assemblies and Patch Cords](#) | [Switches](#) |

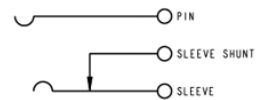
**All products shown are covered by Switchcraft's limited lifetime warranty.**

Switchcraft Inc., 5555 N. Elston Ave., Chicago, IL 60630  
Phone: 773-792-2700 Fax: 773-792-2129



**MATERIAL:**

MOUNTING BUSHING: COPPER ALLOY, NICKEL PLATED.  
 HOUSING: THERMOPLASTIC, BLACK  
 PIN, SPRING AND TERMINALS: COPPER ALLOY, SILVER PLATED.  
 INSULATORS: PHENOLIC  
 HARDWARE: HEX NUT: COPPER ALLOY, NICKEL PLATED  
 FLAT WASHER: STEEL, NICKEL PLATED  
 (NOT SHOWN)



CIRCUIT DIAGRAM

CUSTOMER DRAWING  
 CAD/CAM DWG. NO.  
 722A\_CD  
 SHEET 1 OF 1

Q	ECO #	DATE	BY	CHK	DESCRIPTION	THIS DRAWING DESCRIBES A DESIGN CONSIDERED PROPRIETARY IN NATURE, DEVELOPED AND MANUFACTURED BY SWITCHCRAFT INC. AND IS RELEASED ON A CONFIDENTIAL BASIS FOR IDENTIFICATION PURPOSE ONLY.			
6	ECO #2292	8-31-93	JL	SK	★ STAR SYMBOL DENOTES CRITICAL DIMENSION (SEE S.I.E. ENGINEERING STANDARD E3-001) UNLESS OTHERWISE SPECIFIED	DATE	WIDTH	MOUL	TEMPER
7	ECO #2055	9-8-93	DA	TAO	1. ALL DIMENSIONS IN INCHES TWO PLACE DECIMAL ±.005 THREE PLACE DECIMAL ±.005 ANGLES 90° ±'	FINISH	SCALE	MATERIAL	SPEC. NO.
8	ECO #2055	9-8-93	DA	TAO	2. REMOVE ALL BURRS	FIRST USED ON	1 ± 0.125		
9	ECO #2044	9-8-93	DA	TAO	3. MAKE NO DIMENSIONAL ALLOWANCES FOR APPLIED FINISHES, I.E., PLATING, PAINTING, ETC.	DATE DRAWN	BY	CHK'D	APP'D
10	ECO #1882	3-10-93	RC	GUJ	4. HOLES ON THE SAME CENTERLINE MUST BE ALIGNED WITHIN .002	10-4-93	RS	TAO	GUJ
11	FIRST DRAWN	10-4-93	RS	GUJ		10-11-93		10-11-93	
ISSUE		CHANGE NO.	DATE	BY	APP'D	NAME		PART NO.	
REVISIONS					DO NOT SCALE DRAWING				
POWER JAX								722A	

Switchcraft®

C