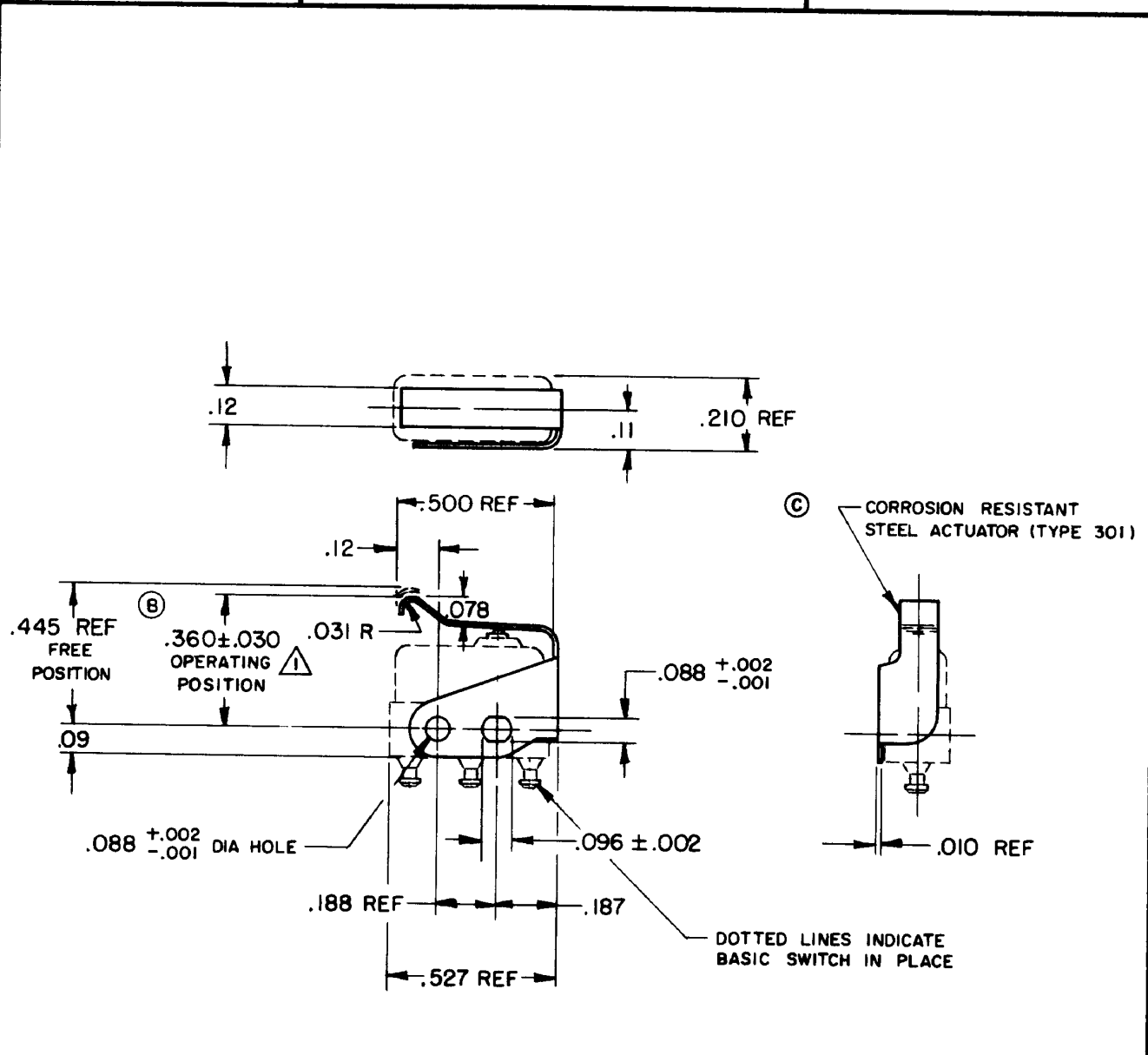


**MICRO SWITCH**  
 A DIVISION OF MINNEAPOLIS-HONEYWELL REGULATOR COMPANY  
 FREEPORT, ILLINOIS  
 FED. MFR. CODE 91929

**ACTUATOR - SWITCH**

CATALOG LISTING  
**JX - 48**

JX - 48  
 M  
 DRAWING NUMBER  
 X  
 ISSUE  
 5  
 3  
 REVISIONS  
 A SR 10519 M B F 1 OCT 62  
 B CO 22579 O M W 1 MAY 67  
 C CO 22579 M B S 19 APR 68  
 D CO 82928 D L T 13 MAY 68  
 DES 17 FEB 61  
 CHECK  
 K L B 17 FEB 61  
 DRAWN  
 FO-50378



**NOTE -**  
 △ SLIGHT ROTATION BETWEEN BASIC AND ACTUATOR MAY BE NECESSARY TO OBTAIN OPERATING POSITION, BASED ON USING NO. 2-56 MACHINE SCREWS

THIS DRAWING COVERS A PROPRIETARY ITEM AND IS THE PROPERTY OF MICRO SWITCH, A DIVISION OF MINNEAPOLIS-HONEYWELL REGULATOR CO. THIS DRAWING IS NOT TO BE COPIED OR USED WITHOUT THE APPROVAL OF MICRO SWITCH.

CHARACTERISTICS WITH ISKI-T BASIC SWITCH INSTALLED	ELECTRICAL DATA		SCALE 2 TO 1	
OPERATING FORCE ----- 10 OZ MAX	CONTACT ARRANGEMENT	BREAK DISTANCE	DO NOT SCALE PRINT	
RELEASE FORCE ----- 2 OZ MIN			UNLESS OTHERWISE SPECIFIED DIMENSIONS ARE IN INCHES	
DIFFERENTIAL TRAVEL ----- .025 MAX			<b>TOLERANCES ARE:</b>	
OVERTRAVEL ----- .015 MIN			ONE PLACE (.0) ±.030 TWO PLACE (.00) ±.018 THREE PLACE (.000) ±.008 ANGLES ±	
			WEIGHT	