

Free eNewsletter

Enter your E-mail



Shop By Type

Cable Assemblies
Adapters
Connectors
Rack Panels
Bulk Cable
Tools
Switch Boxes
Network Cards
Hubs & Switches
Converters & Transceivers
KVM Switches
Antennas

Overstock/Sale Items

Top 10 Products

Shop By Category

IEEE-488 GPIB
Coaxial
Monitor, Video
Fiber Optic
D-Subminiature
Modular
USB, DIN, Firewire, SCSI, and Others
Wireless Infrastructure
Weatherproof Enclosures
Networking and Other Equipment

Product Wizards

Cable Assemblies
Adapters
Connectors
Rack Panels
Tools
Switch Boxes
Network Cards
Hubs or Switches
Ethernet Converters
KVM Switches

Technical Resources

FAQs
Connector Chart
Glossary
Tutorials
Tips and Videos
White Papers
Catalog Downloads
eNewsletter Archive

You Are Here: [Home](#) > [Modular](#) > [Adapters, Couplers, Splitters](#) > [Modular Couplers](#) > [ECF504- C, SC](#) > **ECF504-SC6**

Category 6 Shielded RJ45 (8x8) Deluxe Panel Coupler Kit

L-com's premium line of Modular Couplers combines innovative design with an affordable price. With a solid die-cast metal mounting frame, these unique coupler kits allow panel mounting in virtually any panel thickness. Designed to work with EIA/TIA 568A and B wiring, these couplers offer a reliable method to pass high-speed data communication through a chassis or rack panel. Couplers listed include Category 3, 5E and 6 performance ratings in both Shielded and Unshielded versions. Kits include a snap-in coupler, mounting frame and 4-40 machine screws.



Features for this Modular product

- EIA/TIA 568A/B compliant insures compatibility and reliability in your application
- Category 3, 5E and 6 performance ratings facilitate high-speed data communication
- RJ45 Female connectors and straight through wiring for network system compatibility
- Fully stamped shielding (where applicable) offers isolation from EMI/RFI
- Flange kit includes a snap-in coupler, mounting frame and 4-40 machine screws

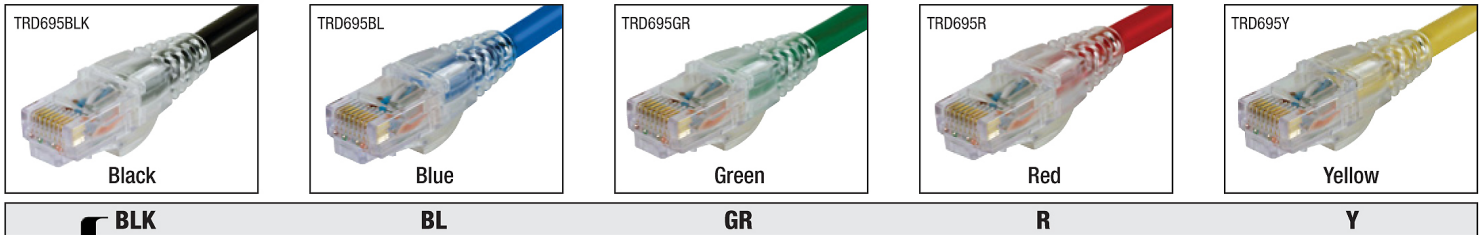
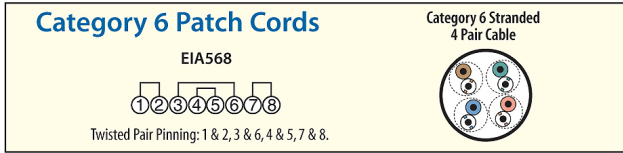
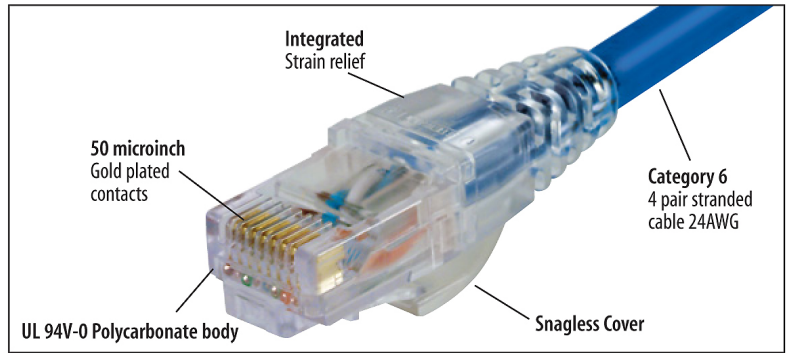
Details for this Modular product

L-com Item #	ECF504-SC6
Manufacturer	L-com
ASIN # (More)	B000AAHWFQ
UPC # (More)	822335022485
RoHS Status	RoHS Compliant (More)

- [Tip](#)
- [Video Clip](#)
- [Catalog Page](#)
- [Catalog Page](#)
- [Catalog Page](#)
- [2D Drawing \(.pdf\)](#)
- [3D CAD Model \(.step\)](#)

RoHS Compliant Premium Category 6 RJ45 Hi-Speed Network Patch Cables

Realistic pricing and high quality is what makes L-com's Category 6 Patch Cables the right choice. Made with high performance 4-Pair Category 6 cable and Stewart snagless plugs, these cables are ready to be installed in your network. Affordability and peace of mind are assured when choosing L-com's patch cables. Large volume OEM requests are welcomed with this series. Contact us today for all your patch cord needs.



Ordering is easy, add the desired color code to the part number. Ex: TRD695BLK-1

Item #	Description	Length	1-9	10-24	25-99	100-249	250-499
TRD695 ___ -1	Category 6 Patch Cable, RJ45 / RJ45	1.0 ft					
TRD695 ___ -3	Category 6 Patch Cable, RJ45 / RJ45	3.0 ft					
TRD695 ___ -5	Category 6 Patch Cable, RJ45 / RJ45	5.0 ft					
TRD695 ___ -7	Category 6 Patch Cable, RJ45 / RJ45	7.0 ft					
TRD695 ___ -10	Category 6 Patch Cable, RJ45 / RJ45	10.0 ft					
TRD695 ___ -14	Category 6 Patch Cable, RJ45 / RJ45	14.0 ft					
TRD695 ___ -25	Category 6 Patch Cable, RJ45 / RJ45	25.0 ft					
TRD695 ___ -50	Category 6 Patch Cable, RJ45 / RJ45	50.0 ft					
TRD695 ___ -75	Category 6 Patch Cable, RJ45 / RJ45	75.0 ft					
TRD695 ___ -100	Category 6 Patch Cable, RJ45 / RJ45	100.0 ft					

Item #	Description	1-9	10-24	25-99	100-249	250-499
--------	-------------	-----	-------	-------	---------	---------

RoHS Compliant High Performance Category 6 Staggered Alignment Plugs with Loading Bars

This staggered alignment plug will accommodate typical 24 gauge solid or stranded cable. Fully compatible with Category 6 applications. They are specially designed with a multi-level contact configuration and loading bars for precise control of pairing arrangement. This controls the distance between critical pairs that provide lower levels of crosstalk and higher performance. Sold only in packages of 50 plugs.

[TSP4288C6](#) Modular Plugs, RJ45(8x8) Category 6, Pkg/50



RoHS Compliant Premium Panel Mounted Modular Coupler Kits - Shielded and Unshielded Category 6

These unique coupler kits allow panel mounting in virtually any panel thickness. A solid die-cast metal mounting frame provides secure mounting and reliable grounding. Kits include a snap-in coupler, mounting frame and two 4-40 machine screws.

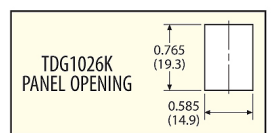
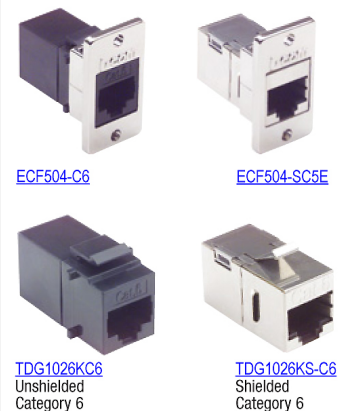
[ECF504-C6](#) Category 6 Unshielded RJ45 (8x8) Deluxe Panel Coupler Kit
[ECF504-SC6](#) Category 6 Shielded RJ45 (8x8) Deluxe Panel Coupler Kit



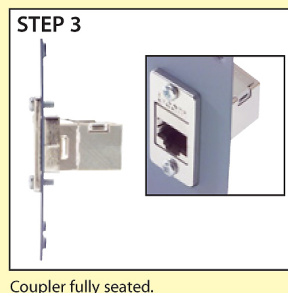
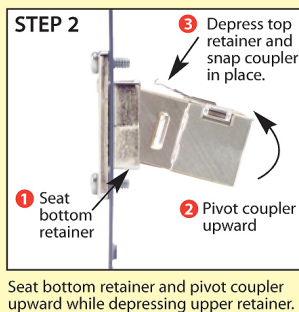
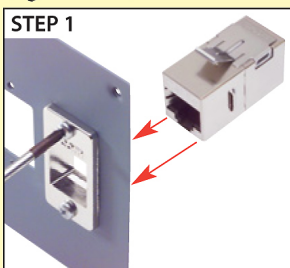
RoHS Compliant RJ45 (8x8) Keystone Feed-thru Couplers - Shielded and Unshielded Category 6

These couplers utilize two RJ45 (8x8) modular jacks and fit into a standard Keystone style opening. A slim housing design permits high density mounting. Couplers listed include 6 performance ratings in Shielded and Unshielded versions. Connector housings enclosed within a fully stamped shielding.

[TDG1026KC6](#) Category 6 Unshielded RJ45 (8x8) Keystone Feed-thru Coupler
[TDG1026KS-C6](#) Category 6 Shielded RJ45 (8x8) Keystone Feed-thru Coupler



Tip How to install a premium ECF Coupler Kit



Shop at [L-com.com](#) or call **1-800-343-1455**
 E-mail: sales@L-com.com Fax: 978-689-9484

How to panel mount a premium ECF coupler kit
 See the free video tip and more at [L-com.com/Videos/A09](#)