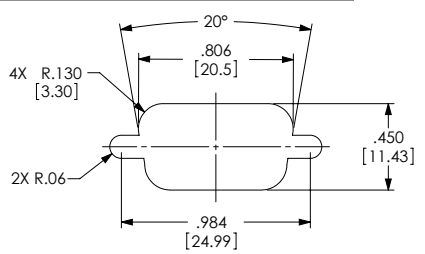


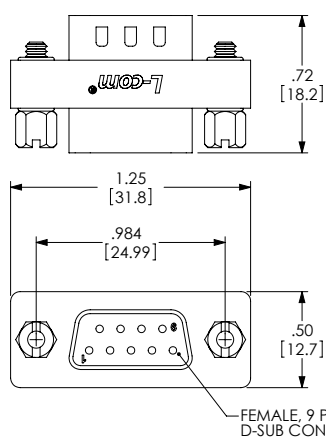
THE INFORMATION CONTAINED IN THIS DRAWING IS THE SOLE PROPERTY OF L-COM, INC. ANY REPRODUCTIONS IN PART OR WHOLE WITHOUT THE WRITTEN PERMISSION OF L-COM, INC. IS PROHIBITED.

REVISIONS			
REV	DESCRIPTION	DATE	CHANGED BY
A	RELEASED FOR PRODUCTION	02/12/2001	MC/COBENCK
B	FOR THE DRAWING UPDATE	02/12/2001	MC/COBENCK
C	ENH. 4016. ADD SHELL TO SHELL IN WBT MAP. NEW FORMAT	03/09/04	D/RESBILD

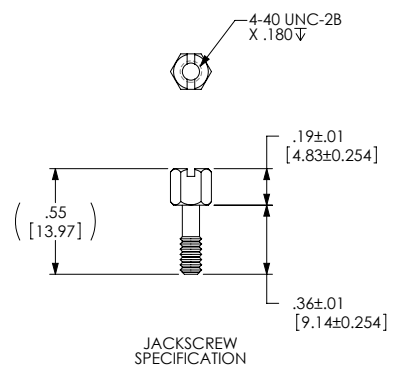


RECOMMENDED PANEL OPENING
(MAX PANEL THICKNESS: 0.06")

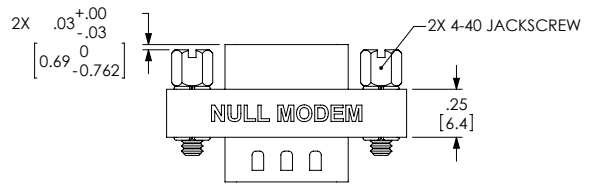
DB9F	DB9M
PIN 1 & 6	PIN 4
PIN 2	PIN 3
PIN 3	PIN 2
PIN 4	PIN 1 & 6
PIN 5	PIN 5
PIN 7	PIN 8
PIN 8	PIN 7
N/C	N/C
SHELL	SHELL



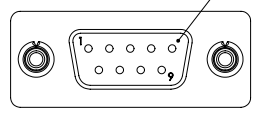
FEMALE, 9 PIN
D-SUB CONNECTOR



JACKSCREW SPECIFICATION



2X 4-40 JACKSCREW



MALE, 9 PIN
D-SUB CONNECTOR

NOTES:

MATERIAL:
SHELL: STEEL
CONTACTS/TERMINALS: COPPER ALLOY
HARDWARE: BRASS
INSULATOR: PBT FIBER REINFORCED (UL94V-0)

FINISH:
SHELL: TIN/NICKEL PLATE
CONTACTS/TERMINALS: GOLD FLASH PLATED: 1-1.5µ INCHES.
HARDWARE: NICKEL PLATED.

LABELING:
PANTONE 2945 BLUE. "L-COM" FONT Myriam ITALIC.
"NULL MODEM" FONT ARIAL BOLD, TEXT HEIGHTS: .085"
TEXT COLOR: WHITE.

ELECTRICAL:
CURRENT RATING: 3 AMP

COMPONENT SHALL BE TESTED FOR CONTINUITY.
COMPONENT SHALL BE INDIVIDUALLY PACKAGED IN A POLY BAG.

UNLESS OTHERWISE SPECIFIED, DIMENSIONS ARE IN INCHES (mm)		APPROVALS	DATE		45 BEECHWOOD DRIVE NORTH ANDOVER, MA 01845
DIMENSIONAL TOLERANCES: .X = ±.1 .XX = ±.01 .XXX = ±.005 ANGULAR TOLERANCES: ALL = ±1°		DRAWN BY E.C.MICROWICK CHECKED BY D.FARRHAM DESIGNED BY E.CARRICK	02/12/2001 02/12/2001 02/12/2001		CATEGORY
PROJECTION		CONFIGURATION DETAILS OF UNDIMENSIONED FEATURES MAY VARY		02/12/2001 02/12/2001	NULL MODEM, DB9 MALE/FEMALE Dwg. No. DMA060MF Rev. C
		COLOR VARIATIONS MAY OCCUR		B 43321 SCALE: 2:1 CAD FILE: DMA060MF.SDDRW	SHEET 1 OF 1