

Free eNewsletter

Enter your E-mail



#### Shop By Type

Cable Assemblies  
Adapters  
Connectors  
Rack Panels  
Bulk Cable  
Tools  
Switch Boxes  
Network Cards  
Hubs & Switches  
Converters & Transceivers  
KVM Switches  
Antennas

Overstock/Sale Items  
Top 10 Products

#### Shop By Category

IEEE-488 GPIB  
Coaxial  
Monitor, Video  
Fiber Optic  
D-Subminiature  
Modular  
USB, DIN, Firewire, SCSI, and Others  
Wireless Infrastructure  
Weatherproof Enclosures  
Networking and Other Equipment

#### Product Wizards

Cable Assemblies  
Adapters  
Connectors  
Rack Panels  
Tools  
Switch Boxes  
Network Cards  
Hubs or Switches  
Ethernet Converters  
KVM Switches

#### Technical Resources

FAQs  
Connector Chart  
Glossary  
Tutorials  
Tips and Videos  
White Papers  
Catalog Downloads  
eNewsletter Archive

You Are Here: [Home](#) > [Modular](#) > [Adapters, Couplers, Splitters](#) > [Modular Couplers](#) > [ECF504-C, SC](#) > **ECF504-SC5E**

## Category 5E Shielded RJ45 (8x8) Deluxe Panel Coupler Kit

L-com's premium line of Modular Couplers combines innovative design with an affordable price. With a solid die-cast metal mounting frame, these unique coupler kits allow panel mounting in virtually any panel thickness. Designed to work with EIA/TIA 568A and B wiring, these couplers offer a reliable method to pass high-speed data communication through a chassis or rack panel. Couplers listed include Category 3, 5E and 6 performance ratings in both Shielded and Unshielded versions. Kits include a snap-in coupler, mounting frame and 4-40 machine screws.



#### Features for this Modular product

- EIA/TIA 568A/B compliant insures compatibility and reliability in your application
- Category 3, 5E and 6 performance ratings facilitate high-speed data communication
- RJ45 Female connectors and straight through wiring for network system compatibility
- Fully stamped shielding (where applicable) offers isolation from EMI/RFI
- Flange kit includes a snap-in coupler, mounting frame and 4-40 machine screws

#### Details for this Modular product

L-com Item #	ECF504-SC5E
Manufacturer	L-com
ASIN # <a href="#">(More)</a>	B000AAL6U8
UPC # <a href="#">(More)</a>	822335022478
RoHS Status	<a href="#">RoHS Compliant</a> <a href="#">(More)</a>



[Tip](#)



[Video Clip](#)



[Catalog Page](#)



[Catalog Page](#)



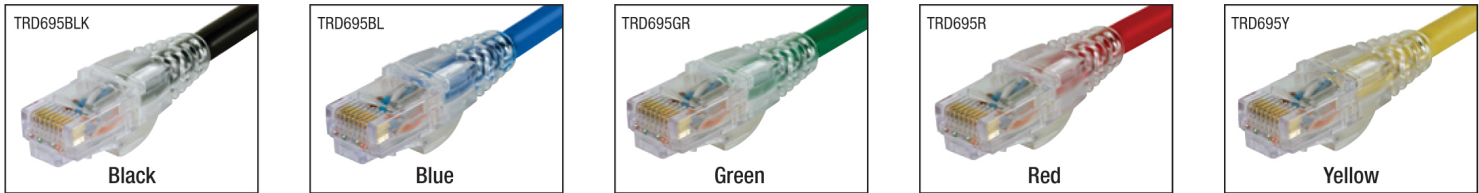
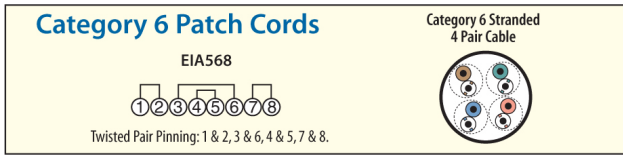
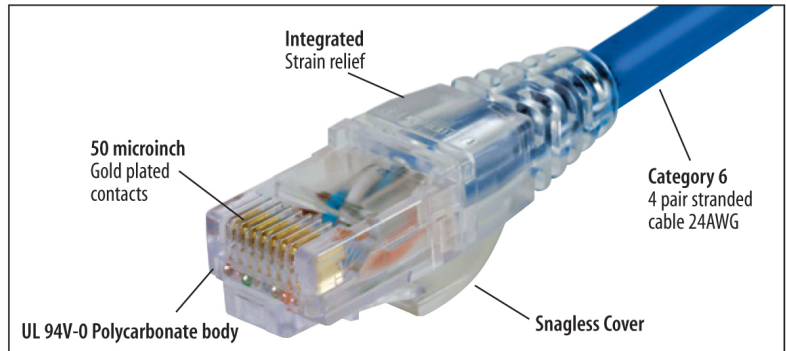
[2D Drawing \(.pdf\)](#)



[3D CAD Model \(.step\)](#)

**RoHS Compliant** Premium Category 6 RJ45 Hi-Speed Network Patch Cables

Realistic pricing and high quality is what makes L-com's Category 6 Patch Cables the right choice. Made with high performance 4-Pair Category 6 cable and Stewart snagless plugs, these cables are ready to be installed in your network. Affordability and peace of mind are assured when choosing L-com's patch cables. Large volume OEM requests are welcomed with this series. Contact us today for all your patch cord needs.



**BLK**                      **BL**                      **GR**                      **R**                      **Y**

Ordering is easy, add the desired color code to the part number. Ex: TRD695BLK-1

Item #	Description	Length	1-9	10-24	25-99	100-249	250-499
TRD695 ___ -1	Category 6 Patch Cable, RJ45 / RJ45	1.0 ft					
TRD695 ___ -3	Category 6 Patch Cable, RJ45 / RJ45	3.0 ft					
TRD695 ___ -5	Category 6 Patch Cable, RJ45 / RJ45	5.0 ft					
TRD695 ___ -7	Category 6 Patch Cable, RJ45 / RJ45	7.0 ft					
TRD695 ___ -10	Category 6 Patch Cable, RJ45 / RJ45	10.0 ft					
TRD695 ___ -14	Category 6 Patch Cable, RJ45 / RJ45	14.0 ft					
TRD695 ___ -25	Category 6 Patch Cable, RJ45 / RJ45	25.0 ft					
TRD695 ___ -50	Category 6 Patch Cable, RJ45 / RJ45	50.0 ft					
TRD695 ___ -75	Category 6 Patch Cable, RJ45 / RJ45	75.0 ft					
TRD695 ___ -100	Category 6 Patch Cable, RJ45 / RJ45	100.0 ft					

Item #	Description	1-9	10-24	25-99	100-249	250-499
--------	-------------	-----	-------	-------	---------	---------

**RoHS Compliant** High Performance Category 6 Staggered Alignment Plugs with Loading Bars

This staggered alignment plug will accommodate typical 24 gauge solid or stranded cable. Fully compatible with Category 6 applications. They are specially designed with a multi-level contact configuration and loading bars for precise control of pairing arrangement. This controls the distance between critical pairs that provide lower levels of crosstalk and higher performance. Sold only in packages of 50 plugs.

[TSP4288C6](#) Modular Plugs, RJ45(8x8) Category 6, Pkg/50



**RoHS Compliant** Premium Panel Mounted Modular Coupler Kits - Shielded and Unshielded Category 6

These unique coupler kits allow panel mounting in virtually any panel thickness. A solid die-cast metal mounting frame provides secure mounting and reliable grounding. Kits include a snap-in coupler, mounting frame and two 4-40 machine screws.

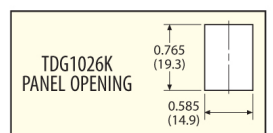
[ECF504-C6](#) Category 6 Unshielded RJ45 (8x8) Deluxe Panel Coupler Kit  
[ECF504-SC6](#) Category 6 Shielded RJ45 (8x8) Deluxe Panel Coupler Kit



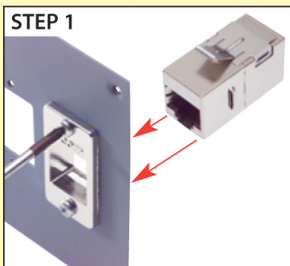
**RoHS Compliant** RJ45 (8x8) Keystone Feed-thru Couplers - Shielded and Unshielded Category 6

These couplers utilize two RJ45 (8x8) modular jacks and fit into a standard Keystone style opening. A slim housing design permits high density mounting. Couplers listed include 6 performance ratings in Shielded and Unshielded versions. Connector housings enclosed within a fully stamped shielding.

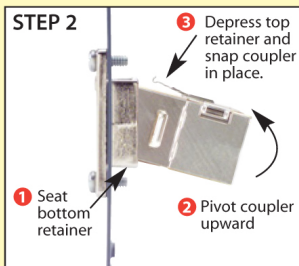
[TDG1026KC6](#) Category 6 Unshielded RJ45 (8x8) Keystone Feed-thru Coupler  
[TDG1026KS-C6](#) Category 6 Shielded RJ45 (8x8) Keystone Feed-thru Coupler



**Tip** How to install a premium ECF Coupler Kit



Secure frame in specified opening with supplied hardware and align coupler in proper orientation to the opening.



Seat bottom retainer and pivot coupler upward while depressing upper retainer.



Coupler fully seated.

Shop at [L-com.com](#) or call **1-800-343-1455**  
 E-mail: [sales@L-com.com](mailto:sales@L-com.com) Fax: 978-689-9484

**How to panel mount a premium ECF coupler kit**  
 See the free video tip and more at [L-com.com/Videos/A09](#)