

## FEED-THROUGH

### 35 or 32mm DIN Rail

Altech "U" Series Universal Rail Mounting Standard Screw Clamp Feed through terminals are the most versatile terminals for wire-to-wire connection in control, automation, instrumentation and power distribution applications. A special design feature on the flexible foot enables easy mounting and dismounting from the DIN Rail with the help of a screwdriver.

**The terminals with AEx eII EEx eII can be used in a potentially explosive atmosphere which may occur in chemical and petrochemical industry. These terminals can be used in Class 1, Zone 0, 1 & 2 hazardous locations. These terminal blocks comply to En 500019.**



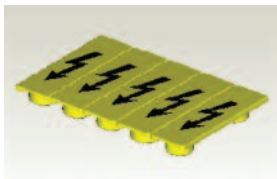
### COLOR BLOCKS

(other than grey standard)

When ordering please add color suffix to Cat. No.

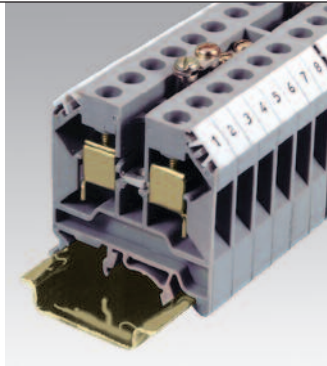
Example: CTS2.5U-N/R

Color	Ordering Suffix
Red	R
Blue	BU
Black	BL
Orange	O
Green	G
Yellow	Y
White	W
Beige	BG
Dark Brown	DB



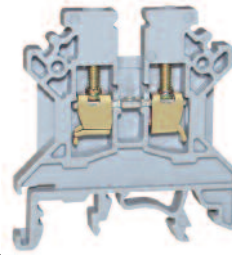
Warning labels available. See page 67.

\* 35A with one No. 10 AWG and 40A with two No. 12 AWG wires.

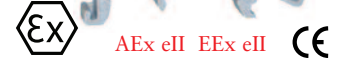
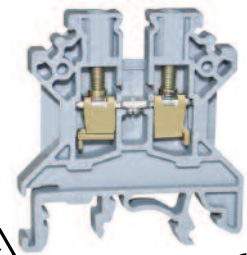


Terminal Width	5 mm
Height x Length	45 x 43 mm
Stripping Length	9 mm
Insulation Material	Polyamide 6.6
Type of Connection	2 screw clamps & 1 tapped hole for cross connection
Approvals	
Wire Range	22-12 AWG 0.5-2.5 sq.mm 22-14 AWG
Voltage Rating	600 V 750 V 600 V
Current Rating	25 A 24 A 20 A
Torque	7 lb-in 0.4 Nm 7 lb-in

### CTS2.5U-N



### CTS4U-N



		Cat. No.	Std. Pk.	Cat. No.	Std. Pk.	
Terminal Block		CTS2.5U-N	100	CTS4U-N	100	
End Plate		EP2.5/4UN	50	EP2.5/4UN	50	
Isolation Partition		PP2.5/4UN	50	PP2.5/4UN	50	
Separator Plate		SP2.5/4UN	100	SP2.5/4UN	100	
DIN Rail						
for ordering information refer to page 62						
End Stop		CA702 CA802	50 50	CA702 CA802	50 50	
for ordering information refer to page 63						
Internal Jumper		2 pole	CA721/2	100	CA722/2	100
		3 pole	CA721/3	50	CA722/3	50
		4 pole	CA721/4	50	CA722/4	50
		10 pole	CA721/10	10	CA722/10	10
		100 pole	CA721/100	10	CA722/100	10
Insulated Internal Jumper		2 pole	CA741/2	100	CA742/2	100
		3 pole	CA741/3	50	CA742/3	50
		4 pole	CA741/4	50	CA742/4	50
		10 pole	CA741/10	10	CA742/10	10
		100 pole	CA741/100	10	CA742/100	10
Current Bars		2 pole	CA703/01	100	CA703/1	100
		3 pole	CA704/01	100	CA704/1	100
		4 pole	CA705/01	100	CA705/1	100
		10 pole	CA731/10	100	CA732/10	100
		10 pole (breakable)	—	—	CA732/10-A	100
		100 pole	CA731/100	10	CA732/100	10
		Shorting Sleeve & Screw		CA 707/S/Q/01	100	CA707/S/Q/01
External Jumper		2 pole	CA717/2	100	CA713/2	100
		3 pole	CA717/3	100	CA713/3	100
		4 pole	CA717/4	100	CA713/4	50
		10 pole	CA717/10	25	CA713/10	25
		Marking Tags		MT5	100	MT6
Warning Label						